

P. 267

PLAN OF SURVEY

Situate in the
LAND DISTRICT OF DORSET
PARISH OF LISLE

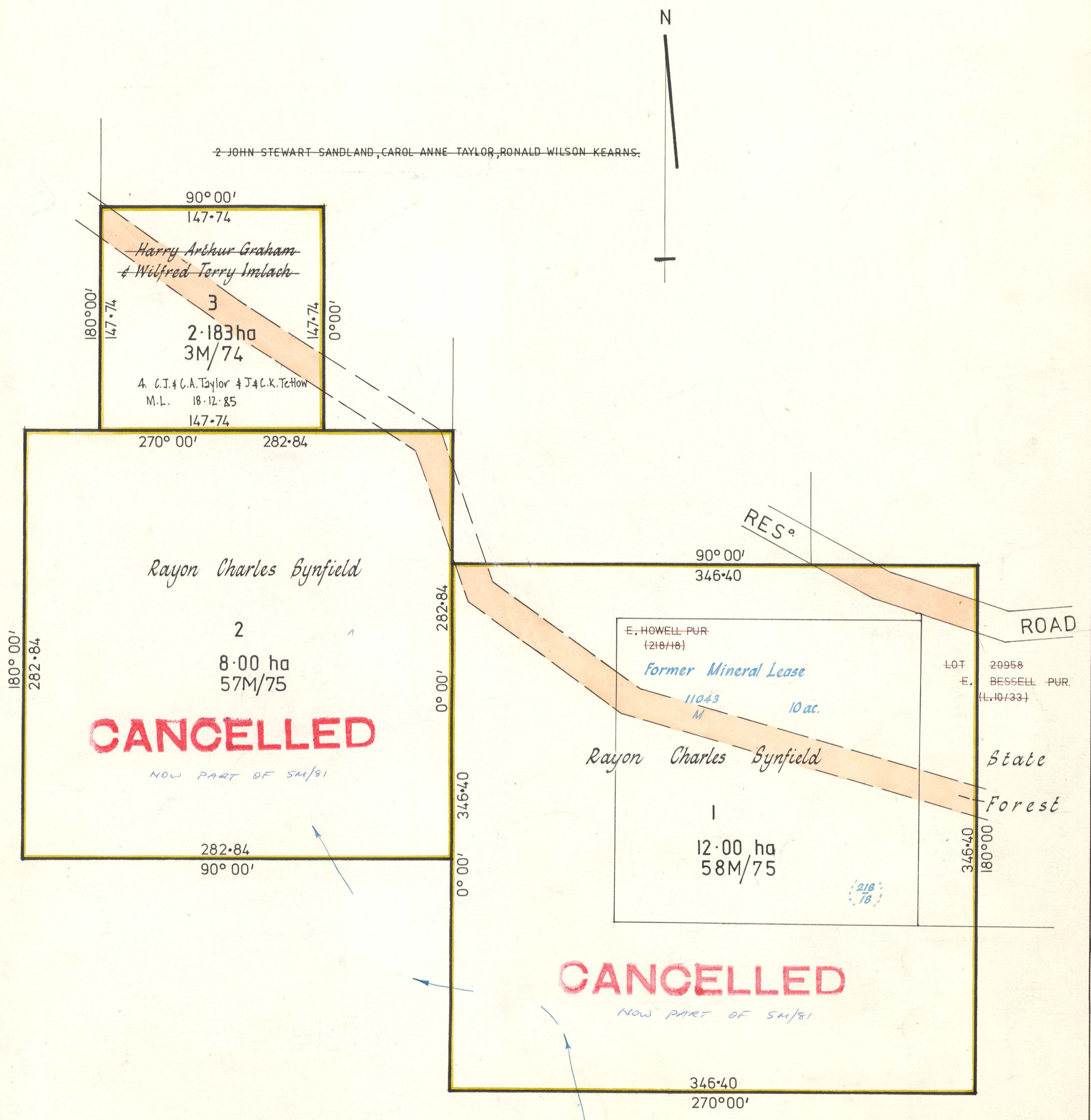
Municipality LILYDALE

PLAN OF MINERAL SURVEY

Registered Surveyor G.J.WALKEM
Scale 1:2000
Map Ref: LISLE & GOLCONDA
MT. ARTHUR 1:20,000

Registered Number
P. 267
5 cm

~~2 JOHN STEWART SANDLAND, CAROL ANNE TAYLOR, RONALD WILSON KEARNS.~~



Finally Examined... 15.9.76.
May be acted upon
Acted upon
Approved
Director of Mines

APPROVED
[Signature]
DIRECTOR OF MINES

21 AUG 1977

