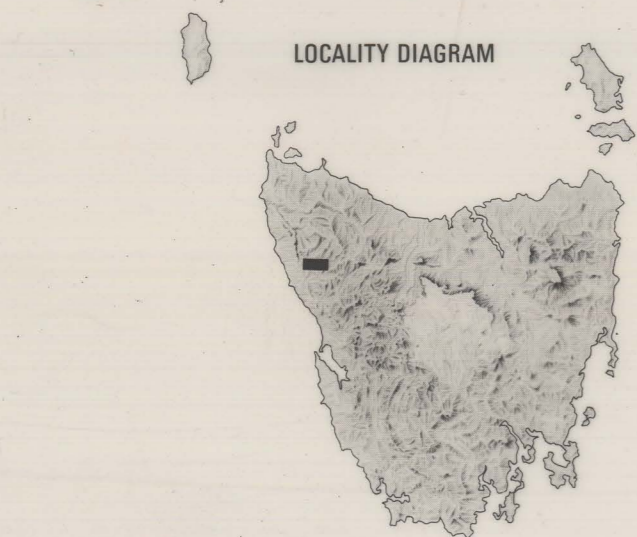
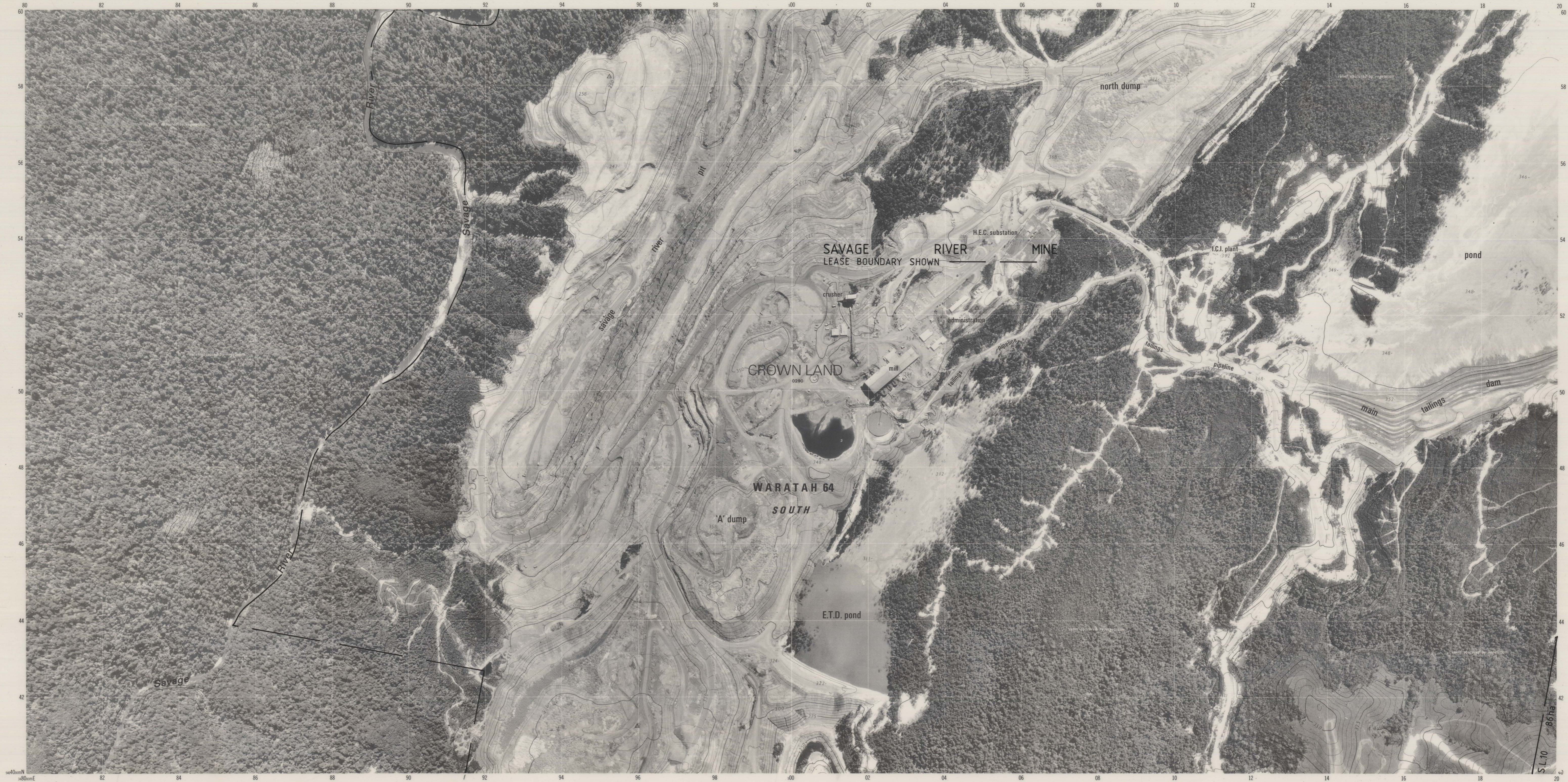


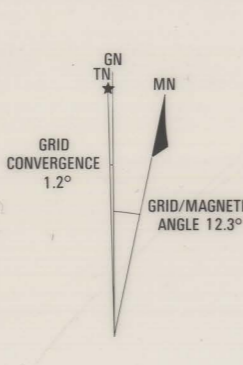
ORTHOPHOTO MAP 1:5 000

SAVAGE RIVER 33

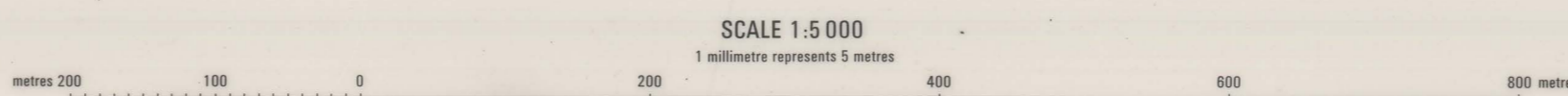
SHEET 3440-33



PRODUCTION: Mapping Division, Lands Department, Hobart, 1981.
PHOTOGRAPHY: Wide angle flown 0130 hours UT, 19th February, 1981.
RELIABILITY: Orthophotos produced on Wild PERS/GRI equipment to meet National Mapping Council standards of map accuracy: horizontally 95% of detail within 2.5 metres of true position and vertically within 2.5 metres except in areas where relief is obscured by dense vegetation.
NOMENCLATURE: has been produced mainly from records of the Nomenclature Board of Tasmania, but not all have necessarily been approved.
CORRECTIONS: To assist in correcting future editions of this map, users noting errors or omissions are invited to write to the Director of Mapping, G.P.O. Box 444, Hobart, Tasmania, 7001.
AMENDMENTS: to boundaries and names are carried out at regular intervals. Date of latest amendments to this copy was March, 1981.
UNIQUE PARCEL IDENTIFIER: To give a land parcel reference, prefix the parcel number with the municipality number.



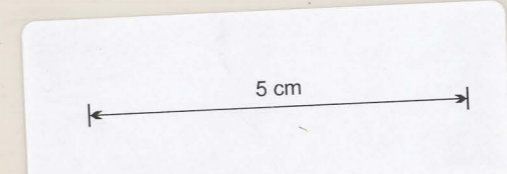
HORIZONTAL DATUM: Australian Geosidetic Datum 1986.
VERTICAL DATUM: Tasmanian Mean Sea Level.
PROJECTION: Universal Transverse Mercator on Australian National Spheroid.
MAGNETIC VARIATION: True Grid and Magnetic North are shown diagrammatically for the centre of this map. Magnetic North is correct for 1981 and moves easterly about 0.1° every three years.
BOUNDARIES: of land parcels are NOT authoritative. Compilation is from surveys as at March, 1981. Some ROADS implied by name and/or boundary are not part of the PUBLIC road network and access may be restricted or impossible. Some implied roads have been formed or leased (e.g. for grazing) and entry over them may constitute TRESPASS. Most roads and tracks appearing on the orthophoto imagery without names or boundaries are PRIVATE. Full particulars concerning boundaries or roads are available from the Registrar-General's Department or Lands Department.



SCALE 1:5 000
1 millimetre represents 5 metres

CONTOUR INTERVAL 5 METRES

Municipality name	e.g. PORTLAND	mn
Municipality number	e.g. 58	▲
Municipality boundary		—
Ward name	e.g. RAILTON	—
Ward boundary		—
Proclaimed town boundary		—
Crown reserve boundary		—
Undefined boundary		—
Land parcel boundary and number	sect. / 0088	PS
Spot elevation	562	▲



UNIVERSAL GRID REFERENCE

GRID ZONE DESIGNATION	55G
100 000 METRE SQUARE IDENTIFICATION	CO
To give a standard reference to the nearest 10 metres	
1 State name and number of this map:	
1	74
2 Locate first VERTICAL grid line to the left of point and read large figures only in either the top or bottom margin e.g.	
Estimate twentieths from grid line to point: e.g.	10
3 Locate first HORIZONTAL grid line below the point and read large figures only in either the left or right margin e.g.	
Estimate twentieths from grid line to point: e.g.	46
753482	
To give full grid reference, prefix with Grid Zone Designation and 100 000 metre Square Identification letters: e.g. 55GCO753482	

INDEX TO ADJOINING MAPS

SAVAGE RIVER 22	SAVAGE RIVER 23	SAVAGE RIVER 24
SAVAGE RIVER 32	SAVAGE RIVER 33	SAVAGE RIVER 34
SAVAGE RIVER 42	SAVAGE RIVER 43	SAVAGE RIVER 44