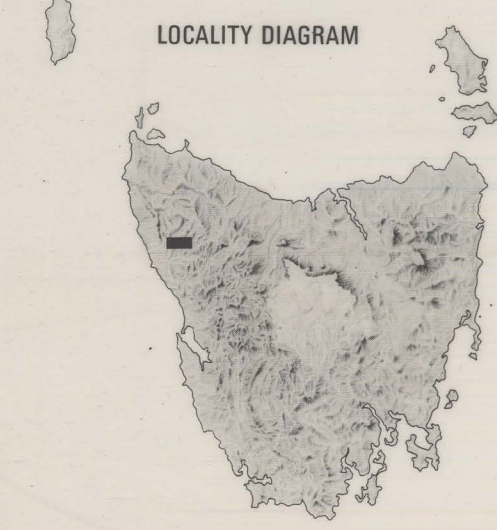
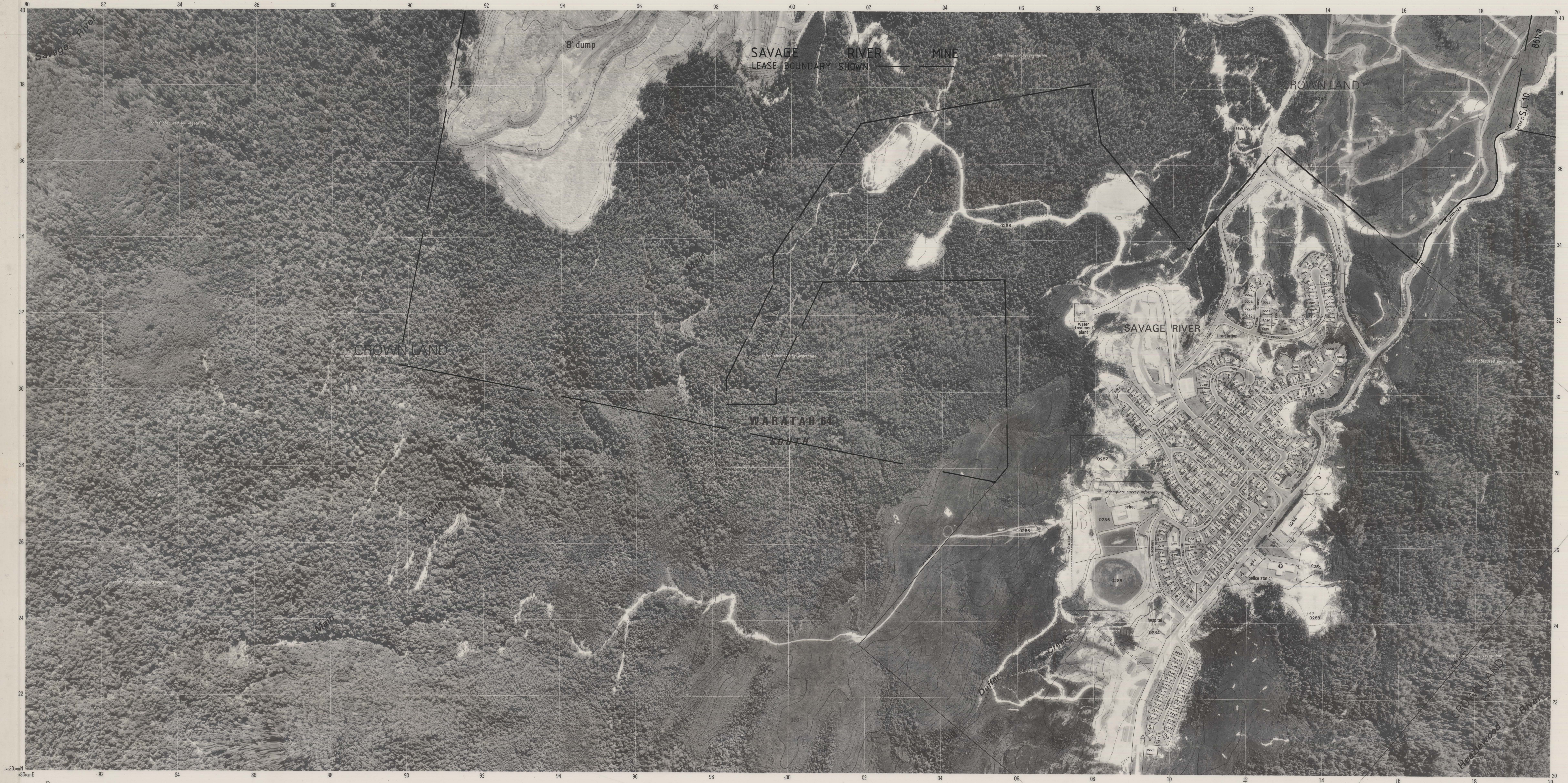


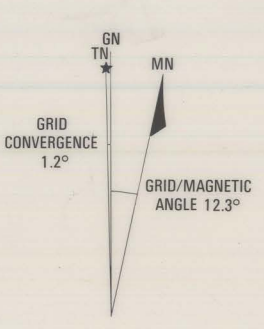
ORTHOPHOTO MAP 1:5 000

SAVAGE RIVER 43

SHEET 3440-43



PRODUCTION: Mapping Division, Lands Department, Hobart, 1981.
PHOTOGRAPHY: Wide angle from 0130 hours UT, 18th February 1981.
RELIABILITY: Orthophoto produced on WIM PEBS/QR1 equipment to meet National Mapping Council standards of map accuracy, horizontally 90% of detail within 2.5 metres of true position and vertically within 2.5 metres except in areas where relief is obscured by dense vegetation.
NOMENCLATURE: has been produced mainly from records of the Nomenclature Board of Tasmania, but not all have necessarily been approved.
CORRECTIONS: To assist in correcting future editions of this map, users noting errors or omissions are invited to write to the Director of Mapping, G.P.O. Box 44A, Hobart, Tasmania, 7001.
AMENDMENTS: to boundaries and names are carried out at regular intervals. Date of latest amendments to this copy was March, 1981.
UNIQUE PARCEL IDENTIFIER: To give a land parcel reference, prefix the parcel number with the municipality number.

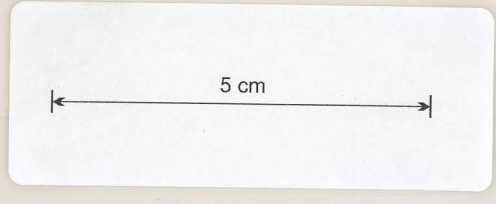


HORIZONTAL DATUM: Australian Geoidetic Datum 1966.
VERTICAL DATUM: Tasmanian Meansea, Australian Height Datum (Tas).
OFFSHORE ISLANDS: Mean Sea Level.
GRID: 200 metre intervals on Australian Map Grid, Zone 55.
PROJECTION: Universal Transverse Mercator on Australian National Spheroid.
MAGNETIC VARIATION: True, Grid and Magnetic North are shown diagrammatically for the centre of this map. Magnetic North is correct for 1981 and moves easterly about 0.1° every three years.
BOUNDARIES: of land parcels are NOT authoritative. Completion is from surveys as at March, 1981. Some ROADS implied by name and/or boundary are not part of the PUBLIC road networks and access may be restricted or impossible.
Some implied roads have been licensed or leased (e.g. for grazing) and entry over them may constitute TRESPASS. Most roads and tracks appearing on the orthophoto imagery without names or boundaries are PRIVATE. Full particulars concerning boundaries or roads are available from the Registrar-Generals Department or Lands Department.

Municipality name	e.g. PORTLAND	58
Municipality number	e.g. RAILTON	58
Ward name		
Proposed town boundary		
Crown reserve boundary		
Undefined boundary		
Land parcel boundary and number	e.g. / 0080	
Spot elevation	e.g. -862	



- CONTOUR INTERVAL 5 METRES
- Caravan park
 - Camping ground
 - Picnic area
 - Public toilet
 - Rubbish disposal area
 - Beach
 - Post office
 - Fire station
 - Police station
 - Trigonometric station with beacon



UNIVERSAL GRID REFERENCE

GRID ZONE DESIGNATION	55G	
100 000 METRE SQUARE IDENTIFICATION	CO	
To give a standard reference to the nearest 10 metres		
1. State name and number of this map:		
Large figures only in either the top or bottom margin e.g.	43	
Estimate tenths from grid line to point e.g.	13	
2. Locate first VERTICAL grid line to the left of the point and read large figures only in either the top or bottom margin e.g.		74
Estimate tenths from grid line to point e.g.	46	
3. Locate first HORIZONTAL grid line below the point and read large figures only in either the left or right margin e.g.		46
Estimate tenths from grid line to point e.g.	74	
To give full grid reference, prefix with Grid Zone Designation and 100 000 metre Square Identification letters e.g.		55GCO753462

INDEX TO ADJOINING MAPS

SAVAGE RIVER 32	SAVAGE RIVER 33	SAVAGE RIVER 34
SAVAGE RIVER 42	SAVAGE RIVER 43	SAVAGE RIVER 44
SAVAGE RIVER 52	SAVAGE RIVER 53	SAVAGE RIVER 54