

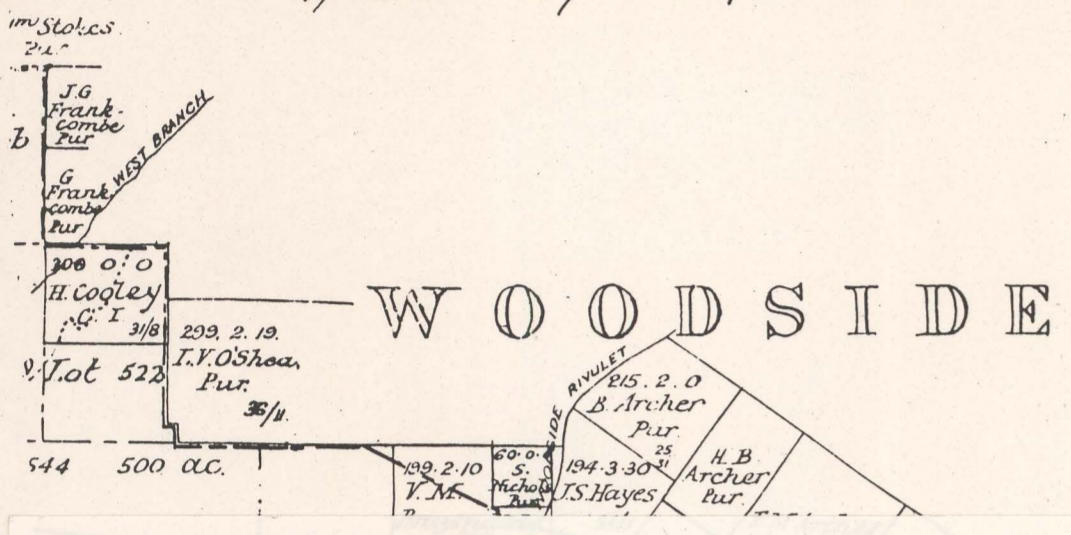




- = CONNORVILLE STATION PTY LTD  
9073 acres - see APPOINTMENT OF NEW TRUSTEE - 39/8140.
- = CONNORVILLE ESTATES PTY LTD  
CONVEYANCE NO. 16/3916 = 27470 acres  
LESS 15.87 ha conveyed to Connorsville CC Estates by No. 45/2666.
- = CONNORVILLE ESTATES P/L  
961 acres of C/T CXXXIX/189  
1686 acres
- = CONNORVILLE ESTATES P/L  
1971-1991 C/T 6/2/20
- = CONNORVILLE ESTATES PTY LTD  
P/GAANT - CC11/71 = 3891.21434

CONNORVILLE ESTATES P/L  
14/1/1928  
447/46  
17/2/24/16/1972  
3/23/25/28/1972  
CONNORVILLE ESTATES P/L  
3661 + 34310 - C/T 2287/51  
199 + 34150 - C/T 2287/51  
977 + 1800 - C/T 2346/19

RENEWED UNTIL 6<sup>th</sup> APRIL 1983



**DOUGLAS & COLLINS**  
BARRISTERS & SOLICITORS

JOHN LORD, LL.B.  
ANTHONY FRANCIS CURVEN MATSON, LL.B.  
JOHN THEODORE SCOTT, LL.B.  
EWAN CHARLES CRAWFORD, LL.B.  
RANDALL LUDLOW AREKLAND, LL.B.

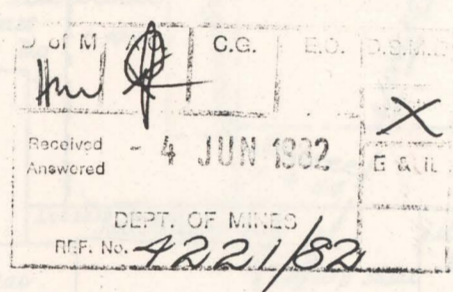
ASSOCIATE  
WARWICK L. SMITH, LL.B.

YOUR REF. 423/2  
IN REPLY PLEASE  
QUOTE OUR REF. MKP:JTS

TELEPHONE 31 5988  
(7 LINES)  
P.O. Box 994  
DX 70102 LAUNCESTON  
HAVELOCK CHAMBERS  
9-13 GEORGE STREET,  
LAUNCESTON,  
TASMANIA. 7250

3 June 1982

The Director of Mines  
Department of Mines  
G P O Box 124 B  
HOBART 7001



Dear Sir

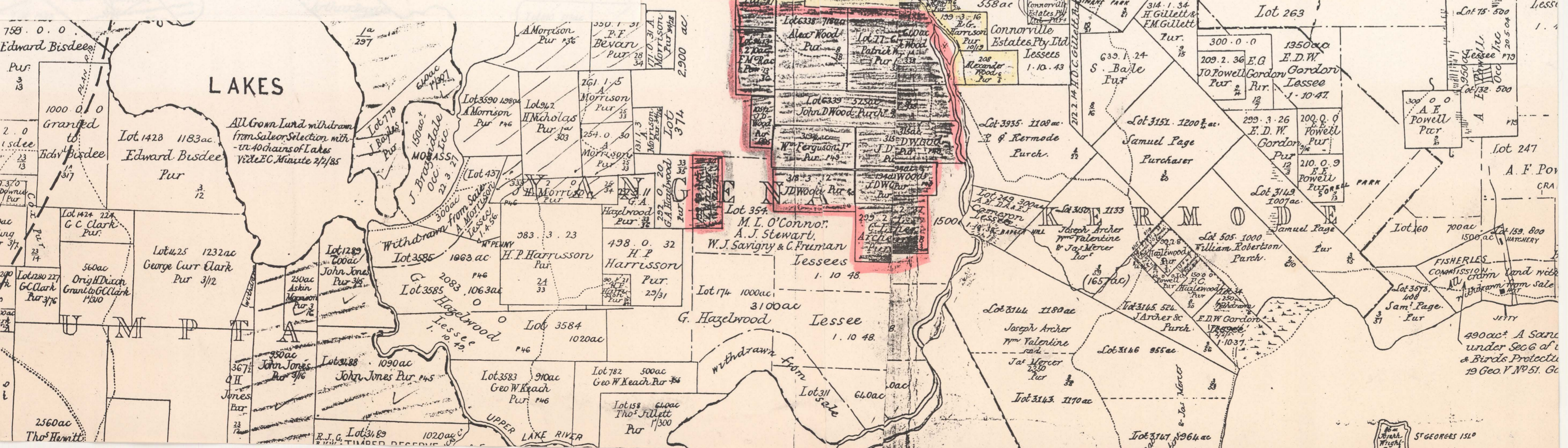
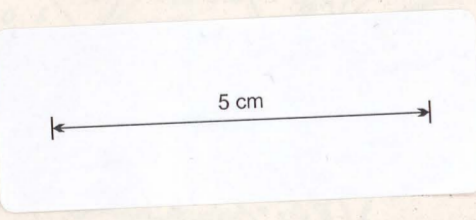
RE MINING ACT, 1929, AND REGULATIONS  
RE CONNORVILLE STATION PTY LTD;  
CONNORVILLE ESTATES PTY LTD  
CONNORVILLE PTY LTD

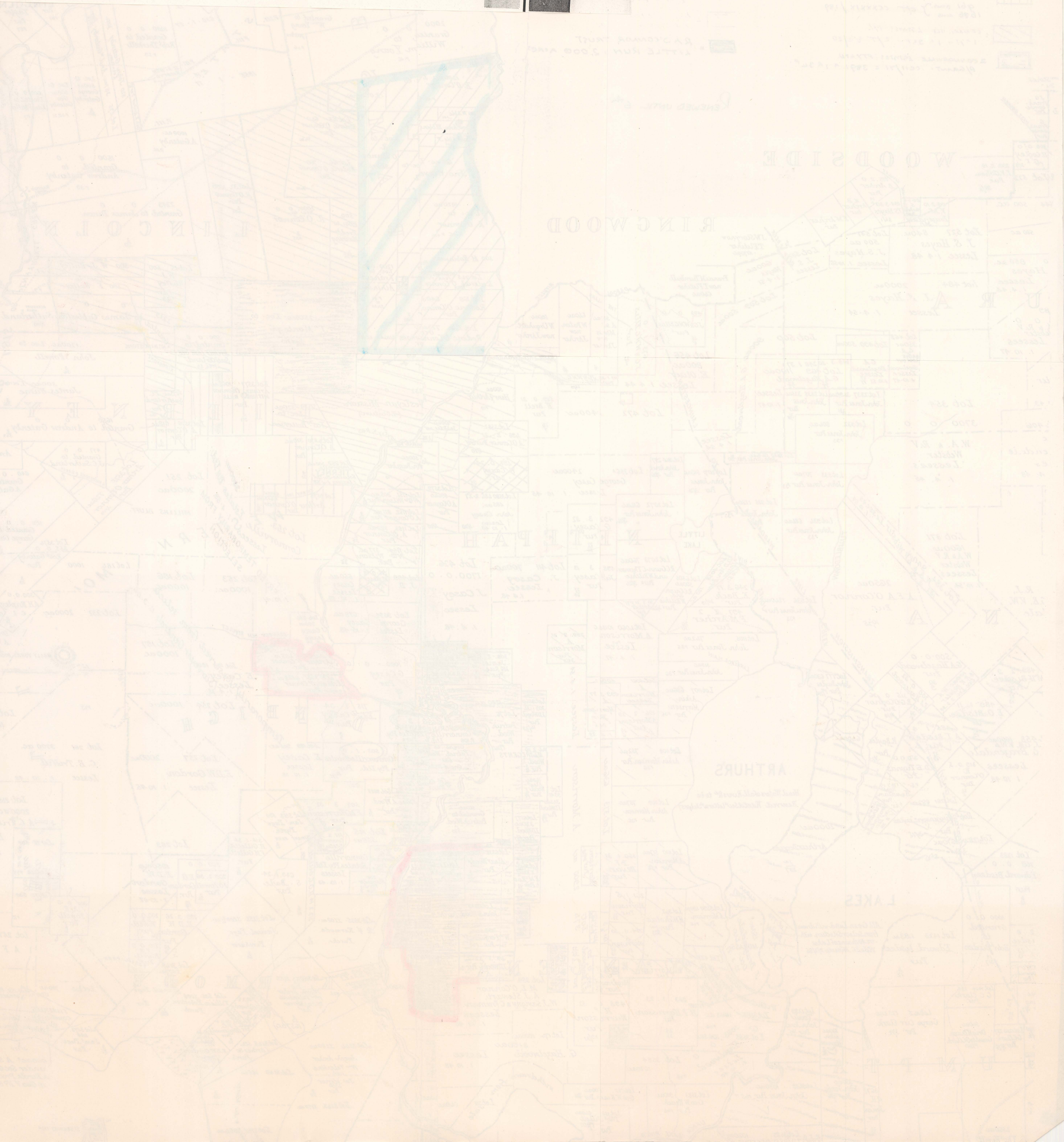
In reply to your letter of the 31st ult.  
we enclose herewith an up to date map  
including title references, as we  
presume this will be of more help than  
copies of separate titles.

Yours faithfully  
DOUGLAS & COLLINS

Per M K PAGE

enclosure





WOODSIDE

RINGWOOD

LINCOLN

LAKES

ARTHURS

THE PAH

MOI