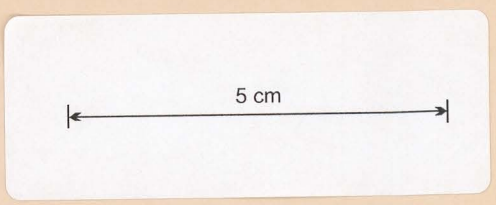


# LAKE CHISHOLM FOREST RESERVE LAND DISTRICT OF RUSSELL

SCALE 1:2 500



E.L. 1/77 CRA.

P.344/11

LAKE CHISHOLM FOREST RESERVE  
LAND DISTRICT OF RUSSELL  
SCALE 1:2500



P.344/11

Extract from 'Tasmanian Government Gazette',  
Wednesday 17 February 1988 page 172

<b>MINES</b>	
File Ref. <b>1/18</b>	
<b>-3 MAR 1988</b>	
Doc. Ref.	
Action Officer	Initials
<b>AR</b>	<i>[Signature]</i>
<b>MDD</b>	<i>[Signature]</i>
<b>GAT</b>	
<b>REG</b>	
Resubmit to	Date

**THE FORESTRY ACT 1920**  
**A NOTIFICATION**

PURSUANT to section 20 of the Forestry Act 1920, the Forestry Commission does, by this Notification rescind the Notification dated the twenty-first day of September 1978, and gazetted on the twenty-seventh day of September 1978, which set apart an area of 190 hectares or thereabouts of State forest in the Land District of Russell, vicinity of Lake Chisholm as a Forest Reserve, and in its place do hereby set apart all that area of State forest situate in the Land District of Russell, vicinity of Lake Chisholm and more particularly described in the Schedule hereto to be a Forest Reserve from the day following the date of publication hereof.

Given under my hand this seventh day of December 1987.

A. G. SKUJA Chief Commissioner for Forests.

*Schedule*

**LAKE CHISHOLM FOREST RESERVE**

LAND DISTRICT OF RUSSELL

Vicinity of Lake Chisholm

All that area of land containing 181 hectares or thereabouts as the same is shown hatched and surrounded by a heavy blackline on Plan 935 filed and registered in the office of the Chief Commissioner for Forests at Hobart.

Municipality—Circular Head

Ward—Marrawah

Locality—Lake Chisholm, vicinity of Arthur and Rapid Rivers.

THE FORESTRY ACT 1920

A NOTIFICATION

PURSUANT to section 20 of the Forestry Act 1920, the Forestry Commission does, by this Notification rescind the Notification dated the twenty-first day of September 1978, and gazetted on the twenty-seventh day of September 1978, which set apart an area of 190 hectares or thereabouts of State forest in the Land District of Russell, vicinity of Lake Chisholm as a Forest Reserve, and in its place do hereby set apart all that area of State forest situate in the Land District of Russell, vicinity of Lake Chisholm and more particularly described in the Schedule hereto to be a Forest Reserve from the day following the date of publication hereof.

Given under my hand this seventh day of December 1987.

A. G. SKUJA Chief Commissioner for Forests.

*Schedule*

LAKE CHISHOLM FOREST RESERVE

LAND DISTRICT OF RUSSELL

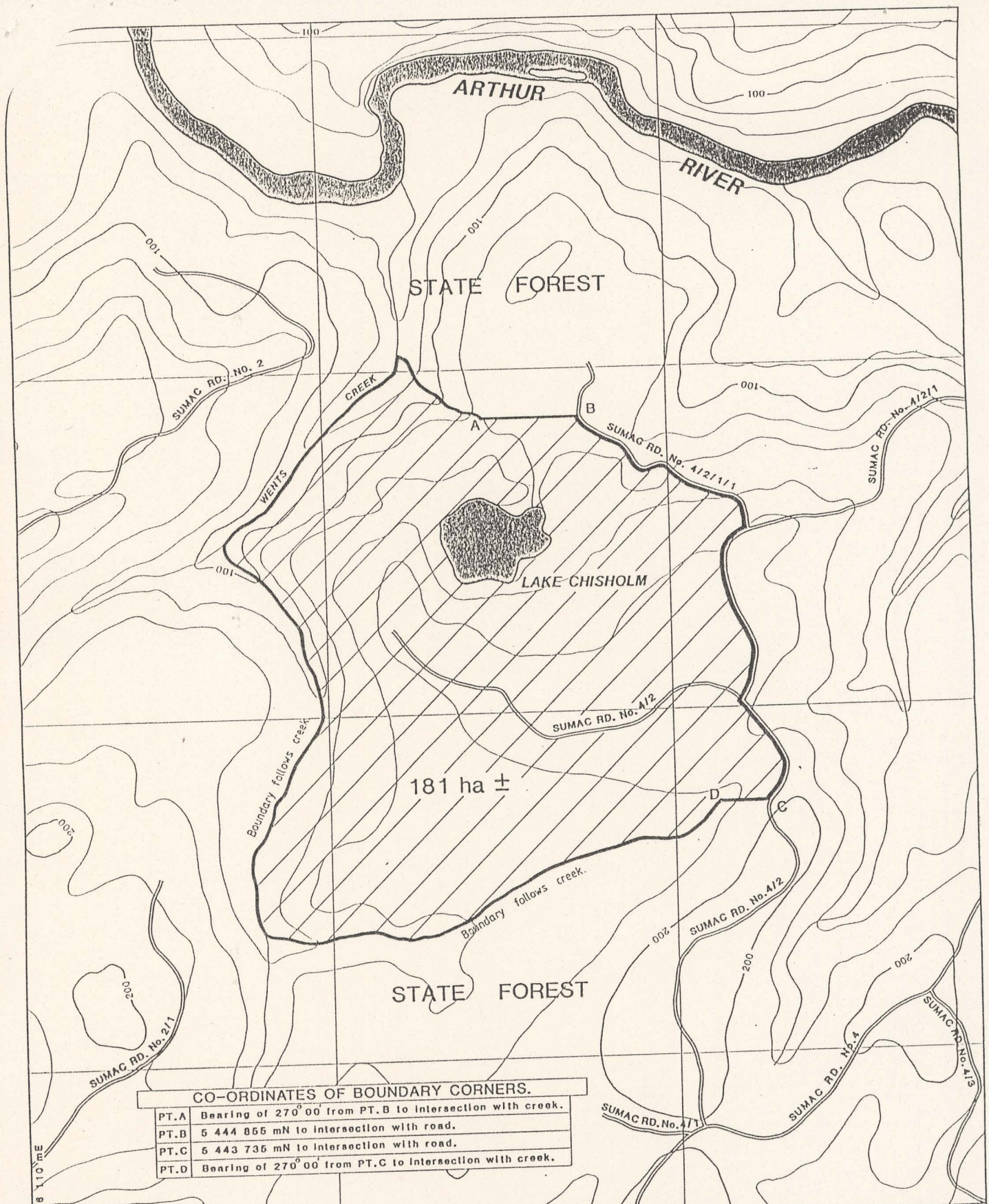
Vicinity of Lake Chisholm

All that area of land containing 181 hectares or thereabouts as the same is shown hatched and surrounded by a heavy blackline on Plan 935 filed and registered in the office of the Chief Commissioner for Forests at Hobart.

Municipality—Circular Head

Ward—Marawah

Locality—Lake Chisholm, vicinity of Arthur and Rapid Rivers.



CO-ORDINATES OF BOUNDARY CORNERS.	
PT.A	Bearing of 270° 00' from PT.B to intersection with creek.
PT.B	5 444 855 mN to intersection with road.
PT.C	5 443 736 mN to intersection with road.
PT.D	Bearing of 270° 00' from PT.C to intersection with creek.

398 110' E  
5 442 640 mN

SCALE	1:10000
CONTOUR INTERVAL	20 METRES
REFERENCE	1 52780
GAZETAL DATE	
MICROFILM NUMBER	
REGISTRAR	
DATE	



FORESTRY COMMISSION TASMANIA		REGISTERED PLAN NUMBER
<b>LAKE CHISHOLM FOREST RESERVE</b>		<b>935</b>
LAND DISTRICT OF RUSSELL		