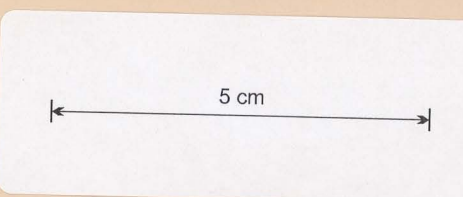


# MT. MAURICE FOREST RESERVE

LAND DISTRICT : DORSET

SCALE 1 : 50 000



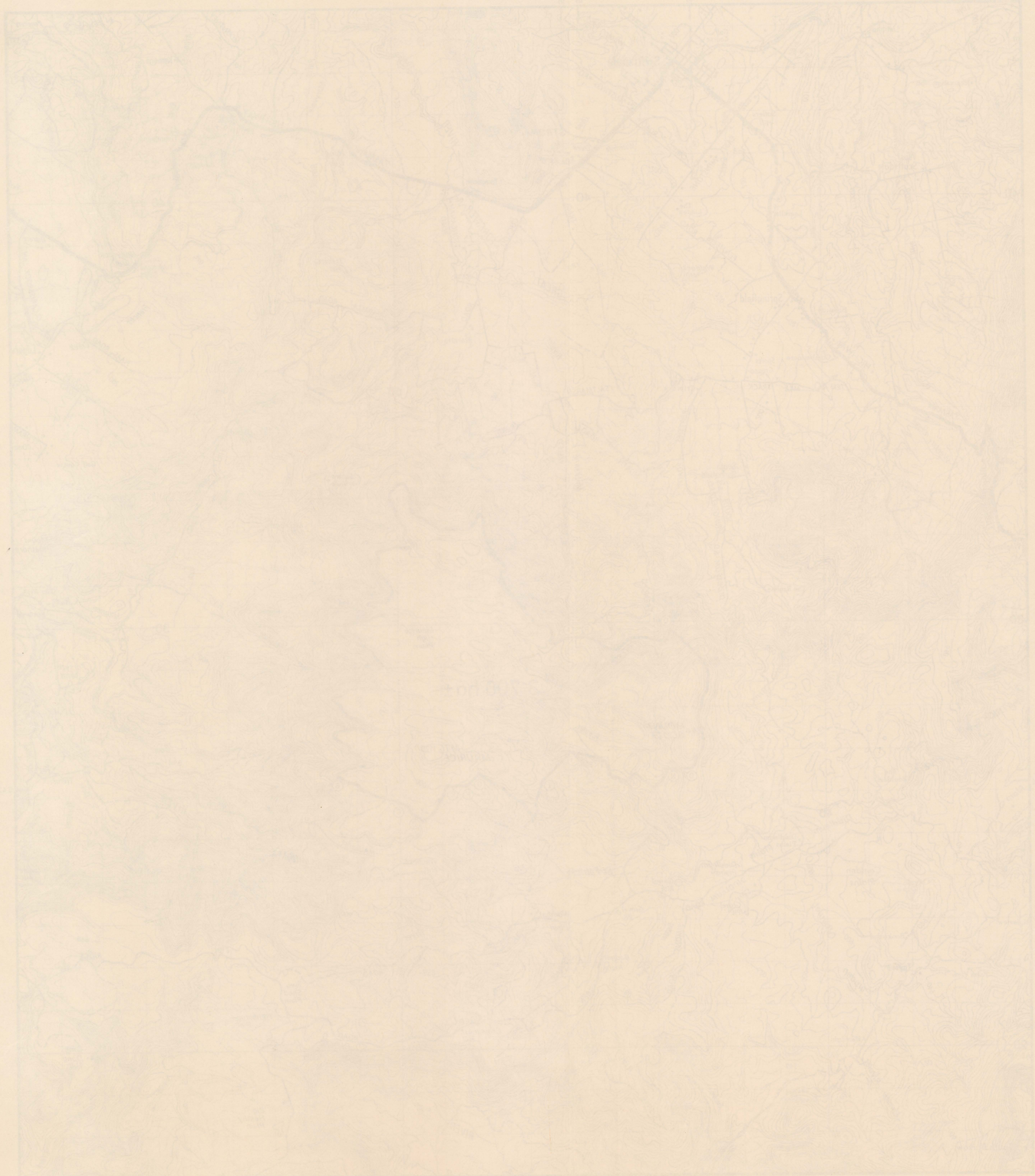
### DESCRIPTION OF BOUNDARIES

Commencing at A, being a point of intersection of the 880 metre contour line and east co-ordinate line 546000mE, approximately four kilometres north-west from the summit of Mt. Maurice.

- A-B Following the 880 metre contour line to a tributary of Dunn's Creek.
- B-C Part of a tributary of Dunn's Creek and a gully to the top of a saddle.
- C-D Down a tributary of Ringarooma River to its intersection with another branch.
- D-E Following that branch to north co-ordinate 5426200mN.
- E-F By a line in a westerly direction to a tributary of St. Patrick's River.
- F-G By a right line, north-westerly to another tributary of St. Patrick's River.
- G-H Down that tributary to the intersection of a further tributary of St. Patrick's River.
- H-I From that intersection, upstream and continuing up the gully then onto a ridge.
- I-J By north-westerly right line to east co-ordinate 546000mE.
- J-K By a right line bearing approximately west-south-westerly to a point on a logging track.
- K-L By that track, south-westward for a distance of about one kilometre to a point above a gully.
- L-M By that gully north-westward to a tributary of the Valentine Rivulet
- M-N South-westward by that tributary and north-westward by another to a point of north co-ordinate 5426500mN.
- N-O By a right line due westward to the 860 metre contour.
- O-P By that contour, generally northward for a distance of approximately 2.5 kilometres to a point of east co-ordinate 543000mE.
- P-Q By a right line north-eastward to Great Forester River.
- Q-R Upstream by that river and a tributary to a point of east co-ordinate 545600mE.
- R-A By a right line to the point of commencement.

The same as is more particularly described on the diagram on this map.





MT. MAURICE  
FOREST RESERVE

LAND DISTRICT BORSET

SCALE 1:50 000

**DESCRIPTION OF BOUNDARIES**

Commencing at a point on the boundary of the 100  
acre section line and west-south-west line 1000  
approximately four kilometers north-west from the centre of  
Mt. Maurice.

A-B Following the 100 acre section line for a distance of  
four miles.

B-C Part of a ridge of Mt. Maurice and a ridge to the  
top of a ridge.

C-D Down a ridge of Mt. Maurice to the top  
of a ridge.

D-E Following the ridge for a distance of 1.5 miles.

E-F In a line to a westerly direction for a distance of  
1.5 miles.

F-G In a line to a westerly direction for a distance of  
1.5 miles.

G-H From that point to the intersection of a further  
distance of 1.5 miles.

H-I From that intersection, westerly and continuing to  
the ridge line for a distance of 1.5 miles.

I-J In a line to a westerly direction for a distance of  
1.5 miles.

J-K In a line to a westerly direction for a distance of  
1.5 miles.

K-L In a line to a westerly direction for a distance of  
1.5 miles.

L-M In a line to a westerly direction for a distance of  
1.5 miles.

M-N In a line to a westerly direction for a distance of  
1.5 miles.

N-O In a line to a westerly direction for a distance of  
1.5 miles.

O-P In a line to a westerly direction for a distance of  
1.5 miles.

P-Q In a line to a westerly direction for a distance of  
1.5 miles.

Q-R In a line to a westerly direction for a distance of  
1.5 miles.

R-S In a line to a westerly direction for a distance of  
1.5 miles.

S-T In a line to a westerly direction for a distance of  
1.5 miles.

T-U In a line to a westerly direction for a distance of  
1.5 miles.

U-V In a line to a westerly direction for a distance of  
1.5 miles.

V-W In a line to a westerly direction for a distance of  
1.5 miles.

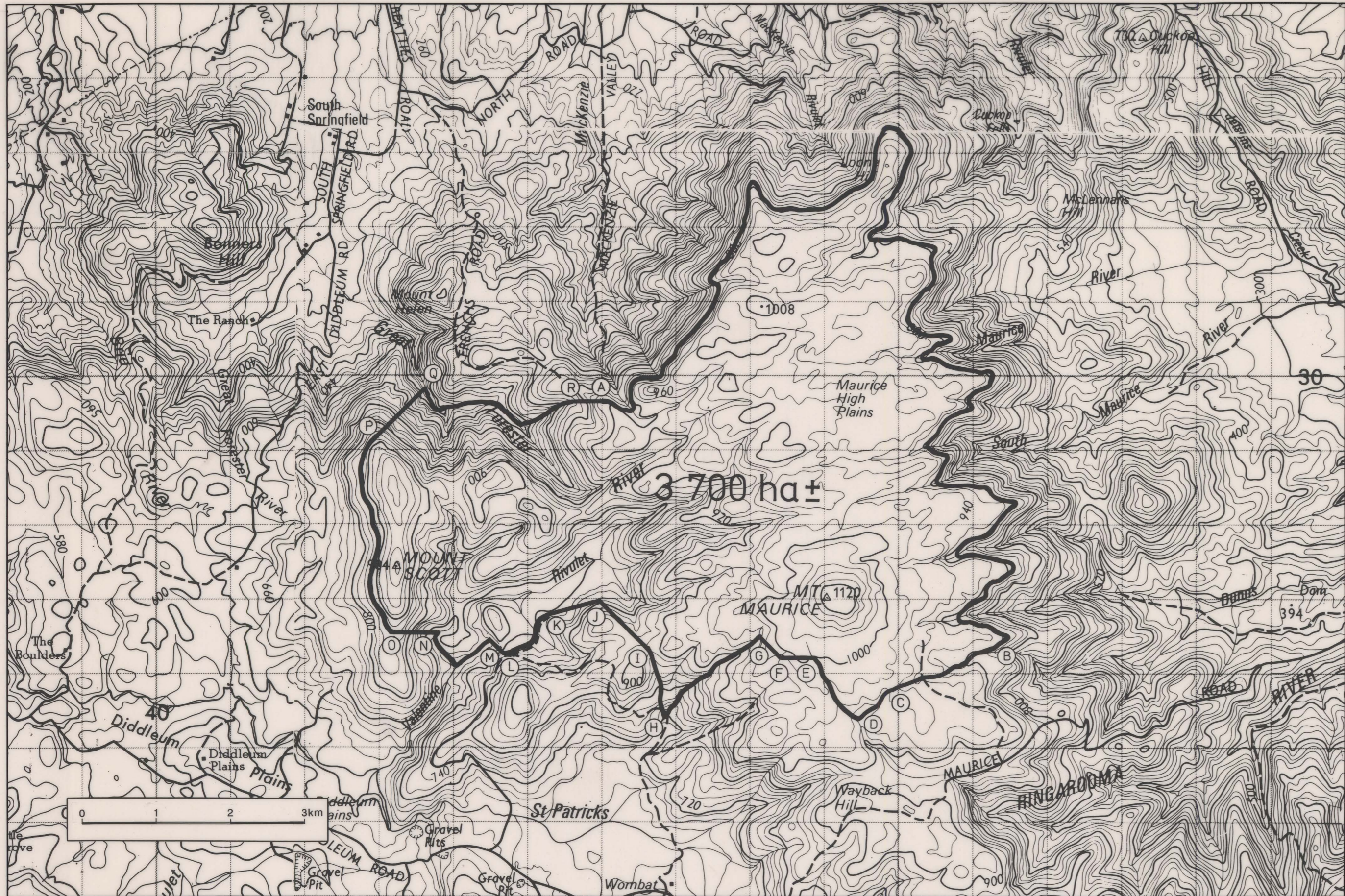
W-X In a line to a westerly direction for a distance of  
1.5 miles.

X-Y In a line to a westerly direction for a distance of  
1.5 miles.

Y-Z In a line to a westerly direction for a distance of  
1.5 miles.

Z-A In a line to a westerly direction for a distance of  
1.5 miles.

5 cm



BROUGHT WITHIN THE PROVISIONS OF THE MINING ACT 1929  
 DEPARTMENT OF RESOURCES AND ENERGY.  
 DIVISION OF MINES AND MINERAL RESOURCES.

**MT. MAURICE FOREST RESERVE**  
 LAND DISTRICT OF DORSET  
 Scale 1 : 50000

P 344/14

11363  
 1.4.90