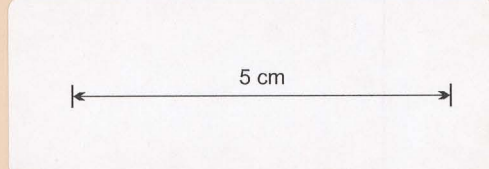


MERSEY RIVER FOREST RESERVE

LAND DISTRICTS WESTMORLAND & LINCOLN



239 ha±

1: 20 000
METRES 0 200 400 600 800 1000 1200 1400 1600 1800 2000 METRES

DESCRIPTION

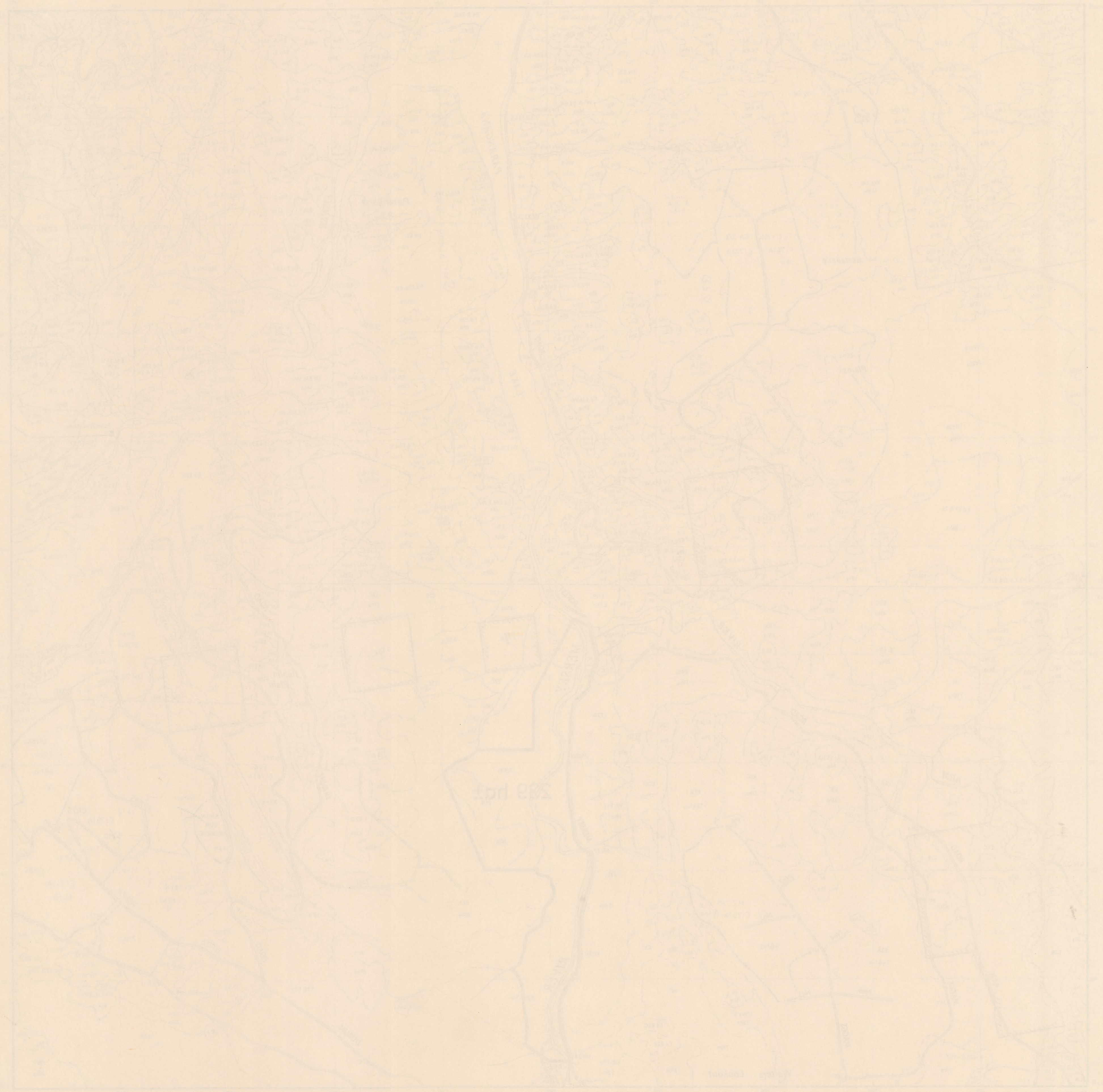
Commencing at the confluence of the Arm and Mersey Rivers by a right line generally south south east to co-ordinates 435 160mE 5 383 630mN by another right line southward to co-ordinates 435 160mE 5 383 130mN by a right line eastwards to a creek thence by that creek upstream to its intersection with gridline 436 000mE by a right line to co-ordinates 435 615mE 5 382 000mN by another right line west to a creek by that creek upstream to its intersection with the 540 metre contour thence along that contour to its intersection with the Hydro Electricity Commissions 50 metre wide transmission line easement by part of that easement generally southwesterly to the northern boundary of land vested in the Hydro Electricity Commission by that boundary and its western prolongation to the Mersey Forest Road by the eastern side of that road in a generally northerly direction to Arm River by that river downstream to the point of commencement.

EL 28/80 SHELL CO OF AUS.

842

MERSEY RIVER FOREST RESERVE

LAND DISTRICTS WESTMOR AND LINCOLN



This map shows the Mersey River Forest Reserve, which is a large area of land reserved for public use. The map is divided into land districts, and the boundaries of these districts are shown. The map also shows the Mersey River, which flows through the reserve. The map is a detailed cadastral map, showing the boundaries of individual land parcels. The map is oriented with North at the top. The scale of the map is 1:50,000.