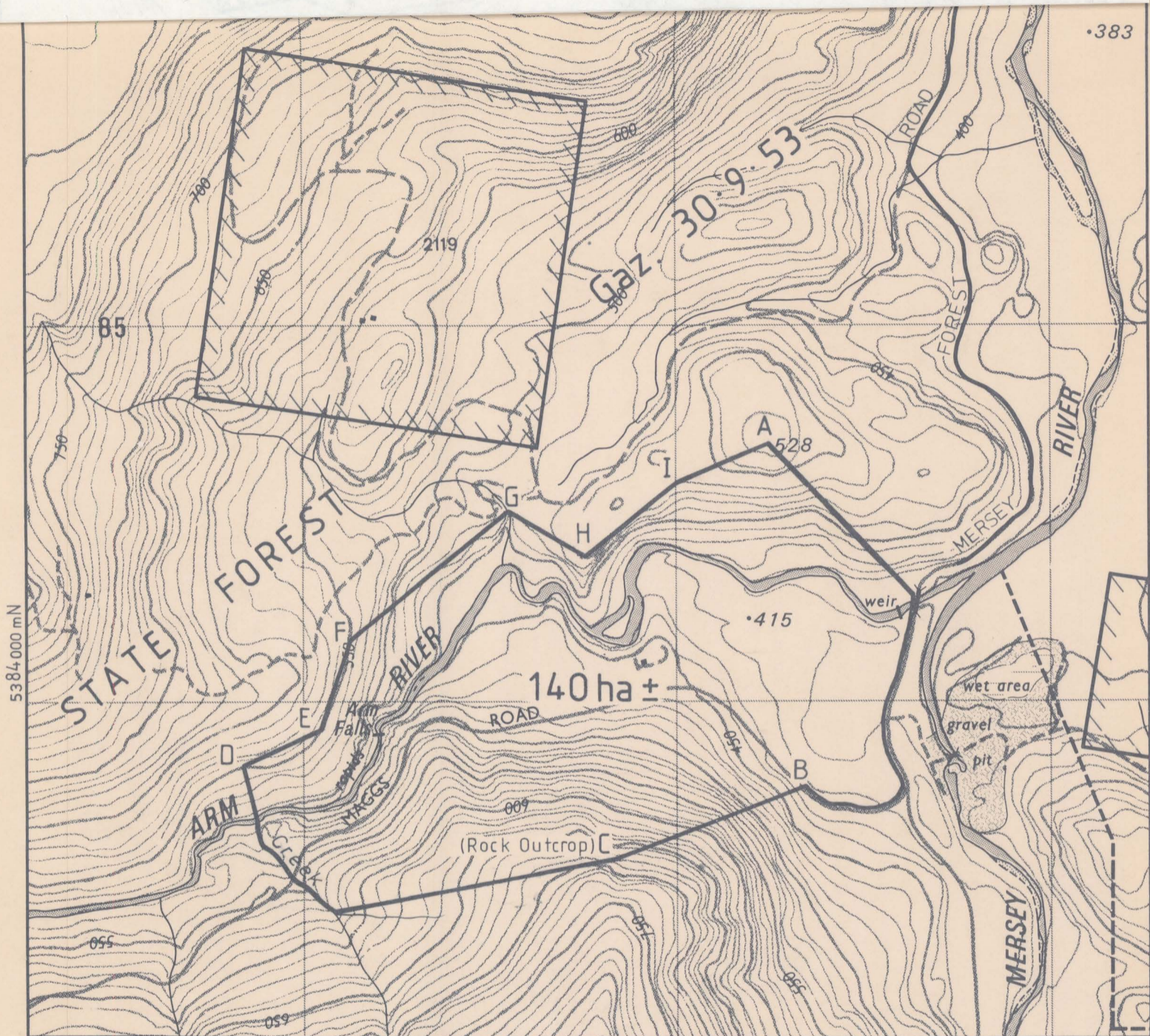


•383



5384 000 m N

4 330 00 m E

Co-ordinates of Boundary Points

Pt	Easting(m)	Northing(m)	Pt	Easting (m)	Northing(m)	Pt	Easting (m)	Northing(m)
A	434246 ±	5384690 ±	D	432841 ±	5383829 ±	G	433552 ±	5384510 ±
B	434330 ±	MAGGS RD	E	433039 ±	5383925 ±	H	433756 ±	5384390 ±
C	433834 ±	5383577 ±	F	433120 ±	5384171 ±	I	434000 ±	5384585 ±



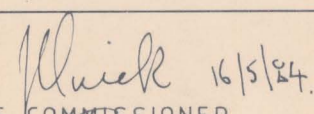
FORESTRY COMMISSION TASMANIA

ARM RIVER FOREST RESERVE

LAND DISTRICT OF LINCOLN
PARISH OF LIENA

REGISTERED
PLAN
NUMBER

722

SCALE	1:15000	MICROFILM NUMBER	2860-8405	REGISTRATION
CONTOUR INTERVAL	10 metres	GAZETAL DATE		 CHIEF COMMTSSIONER
REFERENCE	35753			