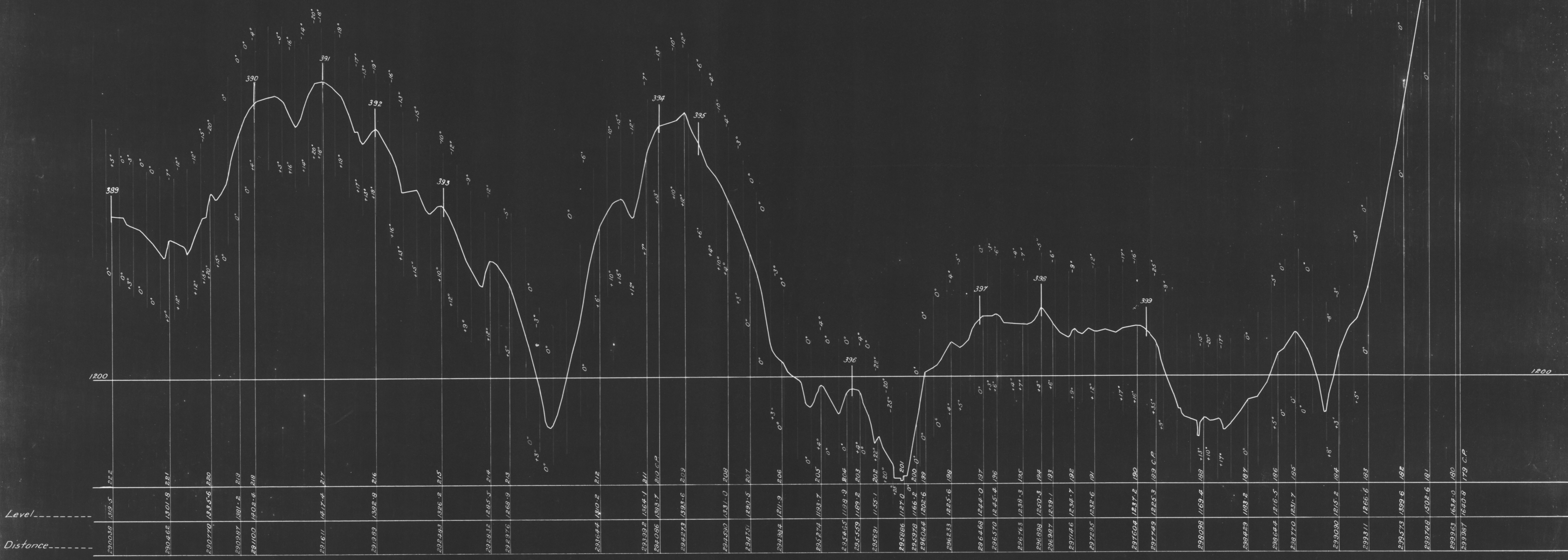
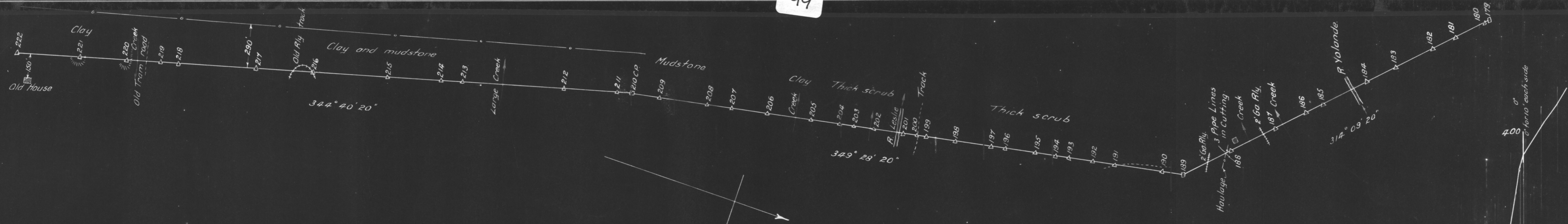


5 cm



Subtract 140' from distance for Nive datum

NOTE  
 From Station 6 (sheet 2) actual distances are 40ft shorter than shown  
 From Point D (sheet 23) levels are 1ft lower than shown

750/18

*Handwritten signature*  
 for COMMISSIONER  
 18/5/35

GOVERNMENT OF TASMANIA  
 HYDRO-ELECTRIC DEPT.

WEST COAST TRANSMISSION LINE  
 PLAN AND LONGITUDINAL SECTION

SCALE	Horizontal 1" = 400'	Vertical 1" = 20'
DRAWN	C.A.J.	UNASSIGNED REFERENCE
TRACED	B.S.T.	Level Book 217
CHECKED	F.R.	
APPROVED	S.S.	
DATE	17/5/35	

SHEET 23  
**4488**  
 38 SHEETS