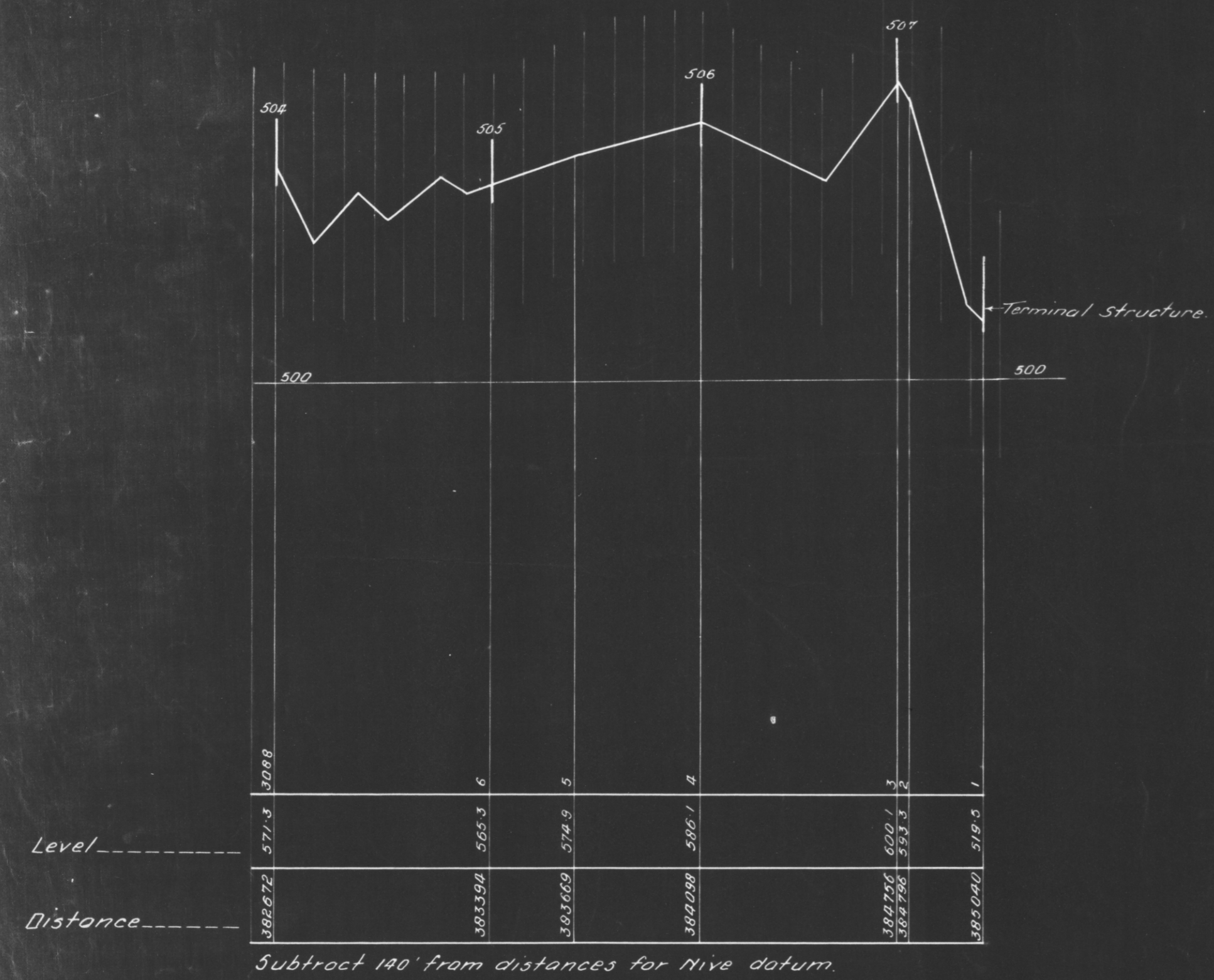
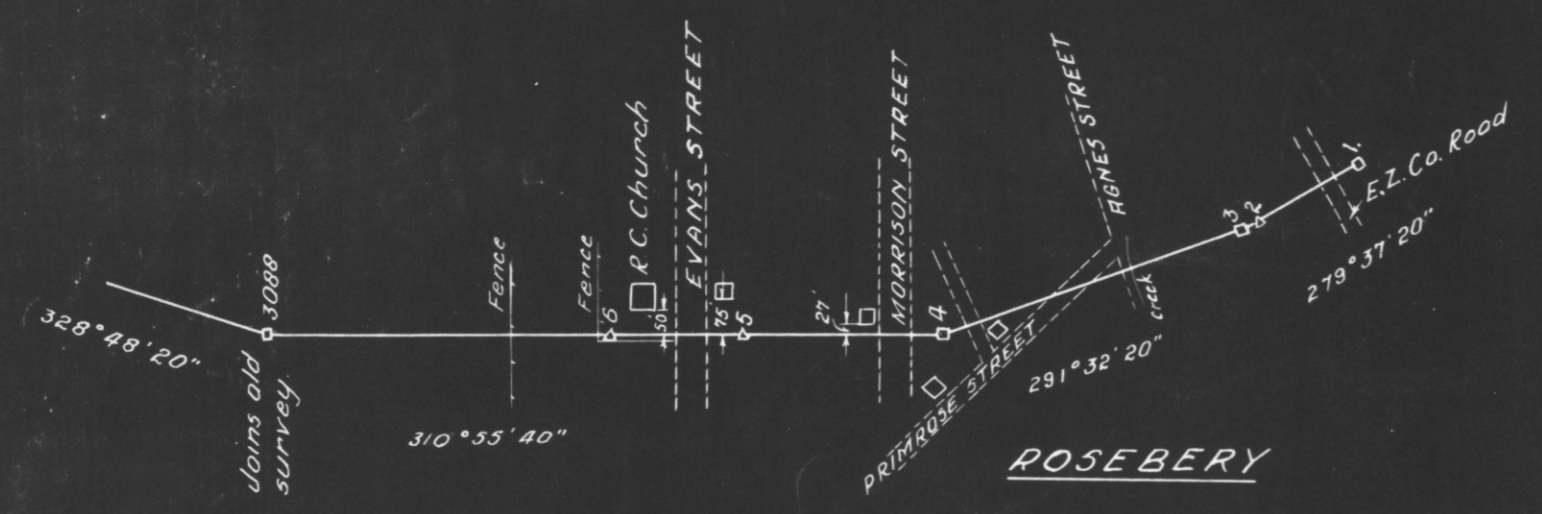


5 cm



NOTE
 From Point 'E' (sheet #37) distances are 55ft shorter than shown
 From Point 'D' (sheet #23) levels are 15ft lower than shown

Fred. Field
 For COMMISSIONER

GOVERNMENT OF TASMANIA
 HYDRO-ELECTRIC DEPT.

NIVE ROSEBERY TRANSMISSION LINE
 PLAN AND LONGITUDINAL SECTION

SCALE	Horizontal = 400' = 1 Inch Vertical = 40' = 1 Inch	Sheet #38
DRAWN	<i>L.S.D.</i>	BY REFERENCE
CHECKED	<i>M.T.</i>	
DATE	12/10/34	

4497
 38 Sheets