

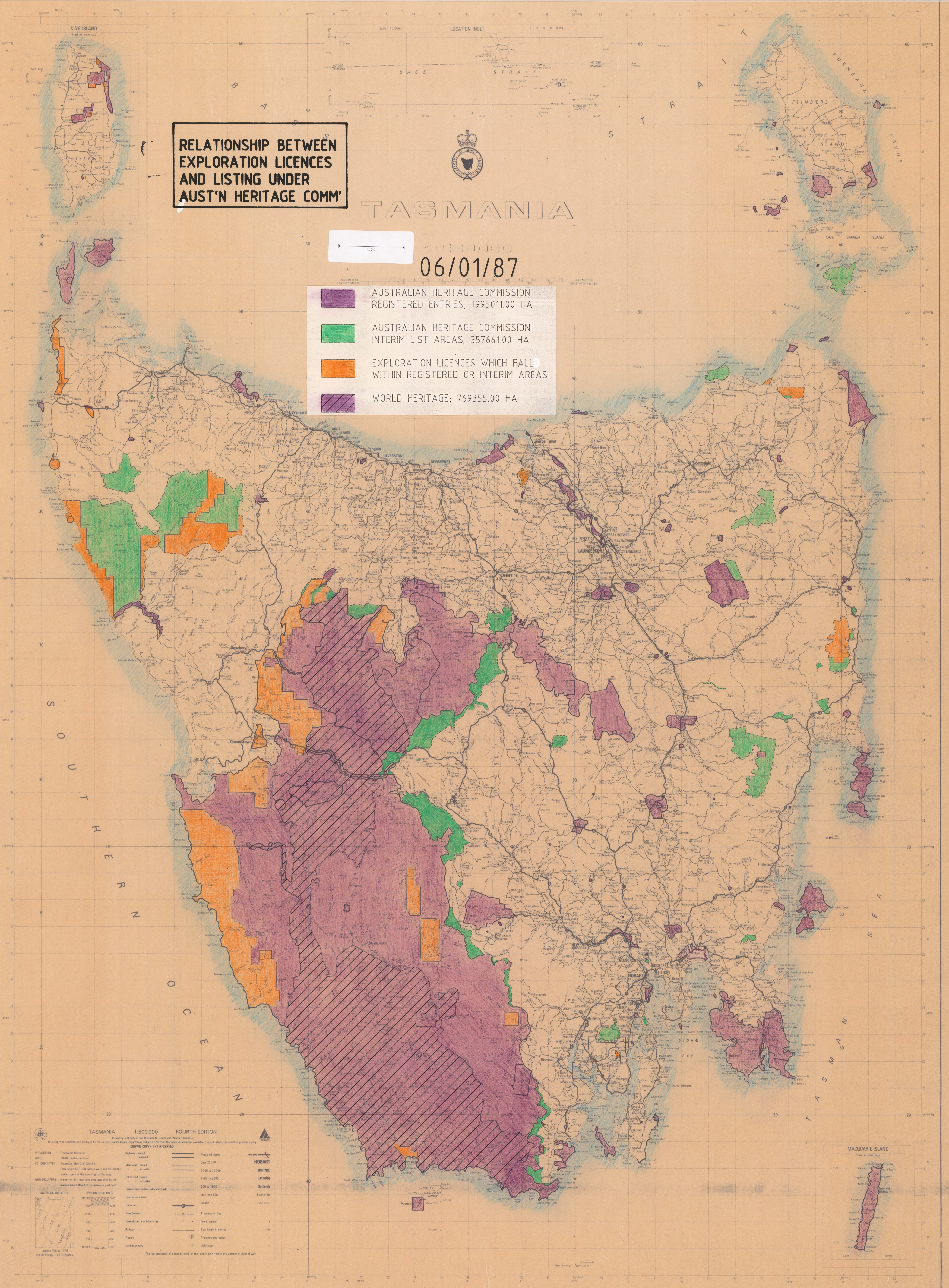
RELATIONSHIP BETWEEN EXPLORATION LICENCES AND LISTING UNDER AUST'N HERITAGE COMM'



TASMANIA

06/01/87

-  AUSTRALIAN HERITAGE COMMISSION REGISTERED ENTRIES, 1995011.00 HA
-  AUSTRALIAN HERITAGE COMMISSION INTERIM LIST AREAS; 357661.00 HA
-  EXPLORATION LICENCES WHICH FALL WITHIN REGISTERED OR INTERIM AREAS
-  WORLD HERITAGE; 769355.00 HA



TASMANIA 1:500000 FOURTH EDITION

Produced by authority of the Minister for Lands and Works, Tasmania.
This map was compiled and produced by the Survey Branch Lands Department Hobart, 1973 from the latest information available. It is not wholly the result of precise surveys.
CROWN COPYRIGHT RESERVED

PROJECTION ED GRID COORDINATES NOMENCLATURE MAGNETIC VARIATION	<p>1:500000 Mercator Australian Map Grid Zone 55 False edge 500 000 metres west and 10 000 000 metres south of the true equator of the globe Names on this map have been approved by the Nomenclature Board of Tasmania in part only Magnetic values 1973 Annual Change 0.13 E/Gauss</p>	<p>Highway - coded Main road - coded Other road - coded Fenced road and/or without a track Foot or pack track Race or Road barrier Road distance in kilometres Rubbish Airport Landing ground</p>	<p>Proposed place Over 25000 5000 to 25000 1500 to 5000 500 to 1500 Less than 500 7 soundings line Tide gauge Spot height in metres Engineering station Lighthouse</p>	<p>HOBART BURNIE LAUNCESTON Islands Scatterplot</p>
---	--	---	--	--

