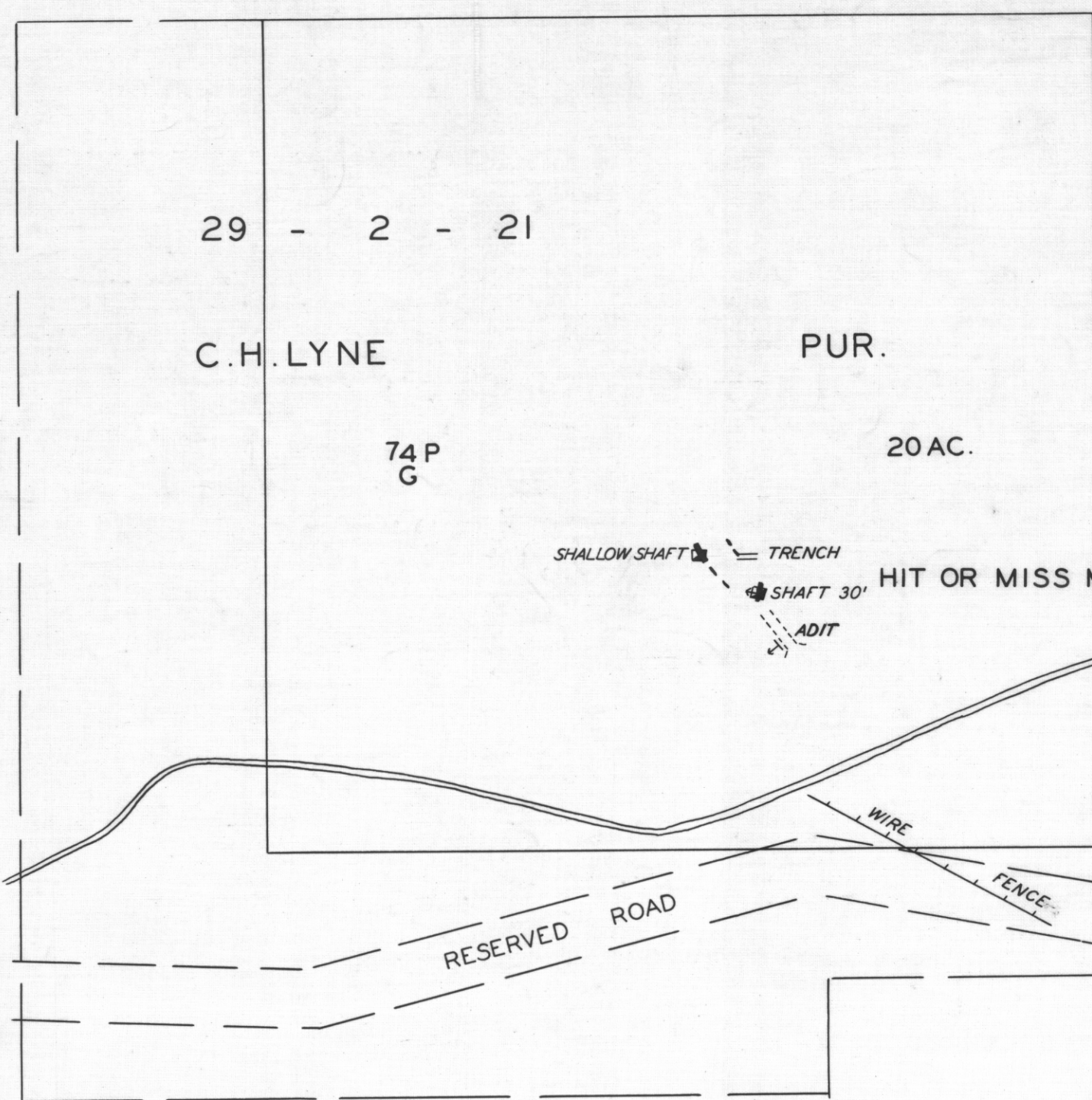


786/148

5 cm

SURFACE WORKINGS WEST MIAMI AND MIAMI MINES

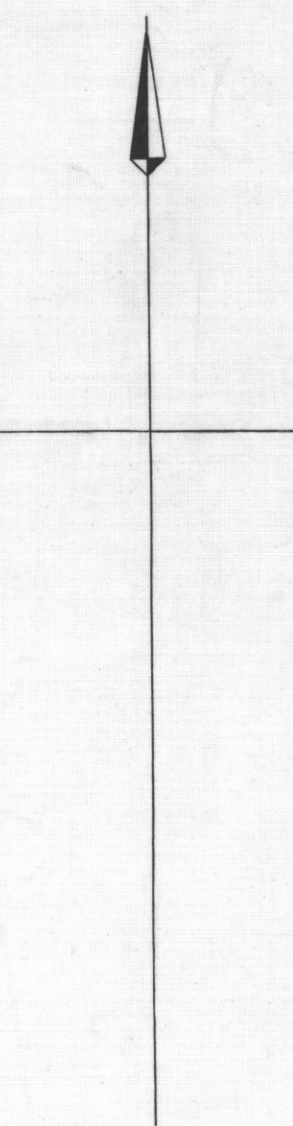
FINGAL



79 - 3 - 38

F. M. CLERK PUR.

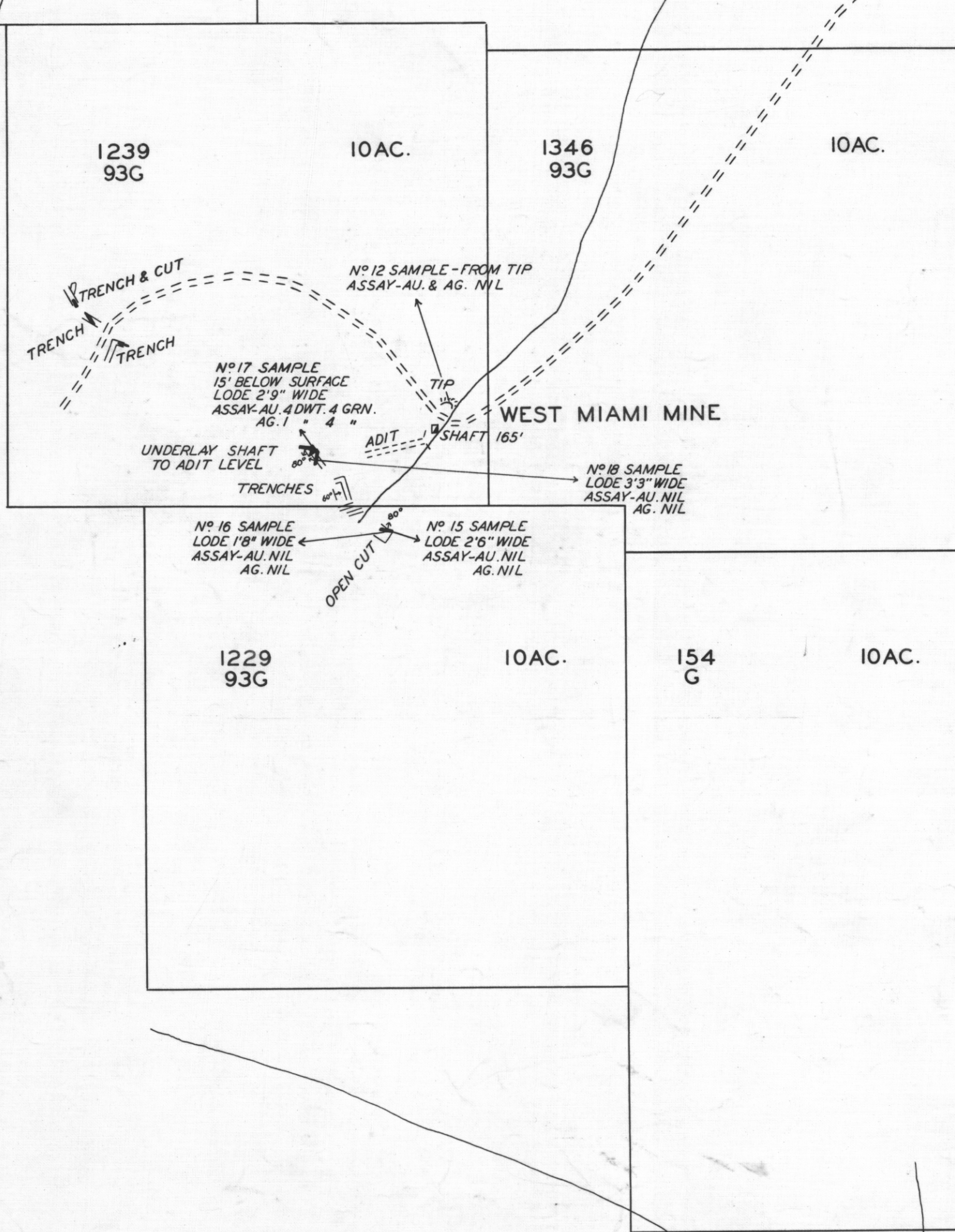
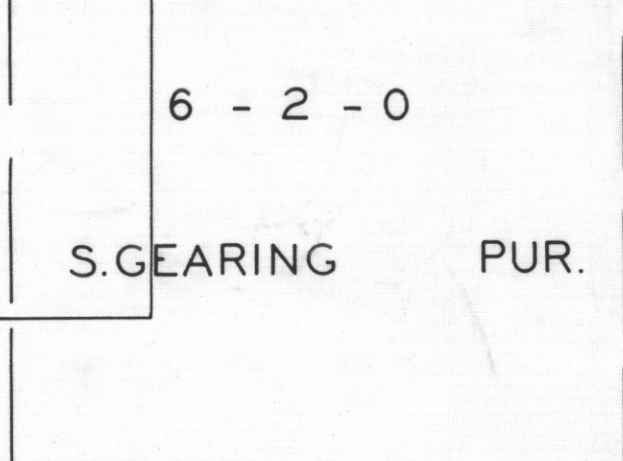
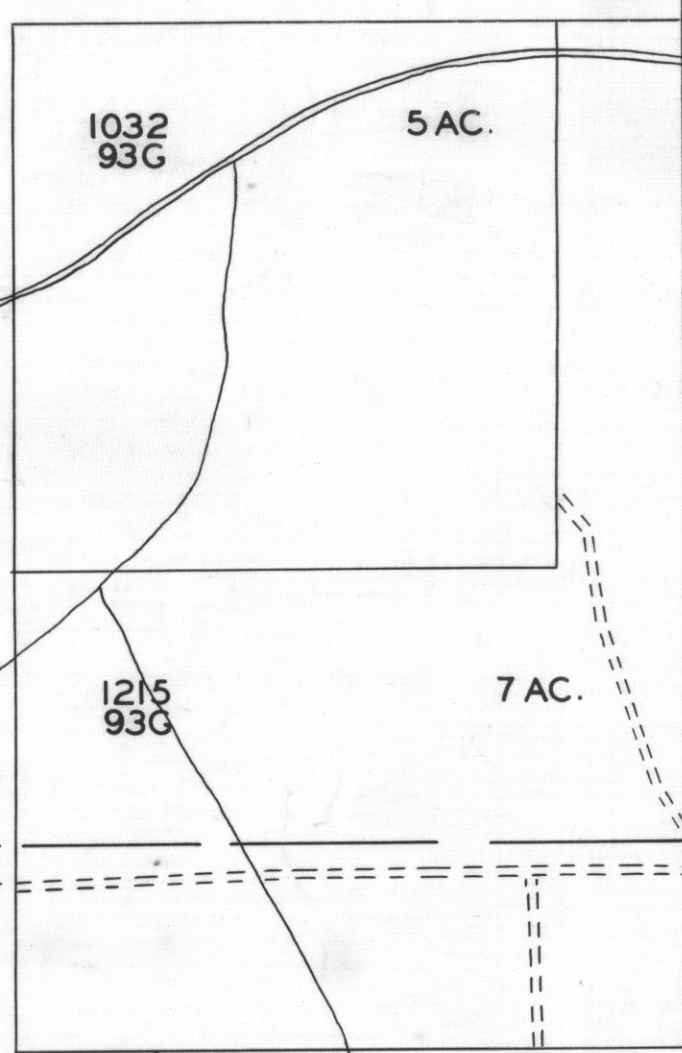
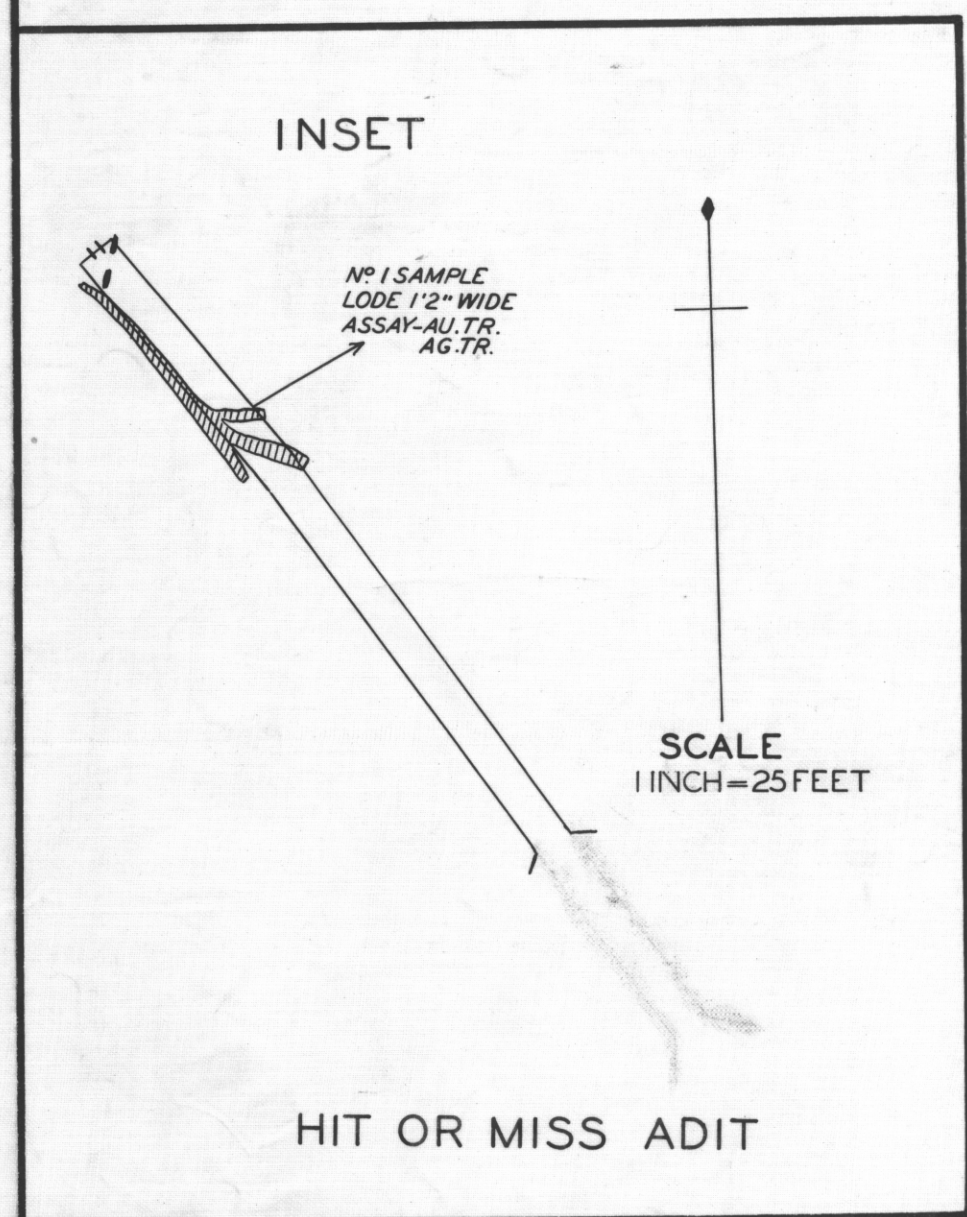
MULLENS CREEK



SCALE
1 INCH = 2 1/2 CHAINS

100 AC.

R. G. TALBOT PUR.



Shale
ACTING GOVERNMENT GEOLOGIST
MARCH 1940

9-206