

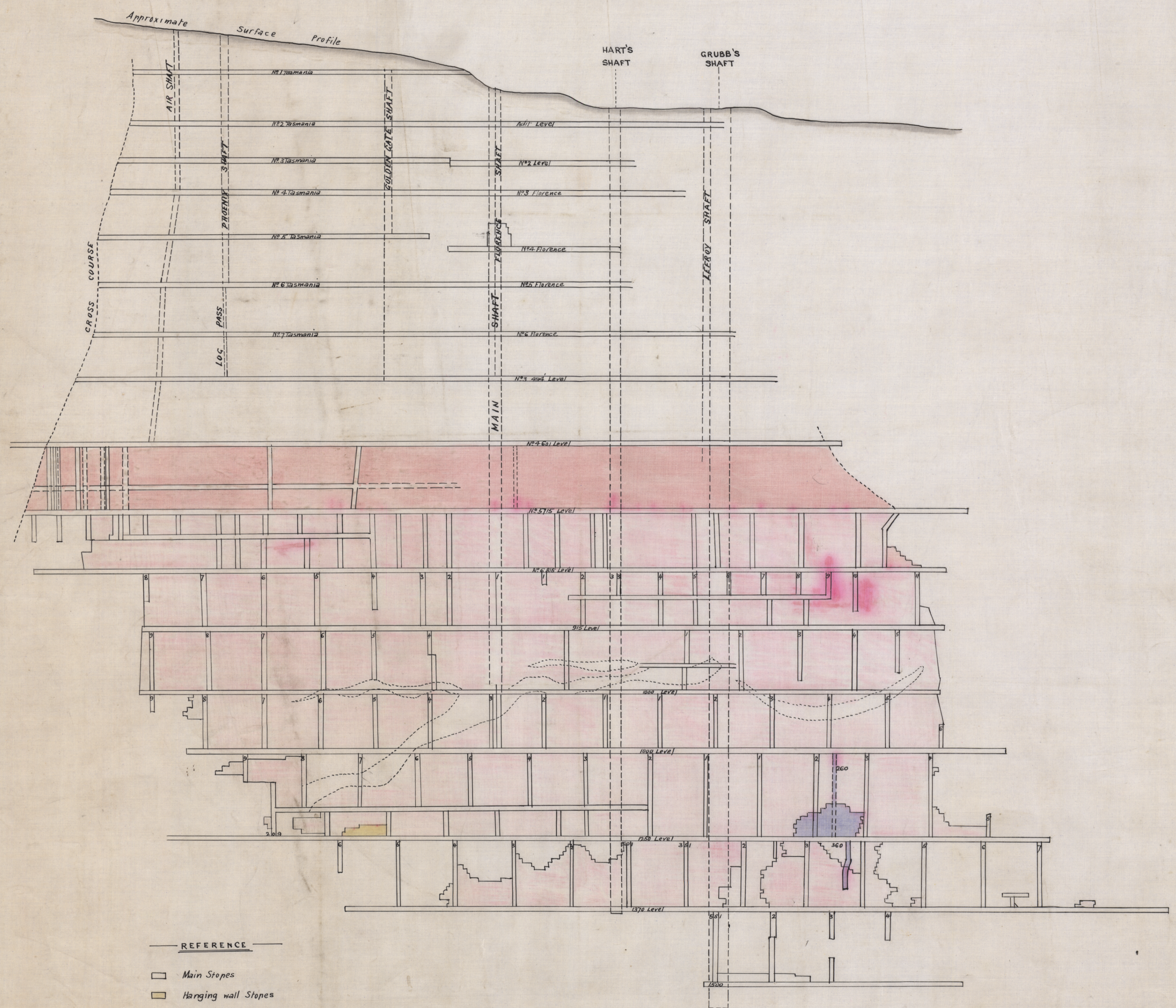
5 cm

THE TASMANIA GOLD MINE, LTD.

LONGITUDINAL SECTION

Scale 100 feet to 1 inch.

WEST



- REFERENCE
- Main Stopes
  - Hanging wall Stopes
  - Footwall Stopes

795 A/30

Brought up to 30<sup>th</sup> Sept. 1912 & issued with Report for year ending same date London, January 9<sup>th</sup> 1913.