

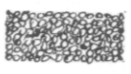


8/28

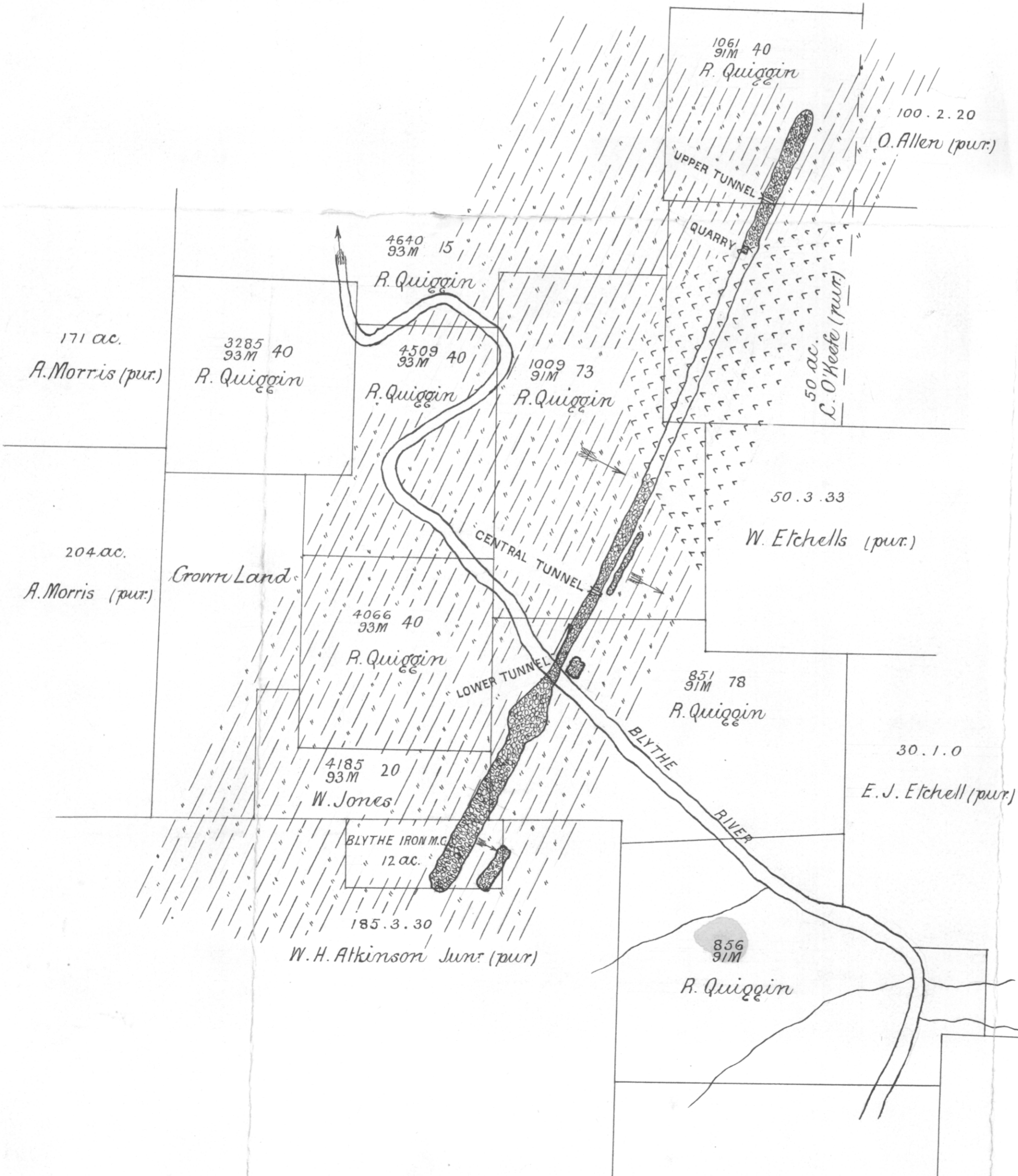
PLAN OF IRON-ORE DEPOSIT BLYTHE RIVER

Scale 0 5 10 20 30 Chains

-  SLATES AND SANDSTONES (Cambro Silurian)
-  BASALT (Tertiary)
-  IRON ORE (Hematite)

W. H. Twelvetrees
Govt. Geologist
Jan. 1901

5 cm



8

72