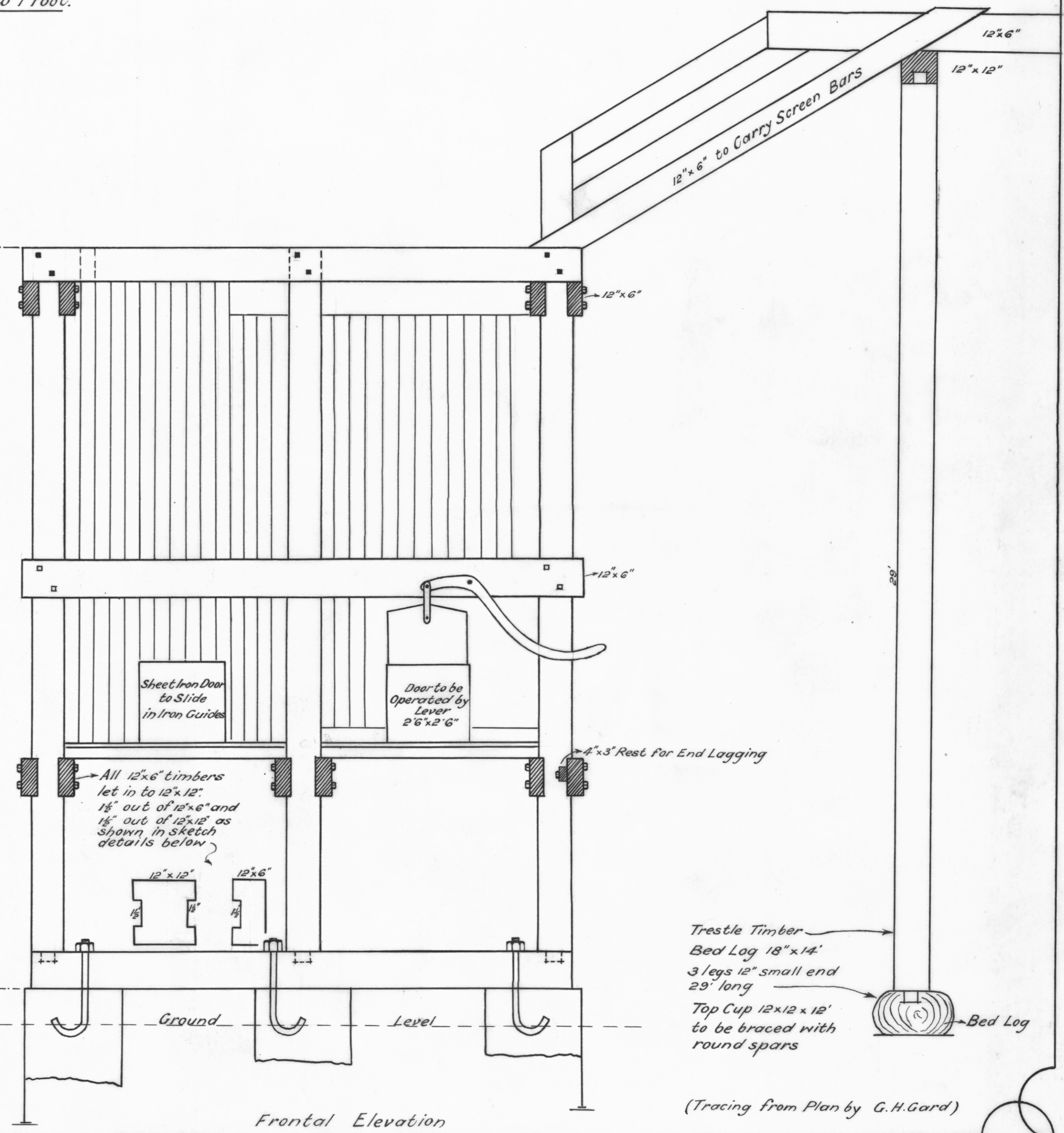
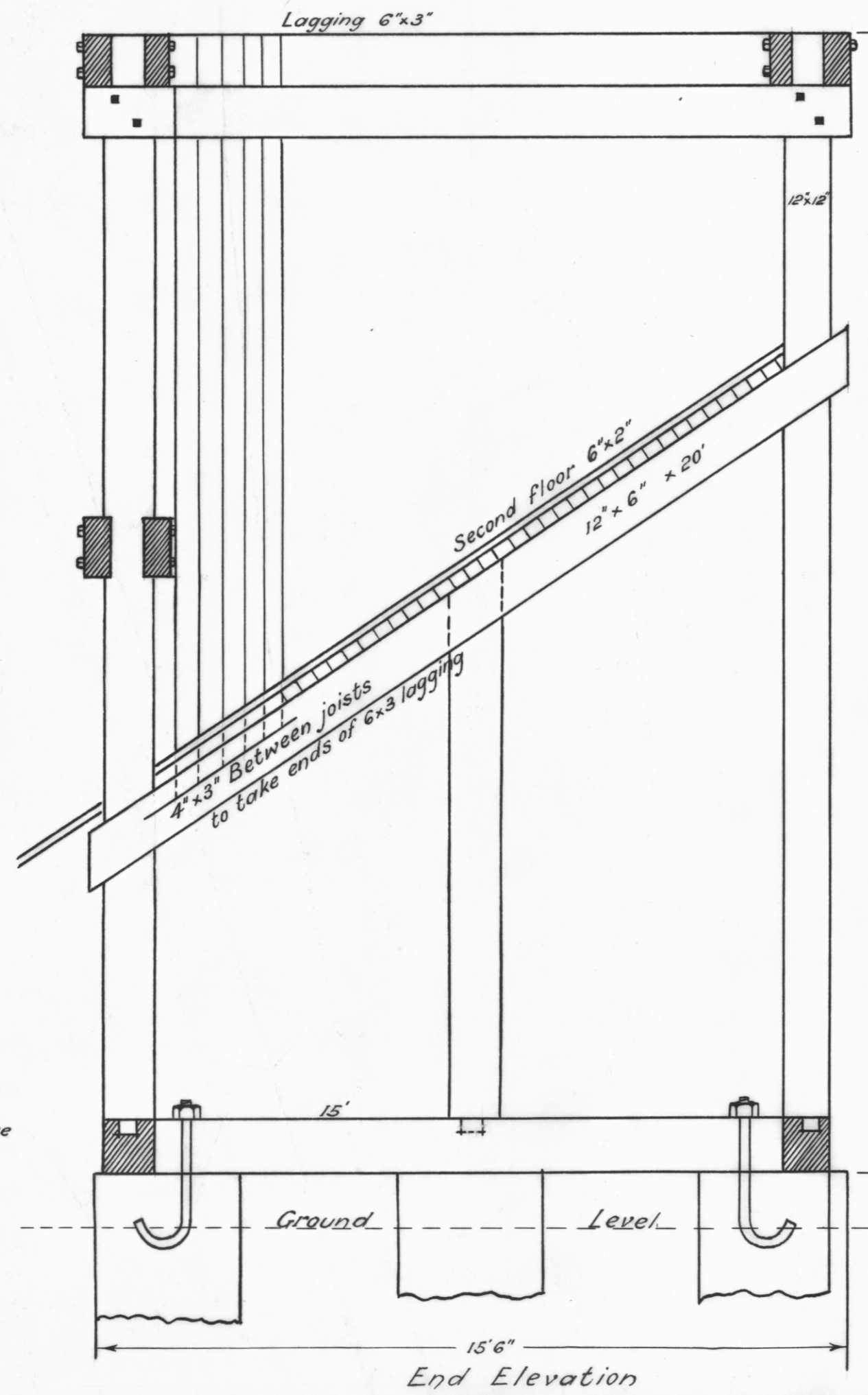
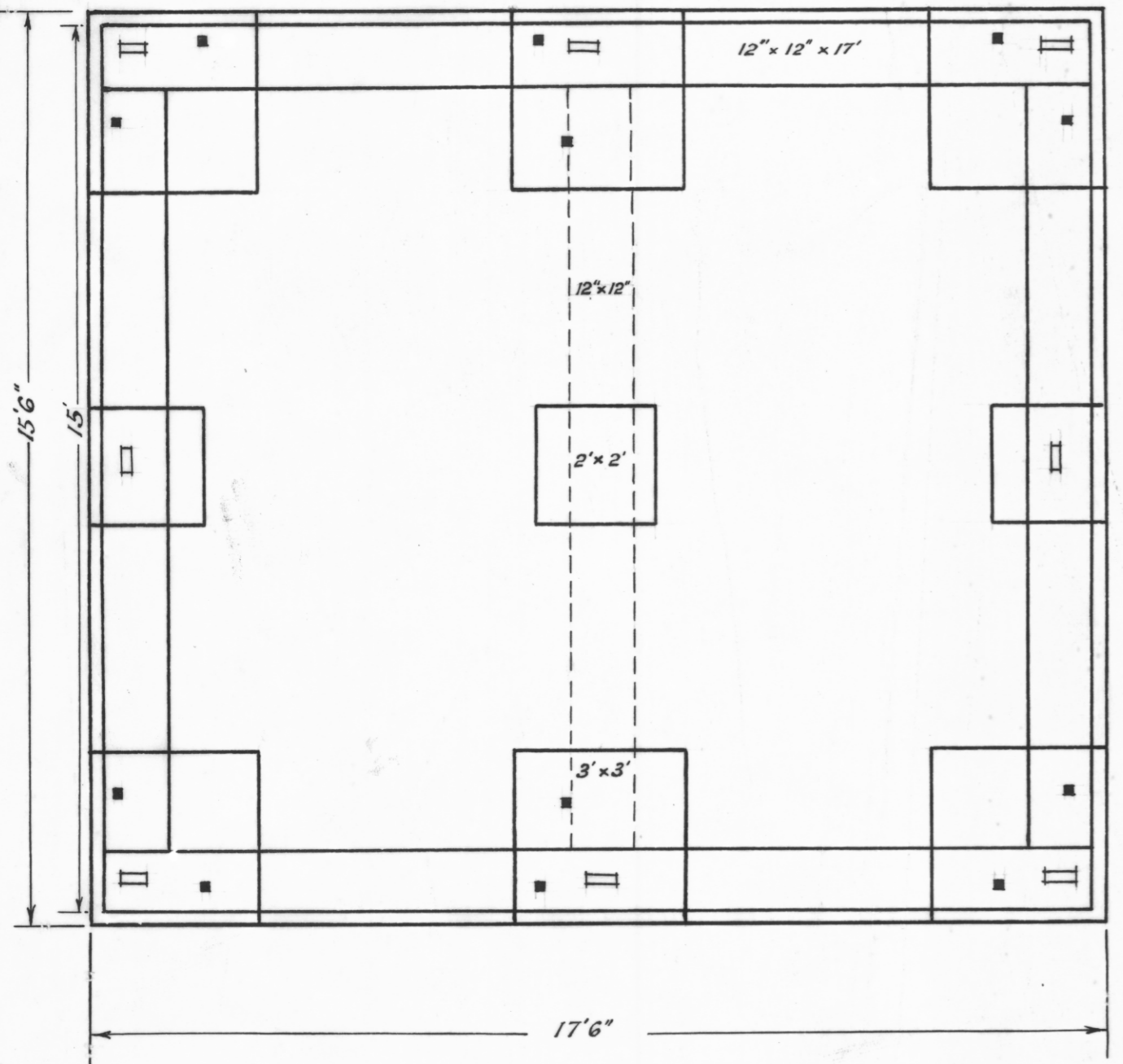


PLAN AND ELEVATION OF COAL BIN (40 TONS CAPACITY) DALMAYNE COLLIERY

Materials Required

Legs	6	12 x 12	23' 6"	squared
Bed Logs	2	12 x 12	17'	"
"	3	12 x 12	13'	"
Floor joists	6	12 x 6	20'	"
Walings	6	12 x 6	18'	"
"	4	12 x 6	16'	"
Floor Base	36	6 x 3	17'	sawn
Top Floor	32	6 x 2	18'	"
Centre Legs	3	12 x 12	12'	squared
Lagging Front	30	6 x 3	16'	sawn
" Ends	27	6 x 3	14'	"
"	27	6 x 3	10'	"
" Back	30	6 x 3	6'	"
Screen	2	12 x 6	16'	squared
Holding down				
Bolts	12	7/8" x 2'		
Waling Bolts	50	5/8" x 1' 6 1/2" inside head		
Deck Spikes		6" for 6x3 floor		
Cement	24	Bags		
Gravel and sand		about 15 yards		
Stones		about 10" to be put in for plums		

Scale: 3/8" to 1 foot.



(Tracing from Plan by G.H.Gard)