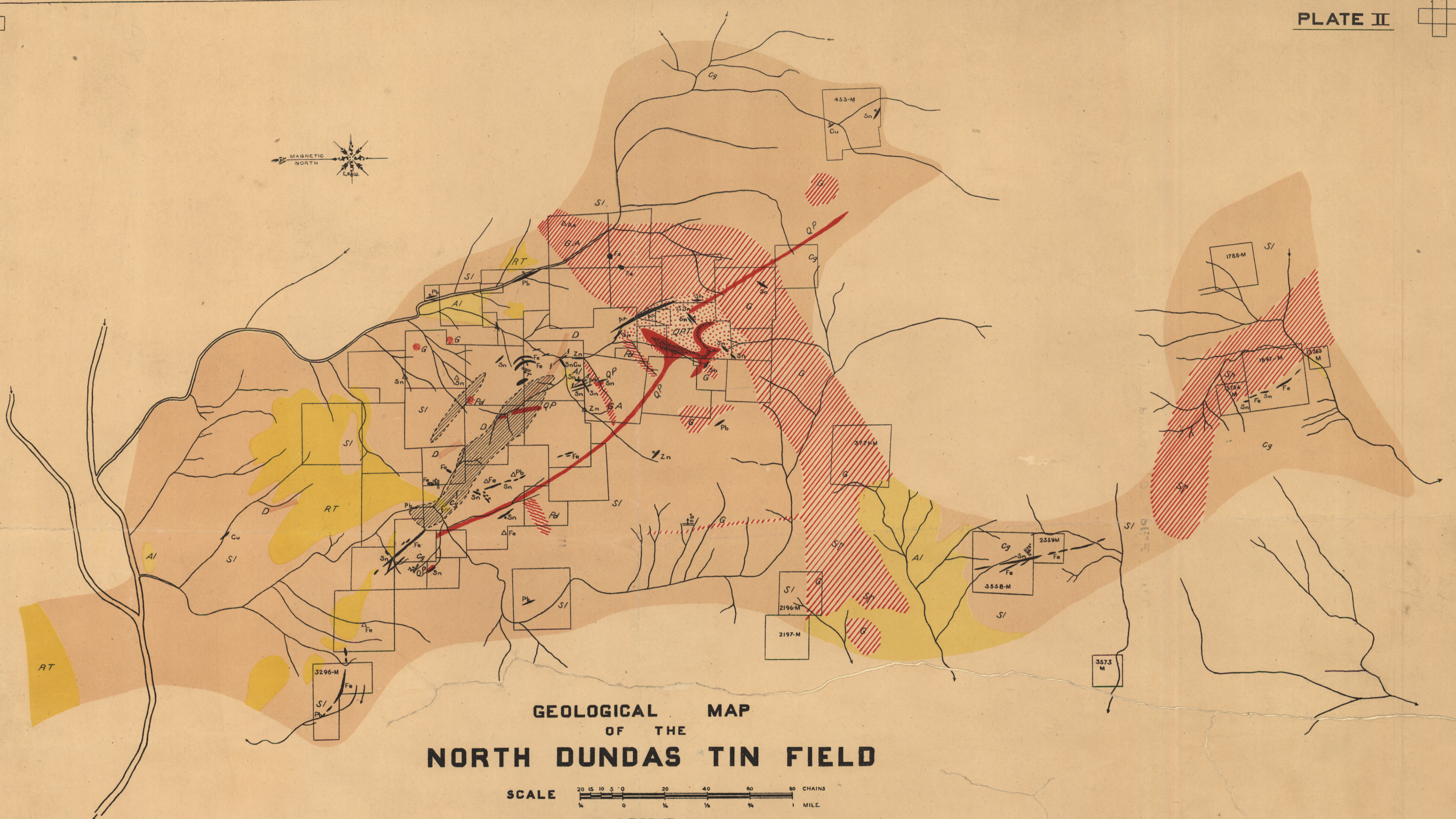


5 cm



GEOLOGICAL MAP OF THE NORTH DUNDAS TIN FIELD

SCALE 0 20 40 60 80 CHAINS
0 1/4 1/2 3/4 1 MILE

LEGEND

- | | | | | | |
|-----------------|---|----------------------------|--------|---------------------------------------|----|
| PORPHYROID | Pd | CAMBRO-ORDOVICIAN SLATE | SI | COMPLEX LODGE SYSTEMS | |
| BASIC ROCKS | Serpentine Sp, Gabbro G, Gabbro-Amphibolite GA | DUNDAS SLATES CONGLOMERATE | Cg | RETICULATING VEINS IN QUARTZ-PORPHYRY | |
| QUARTZ-PORPHYRY | QP | OLDER RIVER TERRACES | RT | LODE-MATTER OF UNDETERMINED STRUCTURE | △ |
| DIABASE | D | RECENT ALLUVIAL | AI | LODES | ↗ |
| LODE CONTENTS: | TIN...Sn, LEAD...Pb, ZINC...Zn, COPPER...Cu, AXINITE...Ax, ACTINOLITE...Ac, GOSSAN...Fe | QUARTZ-PORPHYRY TALUS | Q.P.T. | FAULTS | ↘ |
| | | | | STRIKE AND DIP OF STRATA | ↗↘ |

*L. Keith Ward
Assistant Government Geologist.
12. 2. 1909.*