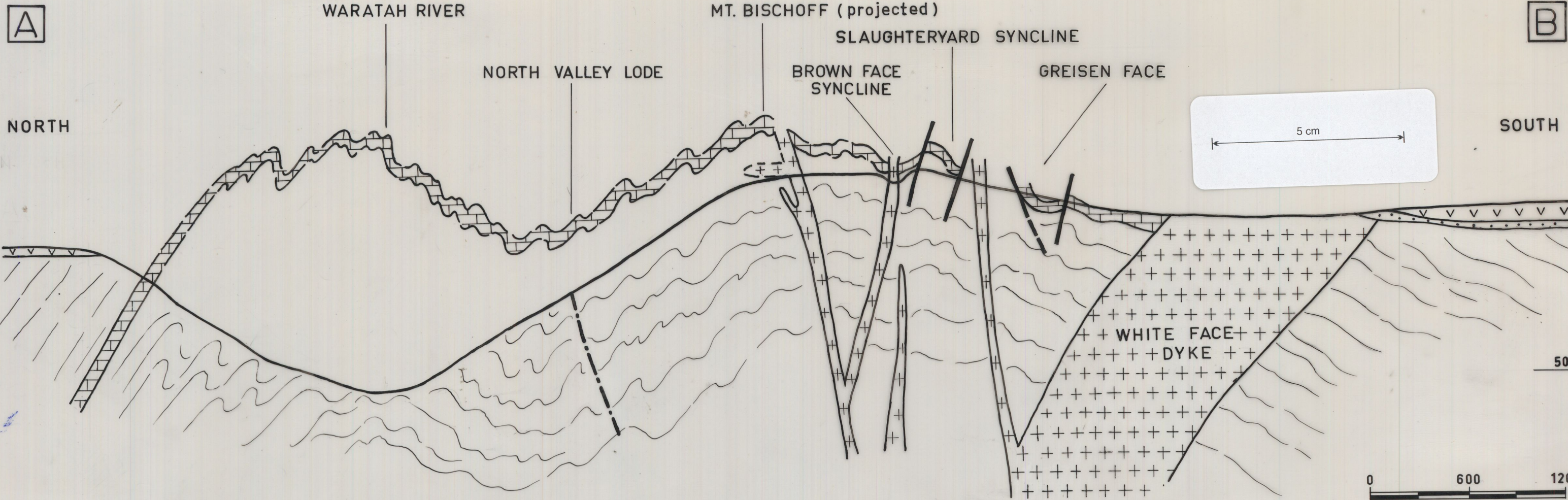


8249



TERTIARY

+ + BASALT
 SANDS

DEVONIAN

+ + + QUARTZ PORPHYRY DYKES

CAMBRIAN

. . . . GREYWACKE & MUDSTONE

PROTEROZOIC (?)

~ ~ ~ SANDSTONE & SHALE

| | | DOLOMITE

