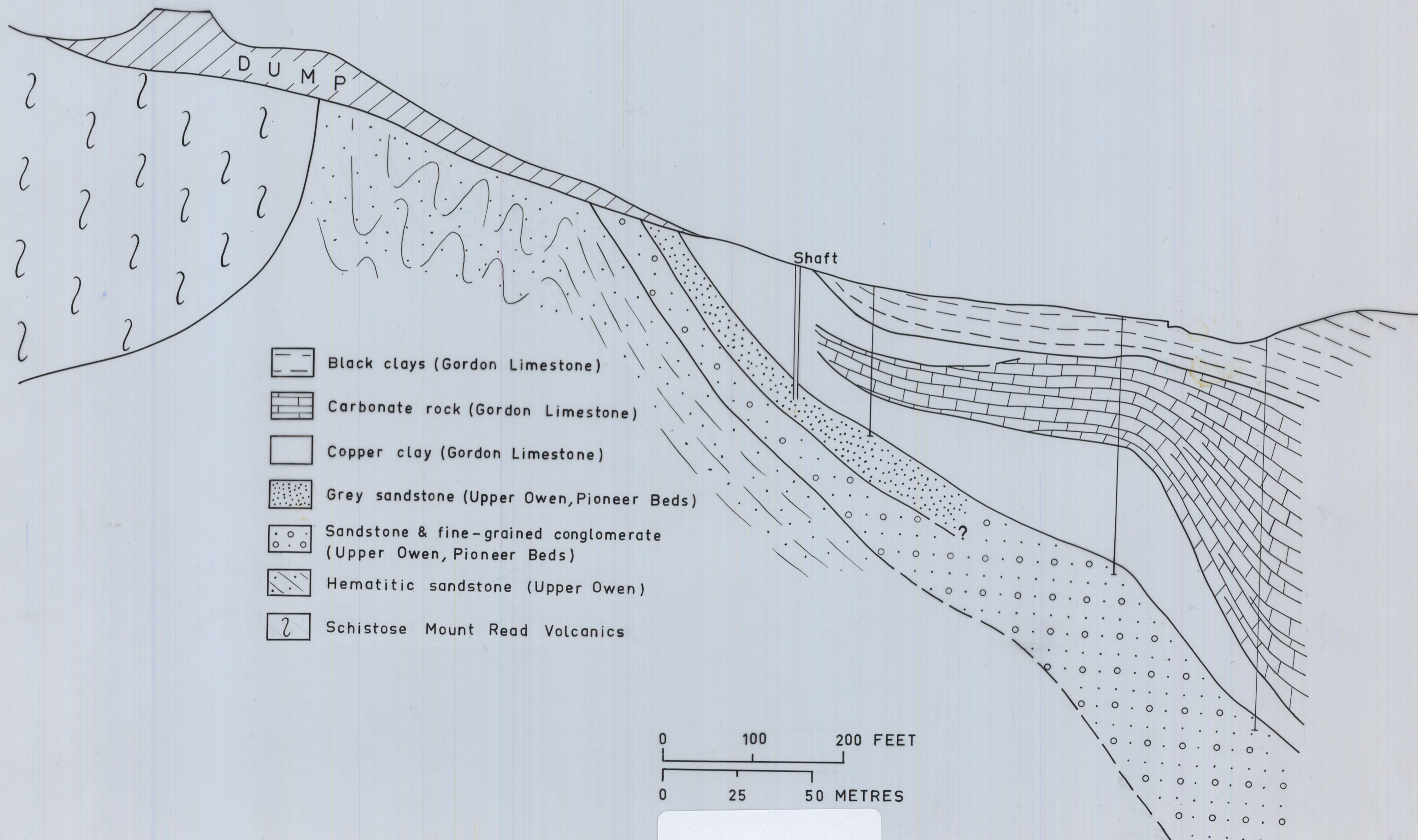
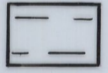
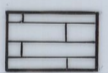
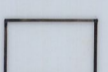

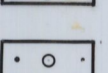
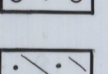
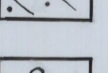


West
C

East
D



-  Black clays (Gordon Limestone)
-  Carbonate rock (Gordon Limestone)
-  Copper clay (Gordon Limestone)
-  Grey sandstone (Upper Owen, Pioneer Beds)
-  Sandstone & fine-grained conglomerate (Upper Owen, Pioneer Beds)
-  Hematitic sandstone (Upper Owen)
-  Schistose Mount Read Volcanics

0 100 200 FEET
0 25 50 METRES

5 cm