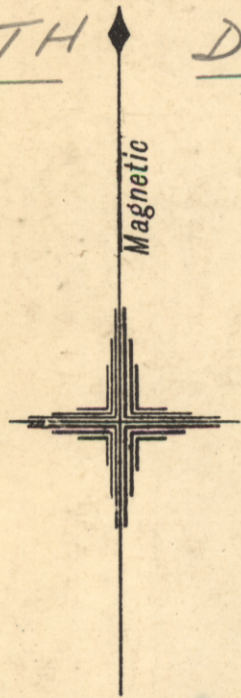


82B/41

GEOLOGICAL SKETCH MAP
OF THE
COUNTRY SOUTH OF THE SCAMANDER

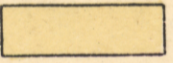
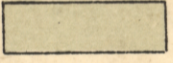


FALMOUTH DISTRICT

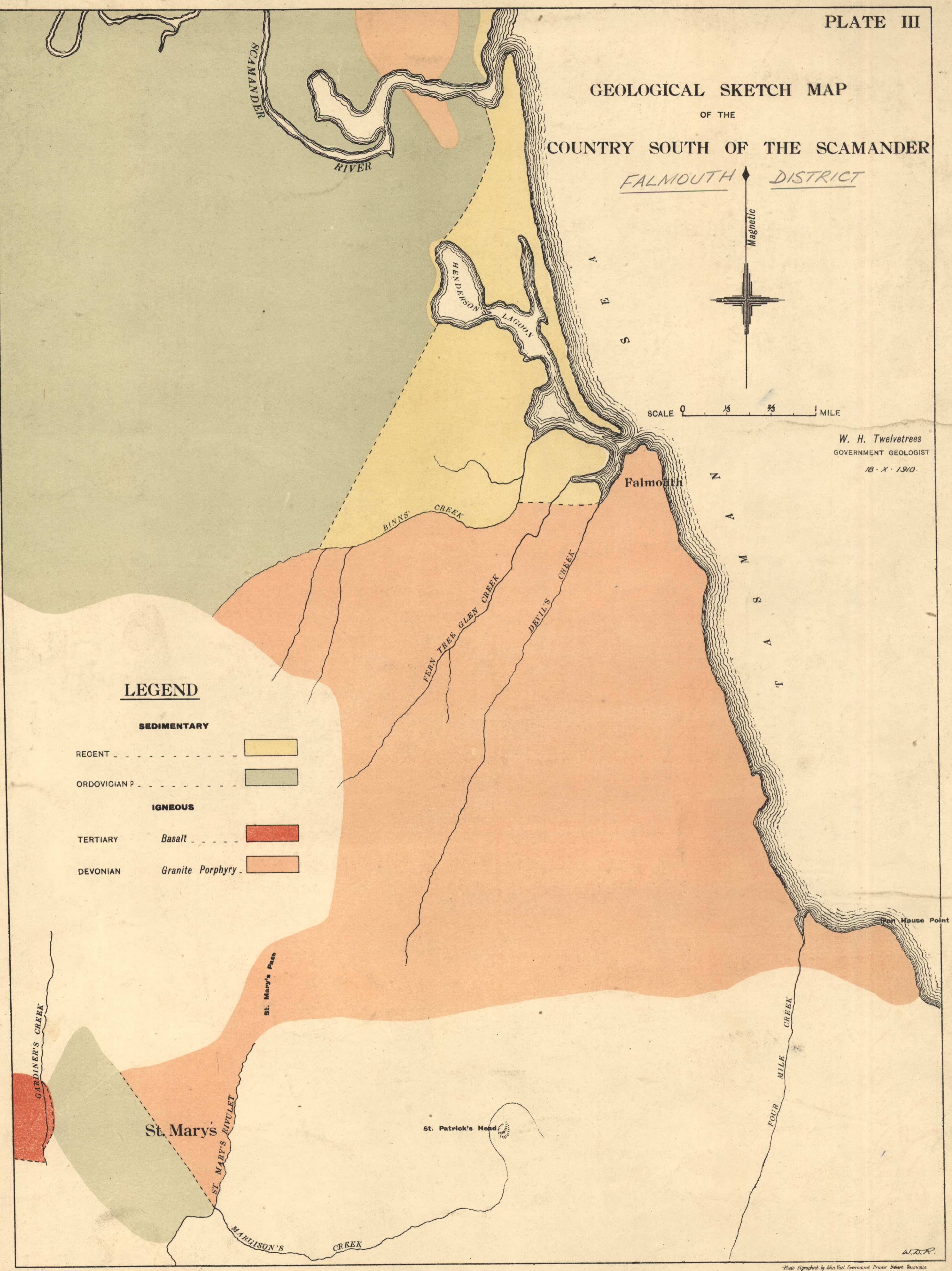


SCALE 0 1/4 1/2 1 MILE

W. H. Twelvetrees
GOVERNMENT GEOLOGIST
18-X-1910.

LEGEND

| | |
|---------------------------|---|
| SEDIMENTARY | |
| RECENT |  |
| ORDOVICIAN P. |  |
| IGNEOUS | |
| TERTIARY Basalt |  |
| DEVONIAN Granite Porphyry |  |



82B

303

5 cm

17-36