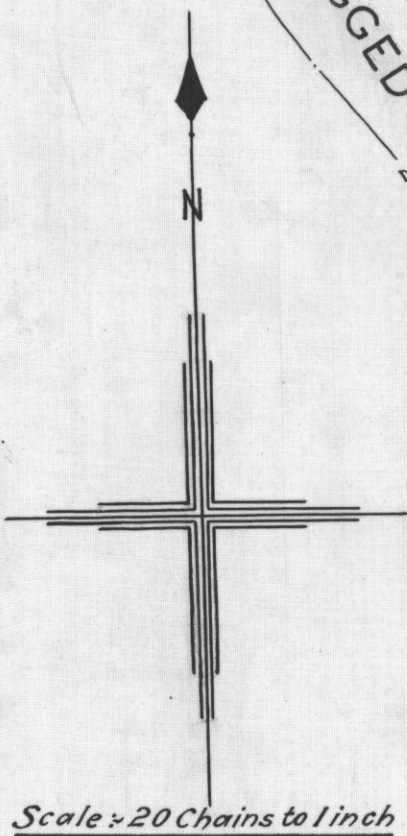
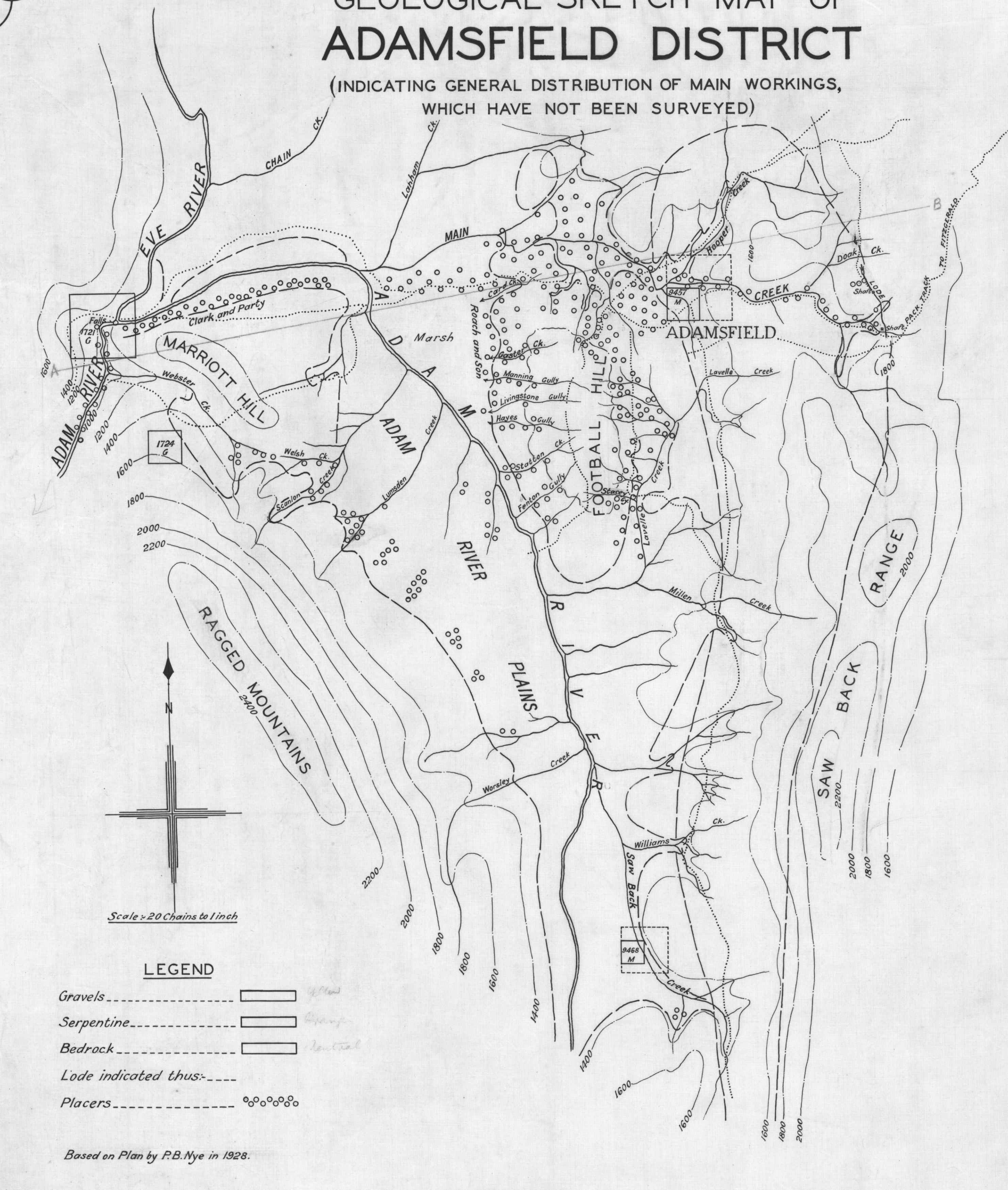


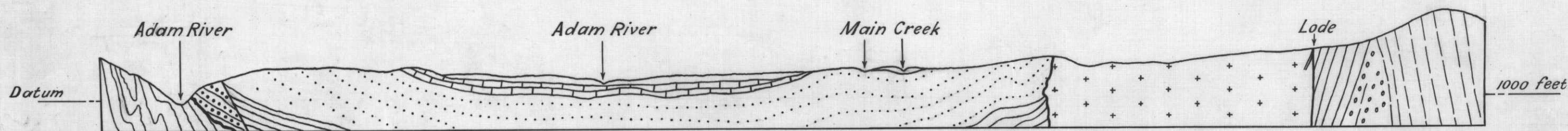
GEOLOGICAL SKETCH MAP OF ADAMSFIELD DISTRICT

(INDICATING GENERAL DISTRIBUTION OF MAIN WORKINGS, WHICH HAVE NOT BEEN SURVEYED)

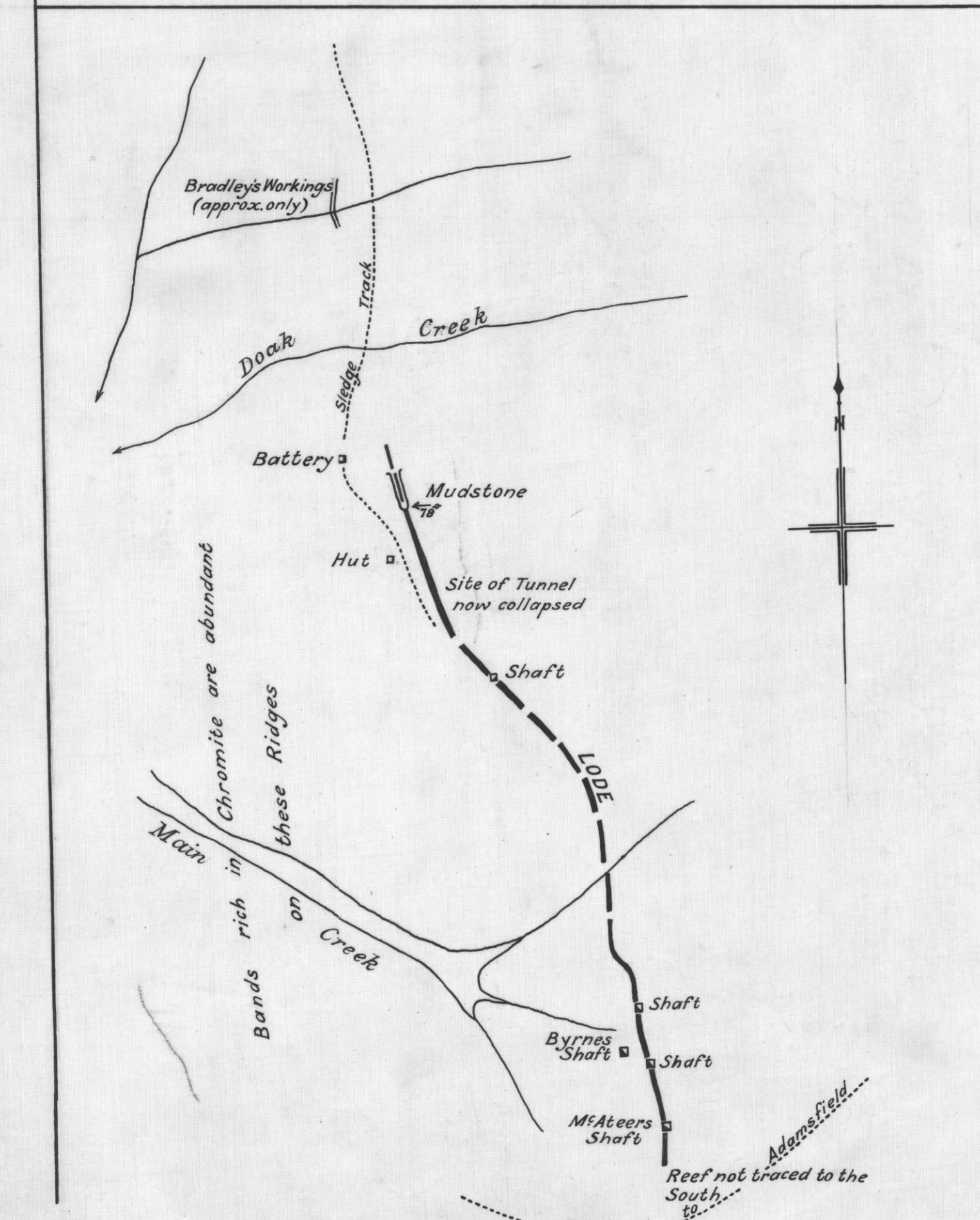
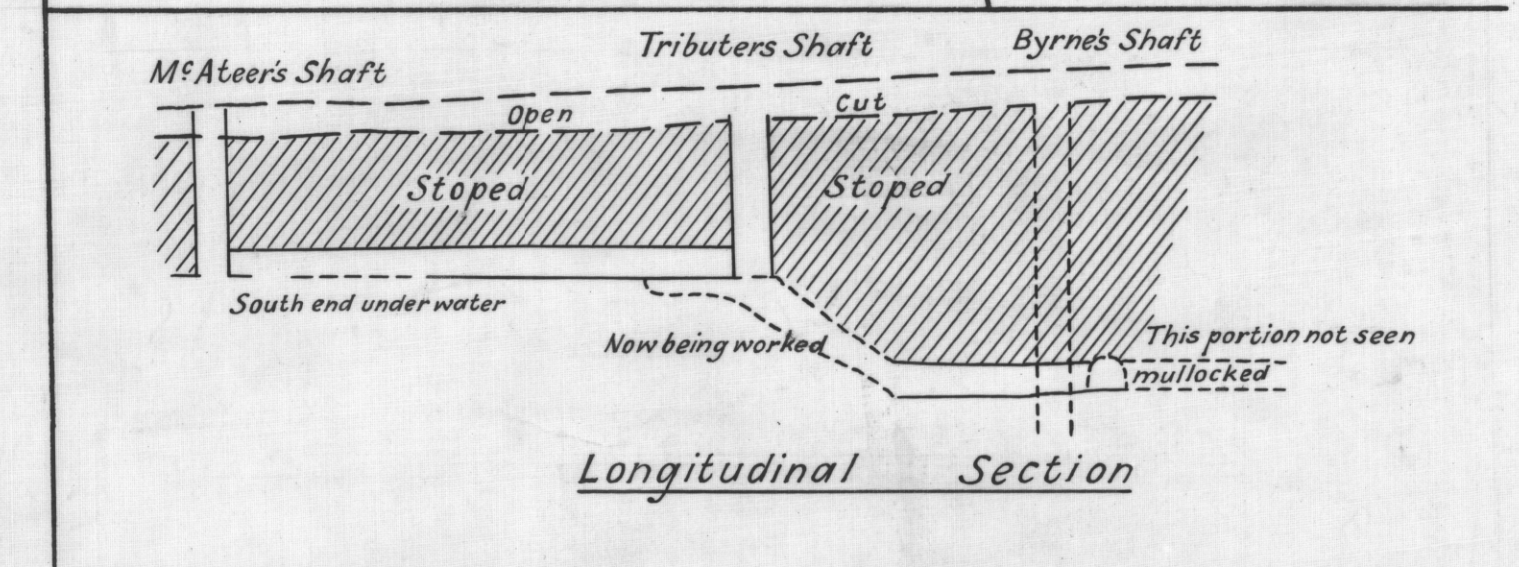
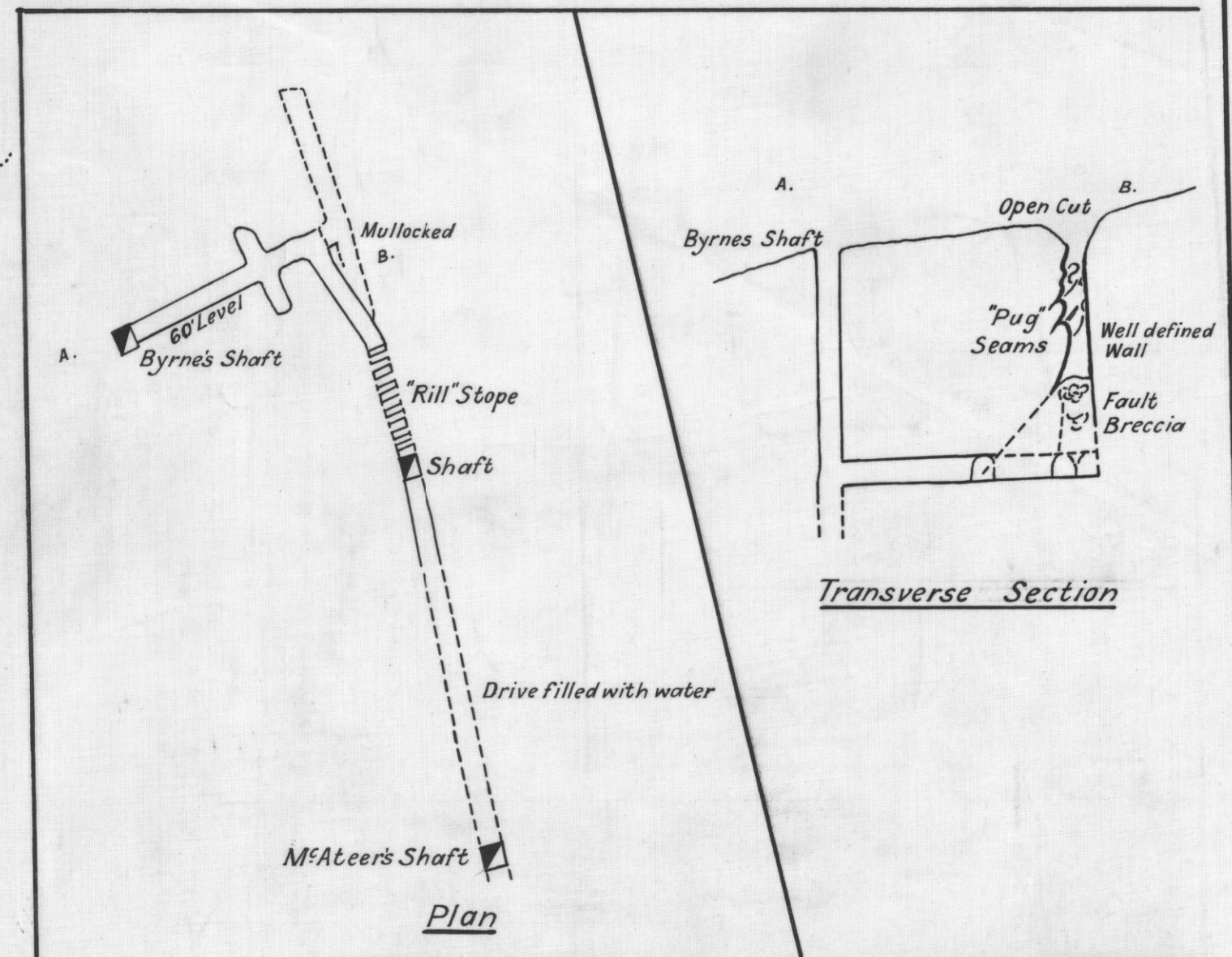


- LEGEND**
- Gravels ----- [Symbol]
 - Serpentine ----- [Symbol]
 - Bedrock ----- [Symbol]
 - Lode indicated thus: ----- [Symbol]
 - Placers ----- [Symbol]

Based on Plan by P.B. Nye in 1928.



Geological Sketch Section on Line A B
Scale = 20 Chs to 1 inch



Sketch Plan of Osmiridium Lode
Scale = 4 Chains to 1 inch

DEPARTMENT OF MINES, TASMANIA.	
Field work by <i>P. B. Nye, D.S.C.</i>	Gov ^t Geologist.
Plan by <i>Max Roche</i>	Draughtsman.
Approved <i>[Signature]</i>	Director of Mines.
Date <i>[Blank]</i>	Plan N ^o <i>9/222</i>

9/842

42/73