

8433

KING ISLAND
SCHEELITE MINE

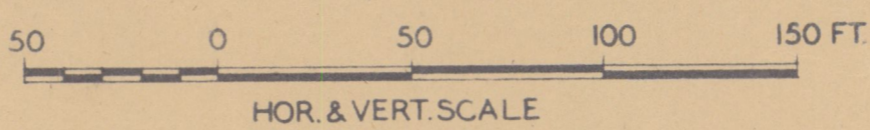
7717

7717

GEOLOGICAL SECTIONS KING ISLAND SCHEELITE MINE

NO. 1 - 6 LINES

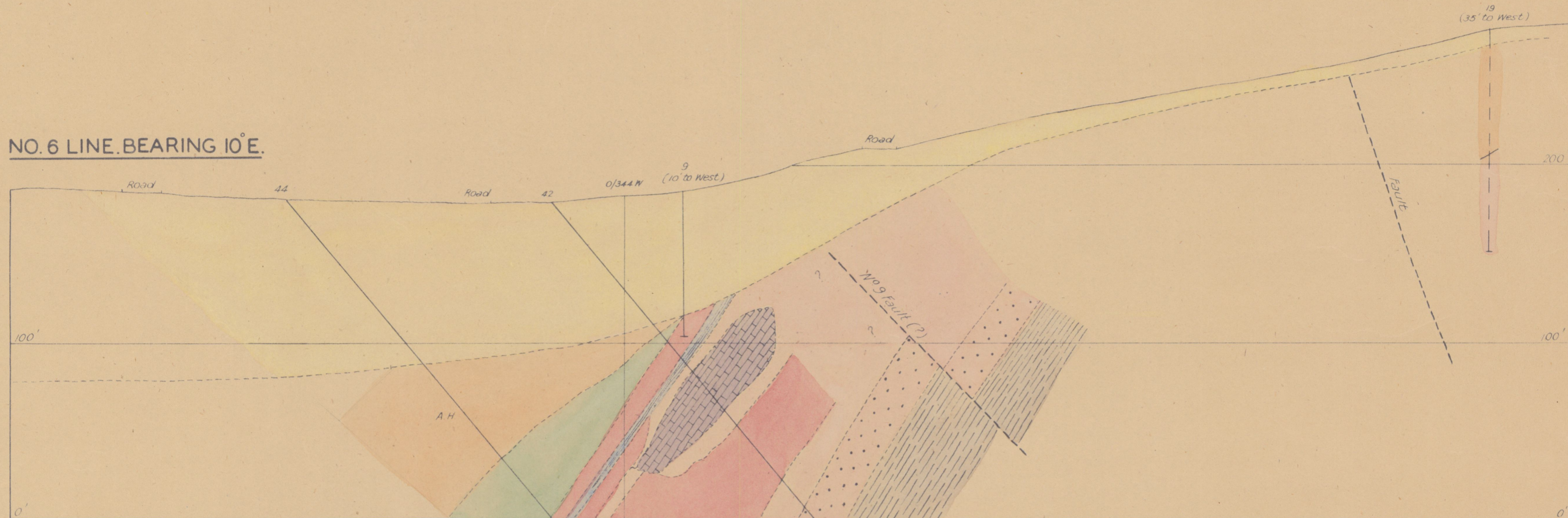
FOR POSITION OF SECTION LINES IN PLAN SEE PLATES 2 & 3.



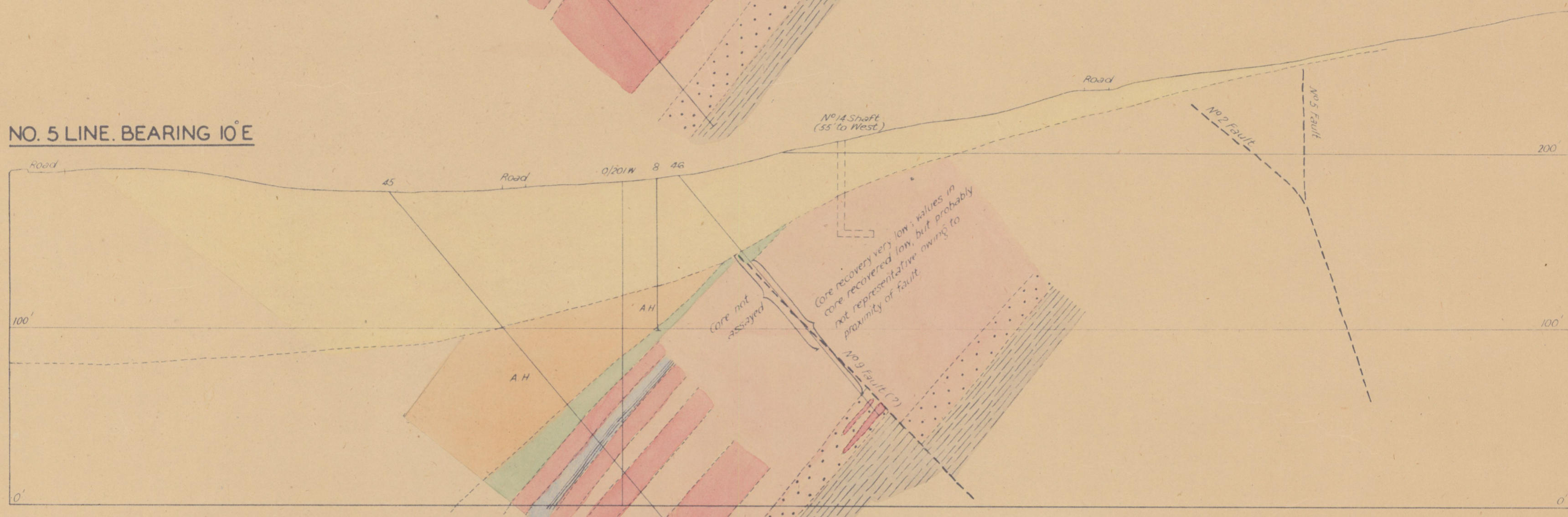
REFERENCE

- | | | | |
|--|---|--|--|
| | Debris | | Muscovite-hornfels |
| | Sand, gravel, alluvium, etc. | | WO ₃ > 0.3% Definite in drillholes & in adits, inferred elsewhere |
| | Granite, porphyry, aplite | | WO ₃ < 0.3% inferred elsewhere |
| | Biotite-actinolite-hornfels, biotite-hornfels | | Quartz-scheelite vein |
| | Actinolite-hornfels - massive hangingwall type | | Geological boundary - definite |
| | Pyroxene-garnet-hornfels - hangingwall type | | ditto - inferred |
| | Chiefly garnet-hornfels, garnet-pyroxene-hornfels, pyroxene-hornfels (constituting the ore zones) | | Fault - definite |
| | Spotted calcite-hornfels, pyroxene-hornfels & biotite-quartzite (marker beds) | | ditto - inferred |
| | Biotite-quartzite | | Drillhole - inclined |
| | Calcite-hornfels | | ditto - vertical |
| | Thin-bedded actinolite-hornfels & biotite-actinolite-hornfels - footwall rocks | | Adit, cross cut |
| | ditto with bands of garnet-pyroxene-hornfels, etc. | | 170° 170° Bench |

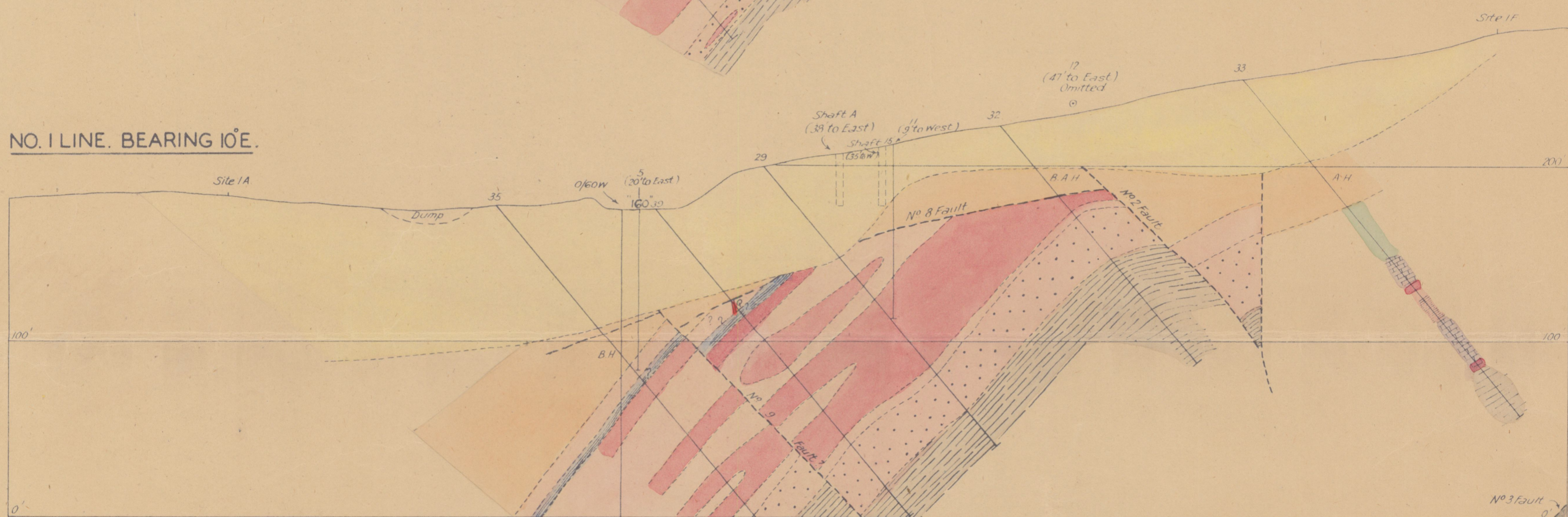
NO. 6 LINE, BEARING 10° E.



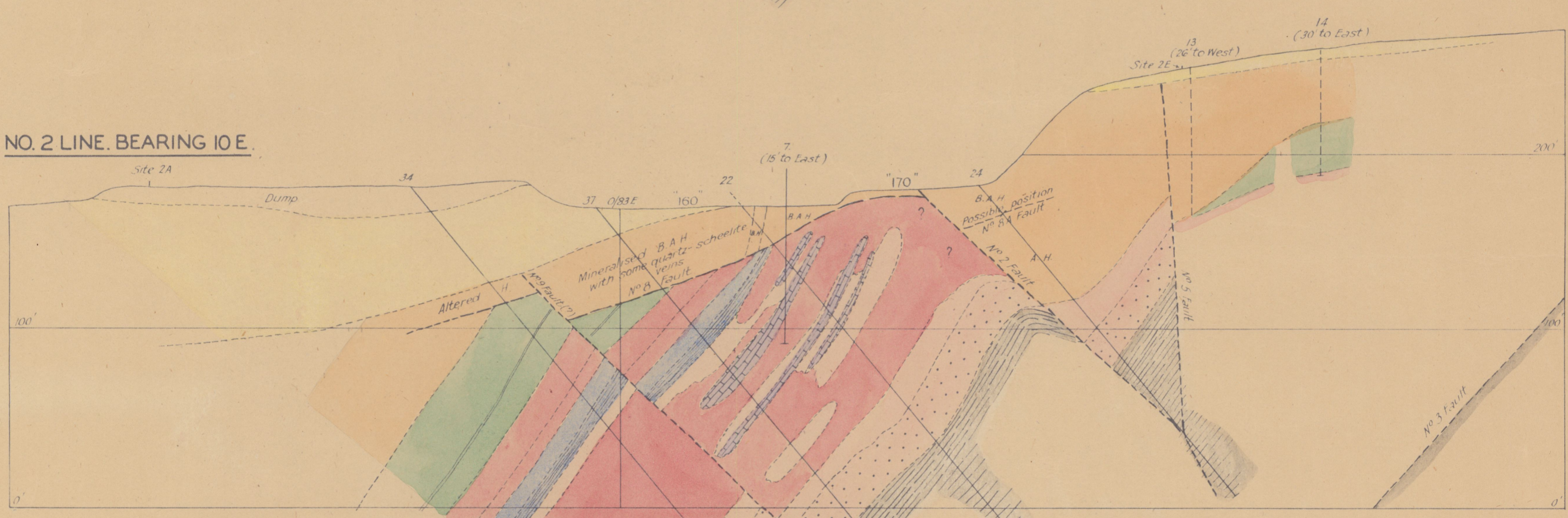
NO. 5 LINE, BEARING 10° E.



NO. 1 LINE, BEARING 10° E.



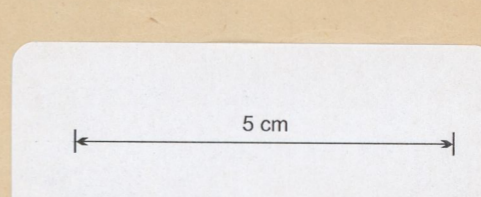
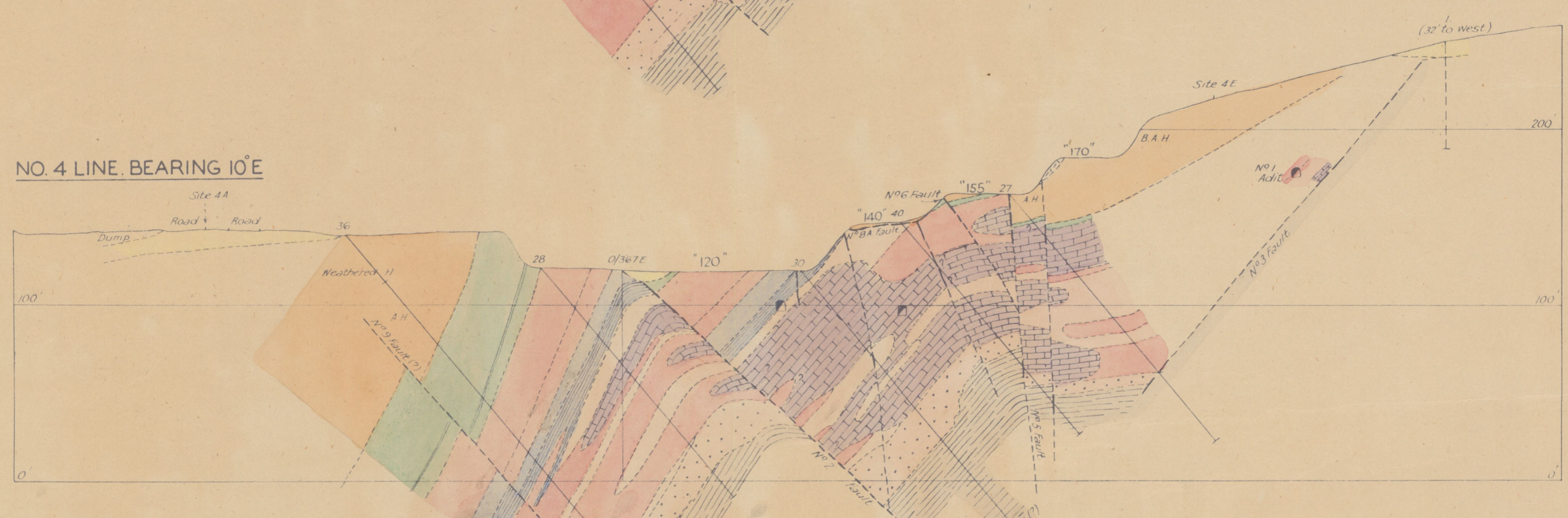
NO. 2 LINE, BEARING 10° E.



NO. 3 LINE, BEARING 10° E.



NO. 4 LINE, BEARING 10° E.



P. B. C. J. C. Assistant Director
Mineral Resources
19th Sept 1959