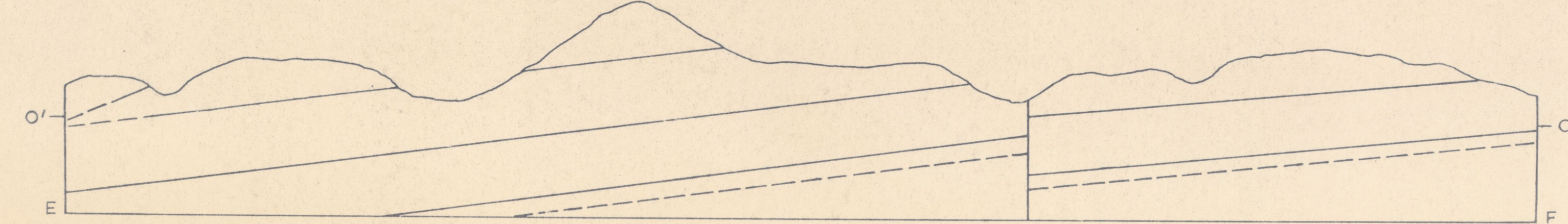
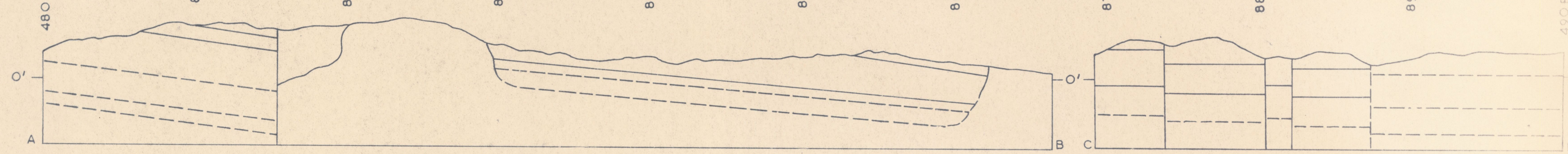


GEOLOGY OF TASMANIA

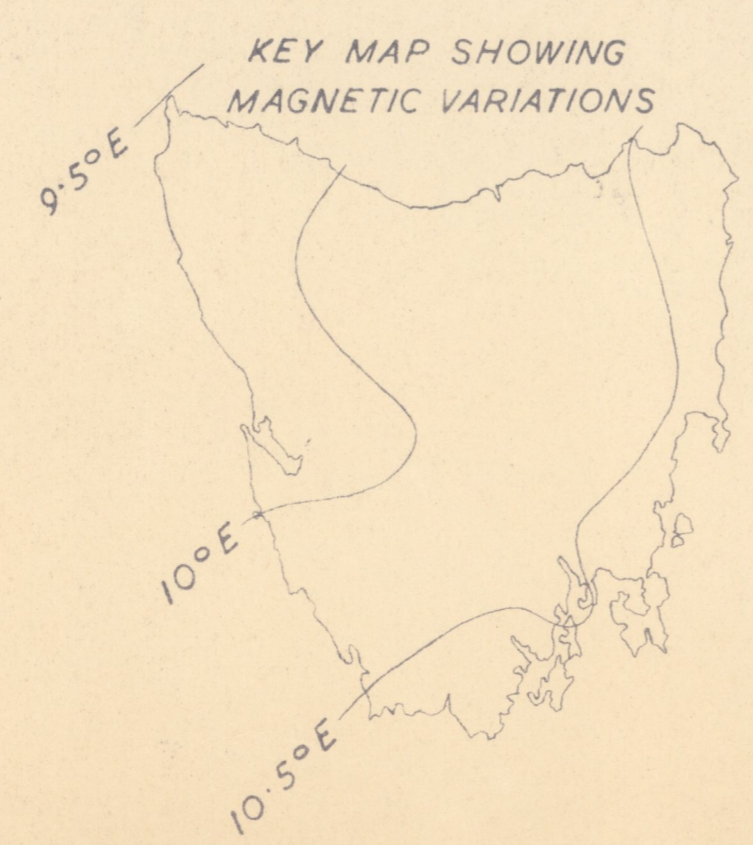
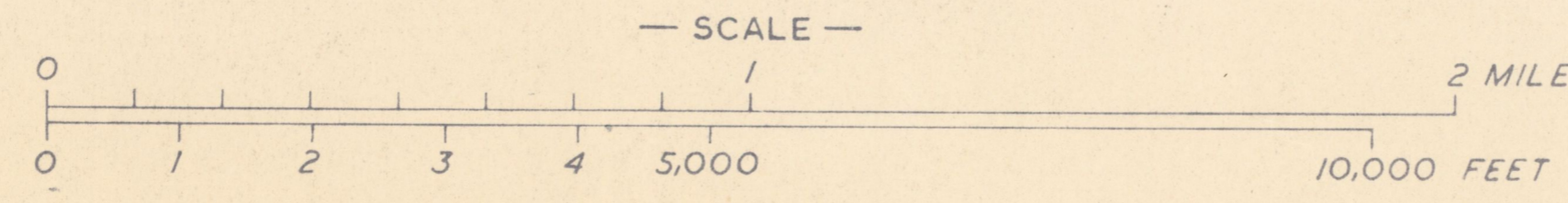
GLENDIEVE

48-67

ONE INCH SERIES - UNIVERSITY OF TASMANIA, GEOLOGY DEPARTMENT.



- FAULT WITH DOWNTHROW SIDE INDICATED
- - - FAULT - POSITION APPROXIMATE
- ? - FAULT INFERRED
- FORMATION BOUNDARY
- DOLERITE BOUNDARIES
- CONCORDANT SILL
- DISCORDANT INTRUSIVE BOUNDARIES
- DISCORDANT INTRUSIVE BOUNDARIES WITH CONCOMITANT FAULTING
- VERTICAL JOINTS
- STRIKE AND DIP
- ROADS
- VEHICULAR TRACK
- TRACK
- TRAMWAY
- DISUSED TRAMWAY
- HORIZONTAL CONTROL STATION



Compilation from Aerial Photographs.
Trigonometric Station Control by courtesy Lands and Surveys Dept.
Origin of coordinates 400,000 yds. West and 1,800,000 yds. South of True Origin of Zone 7.

MAPPED AND COMPILED BY
R J FORD JANUARY 1952

- Quaternary System
- RECENT SERIES
- Qra ALLUVIUM
- Triassic System
- Rf FELSPATHIC SANDSTONE
- Rk KNOCKLOFTY SANDSTONE AND SHALE
- Permian System
- Pf FERN TREE MUDSTONE
- Pw WOODBRIDGE GLACIAL FORMATION
- Pge GRANGE MUDSTONE
- Jurassic System
- Jdl DOLERITE
- sy SYENITE PORPHYRY

