

GEOLOGY OF TASMANIA

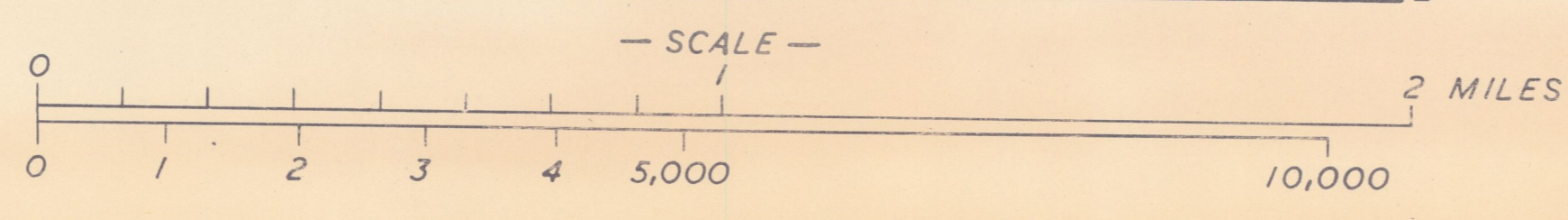
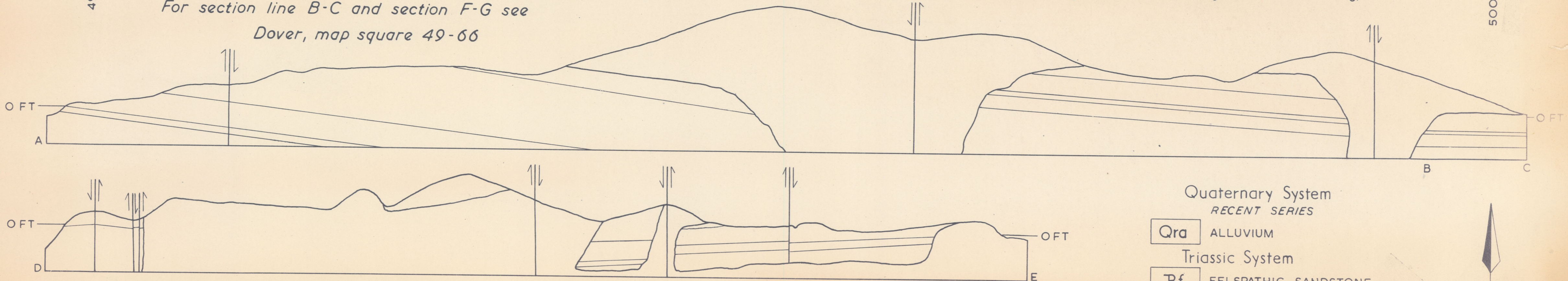
POLICE POINT

49-

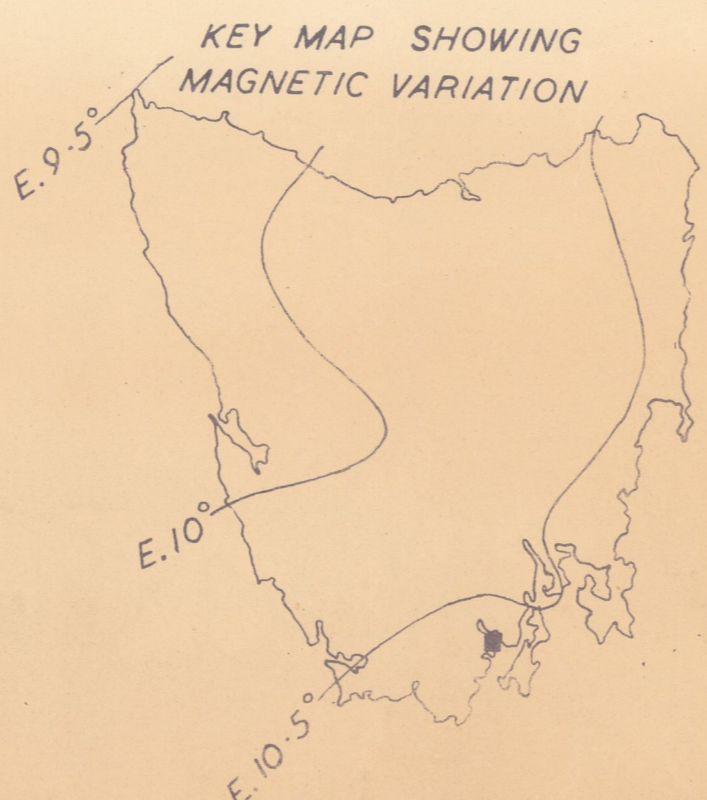
ONE INCH SERIES - UNIVERSITY OF TASMANIA, GEOLOGY DEPARTMENT.



For section line B-C and section F-G see
Dover, map square 49-66



- FAULT WITH DOWNTROW SIDE INDICATED
- - - FAULT - POSITION APPROXIMATE
- ? - FAULT INFERRED
- FORMATION BOUNDARY
- DOLERITE BOUNDARIES
- CONCORDANT SILL
- DISCORDANT INTRUSIVE BOUNDARIES
- DISCORDANT INTRUSIVE BOUNDARIES WITH CONCOMITANT FAULTING
- JOINTS
- STRIKE AND DIP
- ROADS
- VEHICULAR TRACK
- TRACK



Compilation from Aerial Photographs.
Trigonometric Station Control by
courtesy Lands and Surveys Dept.
Origin of coordinates 400,000 yds.
West and 1,800,000 yds. South of
True Origin of Zone 7

MAPPED AND COMPILED BY
G E HALE JANUARY 1952

- Quaternary System
RECENT SERIES
- Qra ALLUVIUM
- Triassic System
- Rf FELSPATHIC SANDSTONE
- Rk KNOCKLOFTY SANDSTONE
- Permian System
- Pf FERN TREE MUDSTONE
- Pw WOODBRIDGE GLACIAL FORMATION
- Pge GRANGE MUDSTONE
- Jurassic System
- Jdl DOLERITE
- sy SYENITE