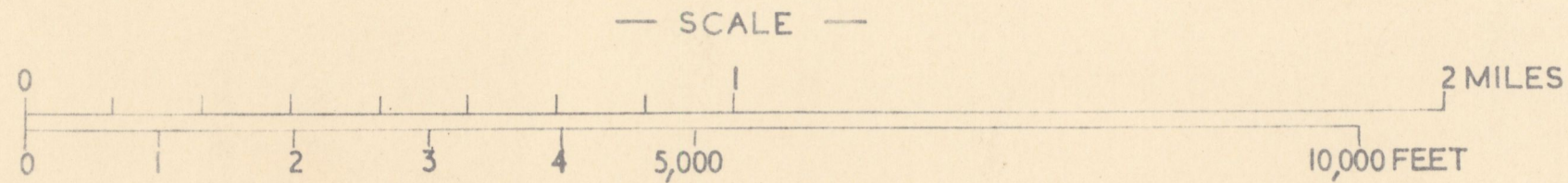


—LEGEND—

- FAULT WITH DOWNTROW SIDE INDICATED
- FAULT—POSITION APPROXIMATE
- ?— FAULT INFERRED—STRUCTURAL OR PHOTO INTERPRETATION
- FORMATION BOUNDARY
- CONCEALED BOUNDARY—POSITION APPROXIMATE
- DOLERITE BOUNDARIES
- CONCORDANT SILL
- DISCORDANT INTRUSIVE BOUNDARIES
- DISCORDANT INTRUSIVE BOUNDARIES WITH CONCOMITANT FAULTING
- 10° VERTICAL JOINTS
- STRIKE AND DIP
- ROADS
- VEHICULAR TRACK
- TRACK
- QUARRY
- AXIS OF MAJOR FOLD—POSITION APPROXIMATE
- TOP OF BED INDICATED BY GRAINSIZE
- VEIN
- BRECCIATED ZONE
- ROCK FLOW

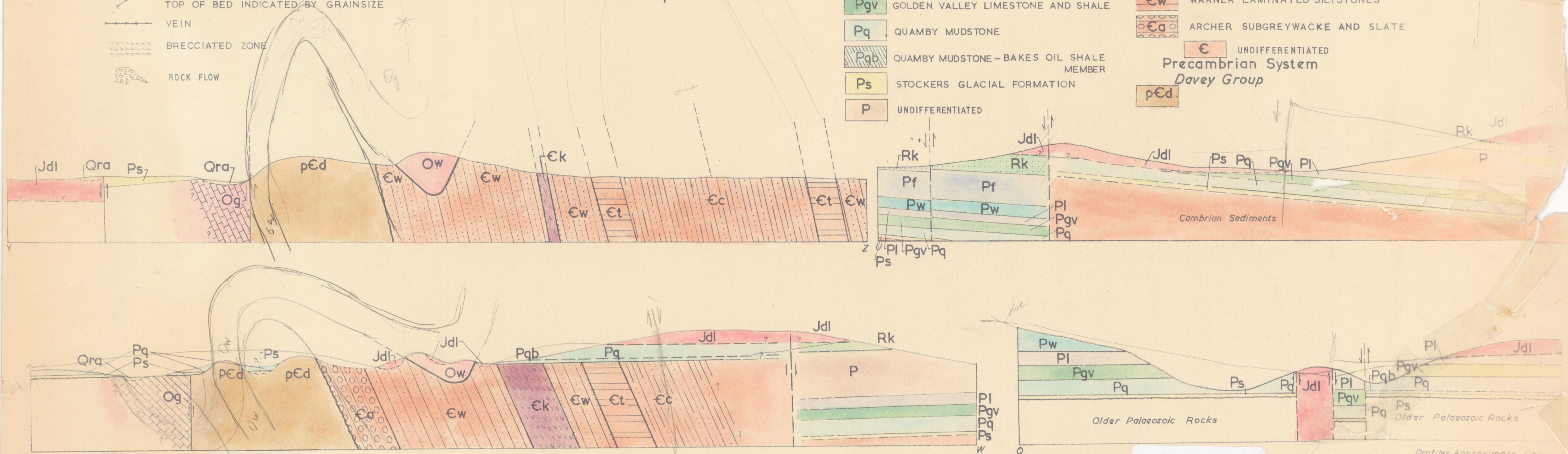


Compilation from Aerial Photographs.
Trigonometric Station Control by
courtesy Forestry Department. Co-
ordinates referred to false Origin
400,000 yards West and 1,800,000 yards
South of the True Origin of Zone 7
and are applicable to maps of
Tasmania only.

Golden Valley Sections
Mapped and Compiled by A.T.Wells.
February 1954.

- Quaternary System**
Recent Series
- Qra ALLUVIUM
 - Qrt TALUS
- Jurassic System**
- Jdl DOLERITE
- Triassic System**
- Rk KNOCKLOFTY SANDSTONE AND SHALE
- Permian System**
- Pf FERTREE MUDSTONE
 - Pw WOODBRIDGE GLACIAL FORMATION
 - Pl LIFFEY SANDSTONE
 - Pgv GOLDEN VALLEY LIMESTONE AND SHALE
 - Pq QUAMBY MUDSTONE
 - Pqb QUAMBY MUDSTONE—BAKES OIL SHALE MEMBER
 - Ps STOCKERS GLACIAL FORMATION
 - P UNDIFFERENTIATED

- Ordovician System**
June Group
- Og GORDON RIVER LIMESTONE
 - Ow WEST COAST RANGE CONGLOMERATE
- Cambrian System**
Dundas Group
- Ec CALSTOCK SLATES AND SUBGREYWACKES
 - Et THOMPSON SLATES AND GREYWACKES
 - Ek KENTISH SPILITE AND VOLCANIC BRECCIA
 - Es SCOTT QUARTZ KERATOPHYRE
 - Ew WARNER LAMINATED SILTSTONES
 - Ea ARCHER SUBGREYWACKE AND SLATE
 - E UNDIFFERENTIATED
- Precambrian System**
Davey Group
- pCd



1/4 about 1:2

Profiles Approximate Only

M125A