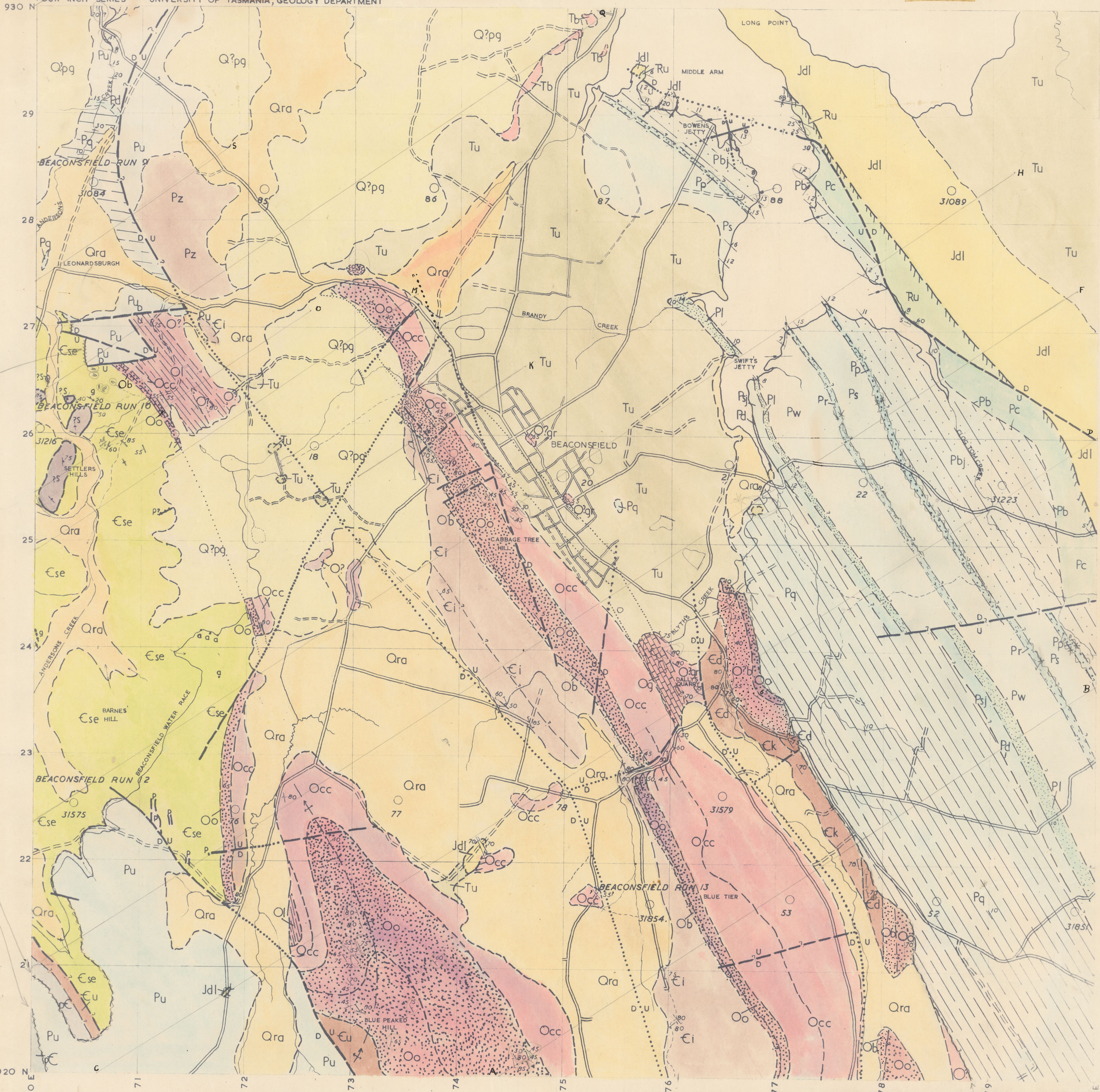


GEOLOGY OF TASMANIA

BEACONSFIELD

FOUR INCH SERIES — UNIVERSITY OF TASMANIA, GEOLOGY DEPARTMENT



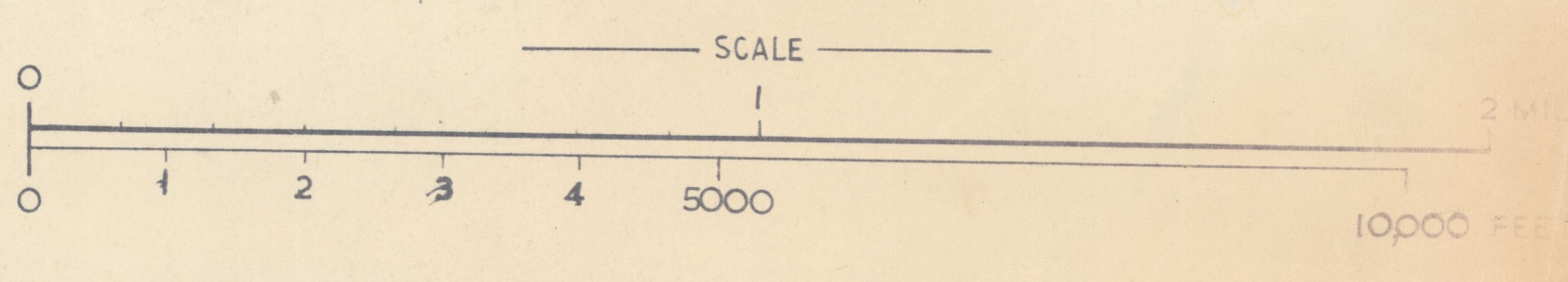
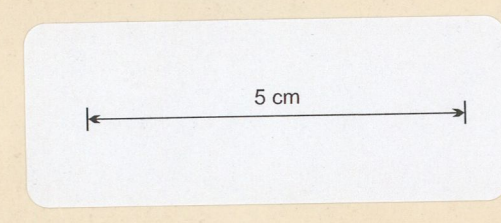
- FORMATION BOUNDARY
- - - FORMATION BOUNDARY, POSITION APPROXIMATE
- · - · - FORMATION BOUNDARY INFERRED
- · · · · CONCEALED FORMATION BOUNDARY
- · · · · CONCEALED FORMATION BOUNDARY INFERRED
- IGNEOUS CONTACT
- FAULT
- x 55 STRIKE AND DIP OF BEDDING
- x 75 CLEAVAGE
- x 70 JOINTS
- x 60 SCHISTOSITY
- x 35 LINATION—ORIENTATED PYROXENITE
- x BANDING IN SERPENTINE
- x + ANTICLINAL CREST, POSITION APPROXIMATE
- x - SYNCLINAL TROUGH, POSITION APPROXIMATE
- x DYKE

- Quaternary System**
- RECENT SERIES**
- Qra ALLUVIUM
- PLEISTOCENE? SERIES**
- Q?pg QUARTZ GRAVELS
- Tertiary System**
- Tu UNDIFFERENTIATED CLAYS, SANDS AND CONGLOMERATES
- Triassic System**
- Ru UNDIFFERENTIATED SANDSTONES
- Permian System**
- Pc CLOG TOM SANDSTONE
 - Pb BLACKWOOD CONGLOMERATE
 - Pbj BOWENS JETTY SANDSTONE
 - Ppj PALMER SANDSTONE
 - Ps SPRINGMOUNT SILTSTONE
 - Pr RISDON SANDSTONE
 - Pw WOODBRIDGE GLACIAL FORMATION
 - Pi LIFFEY SANDSTONE
 - Psj SWIFTS JETTY SANDSTONE
 - Pd DARLINGTON LIMESTONE
 - Pq QUAMBY SILTSTONE
 - Pa UNDIFFERENTIATED

- Ordovician System**
- Ogr GRUBB SANDSTONE AND SLATE
 - Og JUNEE GROUP
 - Oli GORDON LIMESTONE
 - Oli LEONARDSBURGH SILTSTONE
 - Ocd CAROLINE CREEK SANDSTONE
 - Oo OWEN CONGLOMERATE
 - Oob BLYTH'S CREEK SANDSTONE, GRIT AND LIMESTONE
- Cambrian System**
- Ed DALLYS SILTSTONE
 - Ei ILFRACOMBE SLATE AND SANDSTONE
 - Eu UNDIFFERENTIATED
 - Pz UNDIFFERENTIATED LOWER PALAEOZOIC SEDIMENTS
 - pc UNDIFFERENTIATED PRE-CAMBRIAN
- METAMORPHIC ROCKS**
- ?sh SIMMONDS HILL METAMORPHICS
 - ?s SETTLERS BIOTITE SCHIST

- IGNEOUS ROCKS**
- Tb TERTIARY BASALT
 - Jdl JURASSIC? DOLERITE
 - g CAMBRIAN? GABBRO AND DOLERITE
 - g GABBRO AND DOLERITE
 - hg HORNBLENDE GABBRO
 - p GABBROIC PEGMATITE
 - Ese CAMBRIAN SERPENTINITE AND PYROXENITE
 - EK CAMBRIAN KERATOPHYRE

Compilation from Aerial Photographs
 Base Map by courtesy of the Forestry Commission, Hobart.
 Origin of co-ordinates 400,000 yds. West and 1800,000 yds South of the True Origin of Zone 7 of the International Grid.



MAPPED AND COMPILED BY
 D. H. GREEN, 1956.

This line is an approximation (see legend) as far as shown