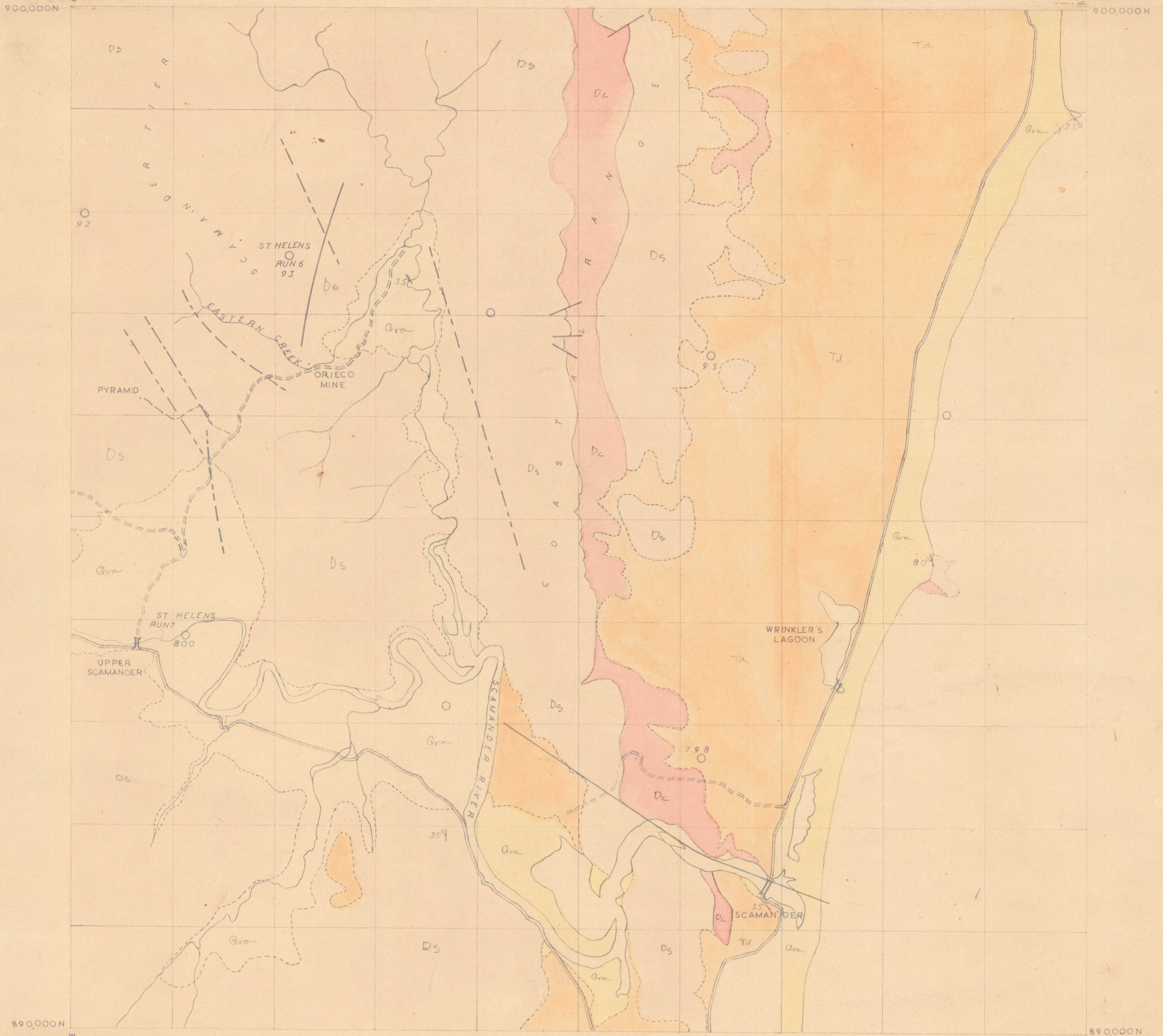
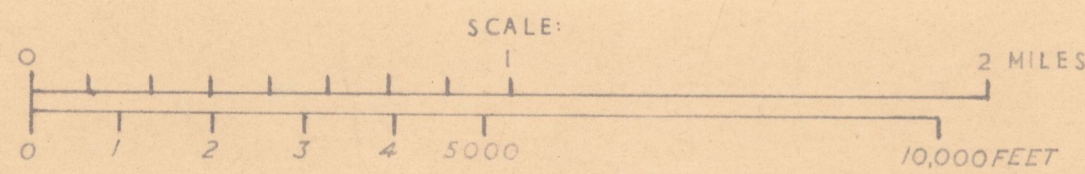


SCAMANDER

7-K. 41



- FAULT WITH DOWNTHROW SIDE INDICATED
- - - PHOTO-INTERPRETED LINEAR-FAULT INFERRED
- ESTABLISHED BOUNDARY-POSITION ACCURATE
- - - ESTABLISHED BOUNDARY-POSITION APPROXIMATE
- STRIKE AND DIP
- ROADS
- ==== VEHICULAR TRACK
- - - TRACK
- BRIDGE



Compilation from Aerial Photographs
Trigonometric Station Control by
courtesy Lands and Surveys Dept.
Origin of coordinates 400,000 yds
West and 1800,000 yds South of
True Origin of Zone 7.

MAPPED AND COMPILED BY
K R WALKER March 1953

- QUATERNARY SYSTEM
- RECENT SERIES
- Gra ALLUVIUM
- PLEISTOCENE SERIES
- Tel ST-HELENS CLAYS & GRAVELS
- TERTIARY SYSTEM
- Tel DIANA'S BASIN SANDS & GRAVELS
- MATHINNA GP?
- Ds SCAMANDER SLATE & QUARTZITE
- IGNEOUS ROCKS
- Dc COASTAL RANGE QUARTZ MONZONITE

