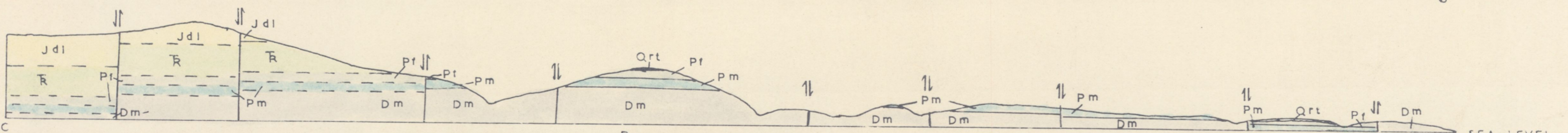
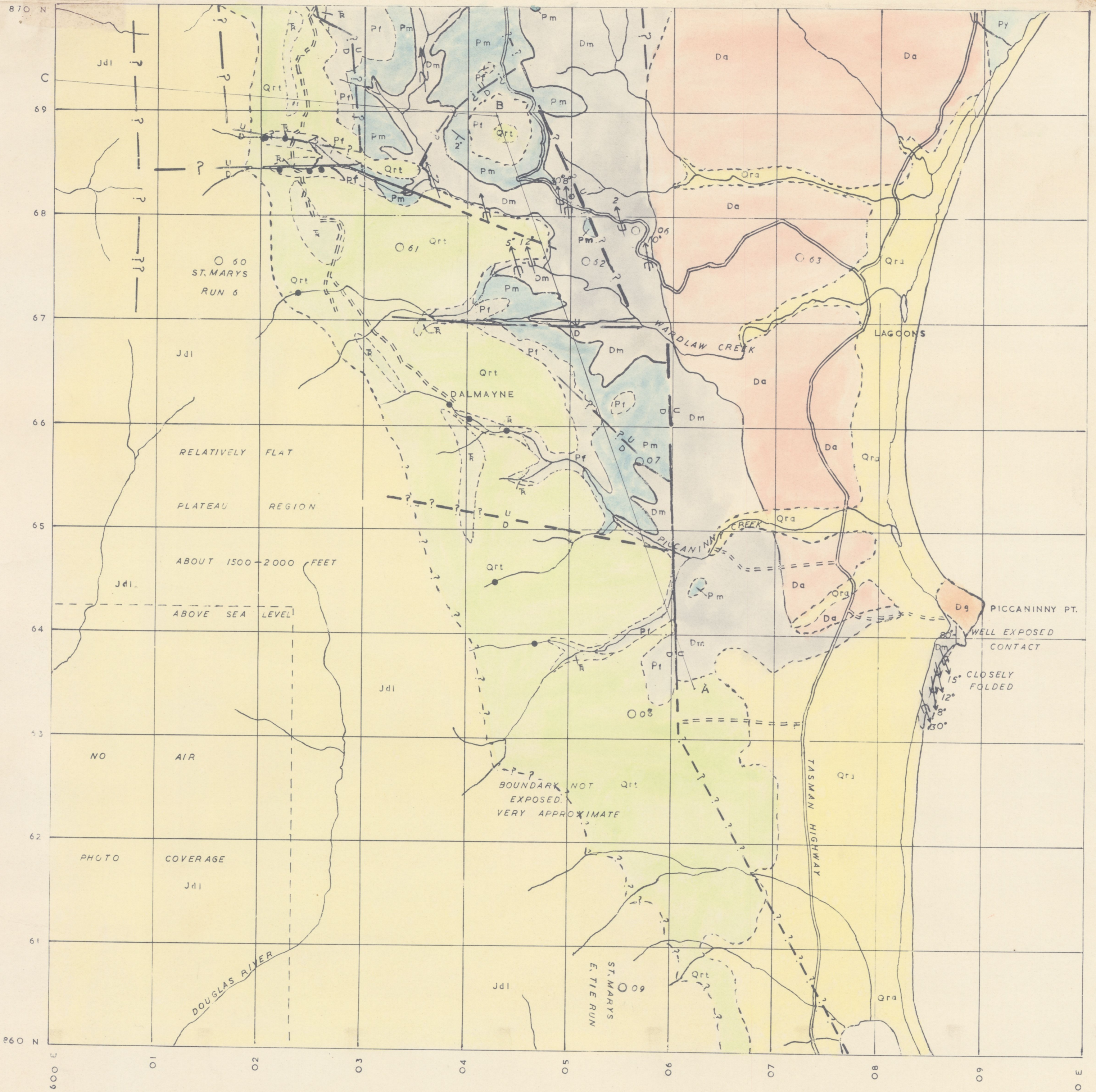


GEOLOGY OF TASMANIA

PICCANINNY POINT

6086

ONE INCH SERIES—UNIVERSITY OF TASMANIA GEOLOGY DEPARTMENT



LEGEND

- U— FAULT WITH DOWNTHROWN SIDE INDICATED
- FAULT --- POSITION APPROXIMATE
- ?-? FAULT INFERRED
- FAULT CONCEALED
- BOUNDARY --- POSITION ACCURATE
- BOUNDARY --- POSITION APPROXIMATE
- ?-?-? BOUNDARY INFERRED
- COAL OUTCROP
- 30° STRIKE AND DIP
- TREND OF MINOR FOLD AXIS
- == ROAD
- == TRACK

- Quaternary System**
- RECENT SERIES*
- Qra ALLUVIUM
- Qrt DOLERITE TALUS
- Triassic System**
- R FELDSPATHIC SANDSTONE
- Permian System**
- Pt FERNTREE MUDSTONE AND BERRIEDALE LIMESTONE
- Pm GRAY SILTSTONE & SANDSTONE, MT ELEPHANT SANDSTONE AND WARDLAW CONGLOMERATE
- Silurian-Devonian System**
- Dm MATHINNA BEDS
- IGNEOUS ROCKS**
- Jurassic System**
- Jd1 DOLERITE
- Devonian System**
- Py ST. MARYS PORPHYRY
- Da ADAMELLITE
- Dg GRANODIORITE

Compilation from aerial photographs.
Trigonometric Station Control by
courtesy of the Department of Lands
and Surveys. Origin of co-ordinates
400,000 yds West and 1,800,000
yds South of True Origin of Zone 7

MAPPED AND COMPILED BY
R.D. McNEIL 1959

