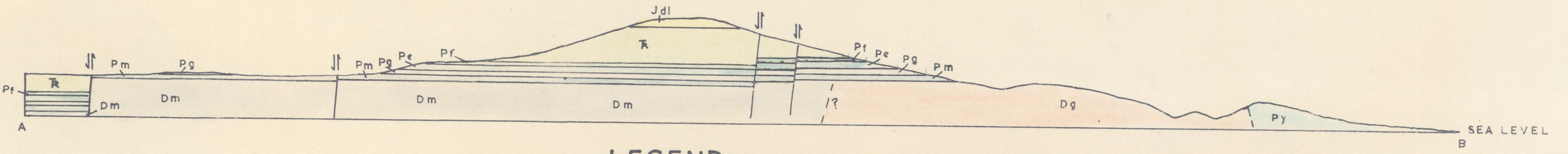
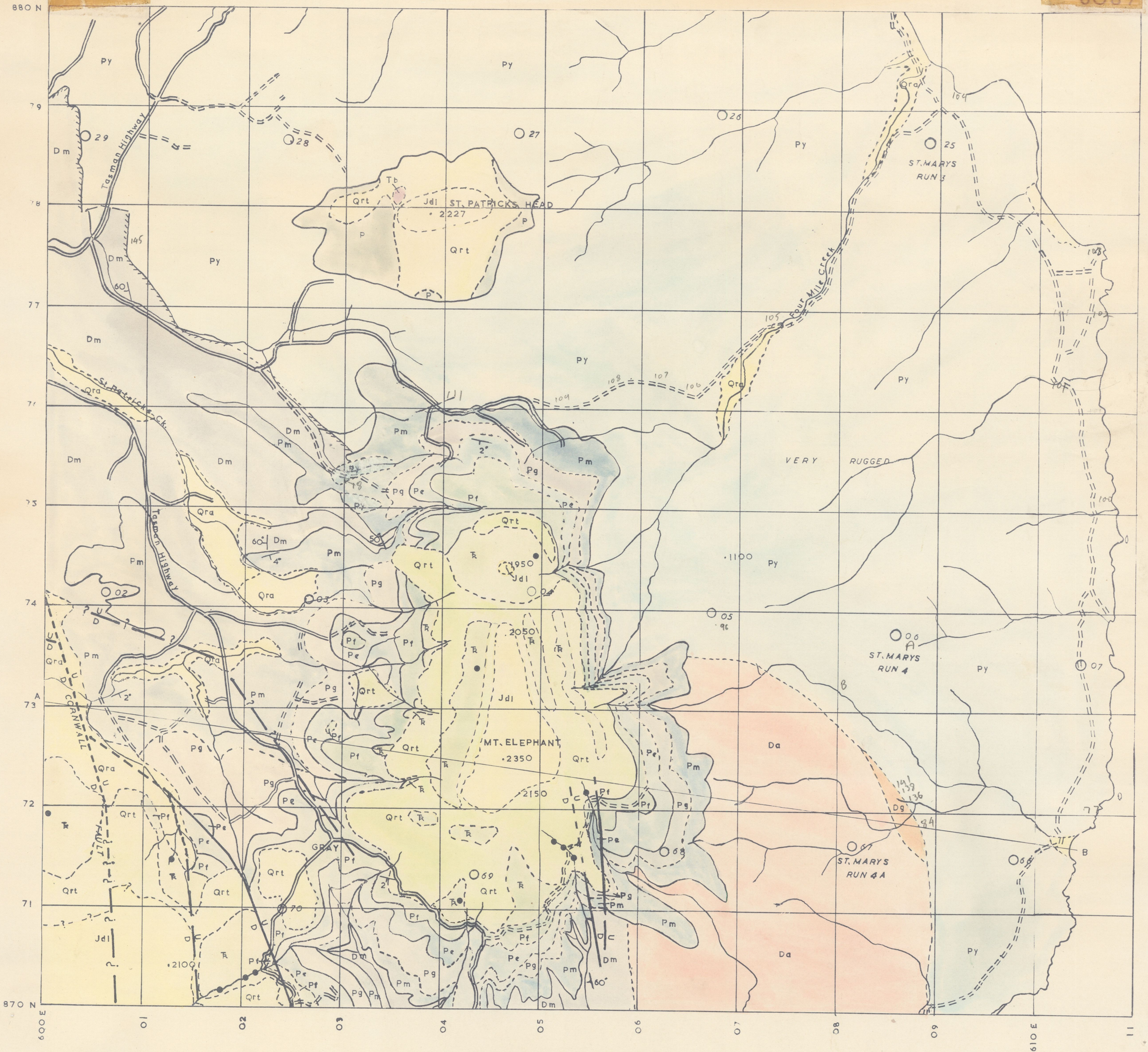


GEOLOGY OF TASMANIA

MT ELEPHANT

ONE INCH SERIES — UNIVERSITY OF TASMANIA GEOLOGY DEPARTMENT

6087



LEGEND

- U — FAULT WITH DOWNTHROWN SIDE INDICATED
- D — FAULT — POSITION APPROXIMATE
- ? — FAULT INFERRED
- FAULT CONCEALED
- BOUNDARY — POSITION ACCURATE
- - - BOUNDARY — POSITION APPROXIMATE
- /// DISCORDANT INTRUSIVE BOUNDARY

- 50° — STRIKE AND DIP
- — COAL OUTCROPS
- ROAD
- == TRACK

Jurassic System

- Jdl — DOLERITE
- Py — ST MARYS PORPHYRY
- Da — ADAMELLITE
- Dg — GRANODIORITE

Quaternary System
RECENT SERIES

- Qra — ALLUVIUM
- Qrt — DOLERITE TALUS

Triassic System

- R — FELDSPATHIC SANDSTONE

Permian System

- Pf — FERNTREE MUDSTONE
- Pe — BERRIDALE LIMESTONE
- Pg — GRAY SILTSTONE
- Pm — MT ELEPHANT SANDSTONE
- P — PERMIAN-UNDIFFERENTIATED

Silurian-Devonian System

- Dm — MATHINNA BEDS

IGNEOUS ROCKS

- Tertiary System
- Tb — BASALT

Compilation from aerial photographs. Trigonometric Station Control by courtesy of the Department of Lands and Surveys. Origin of co-ordinates 400000 yds West and 1800000 yds South of True Origin of Zone 7

MAPPED AND COMPILED BY R. D. MCNEIL 1959

