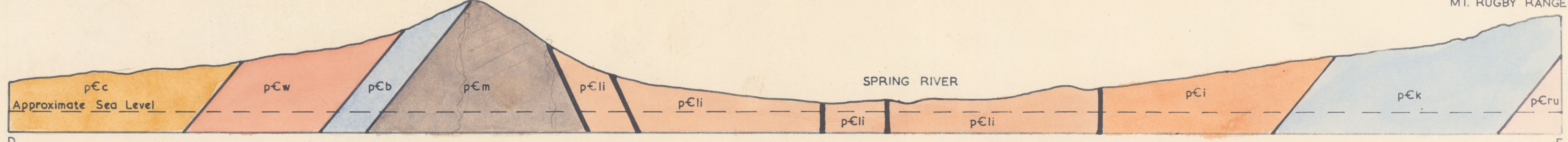
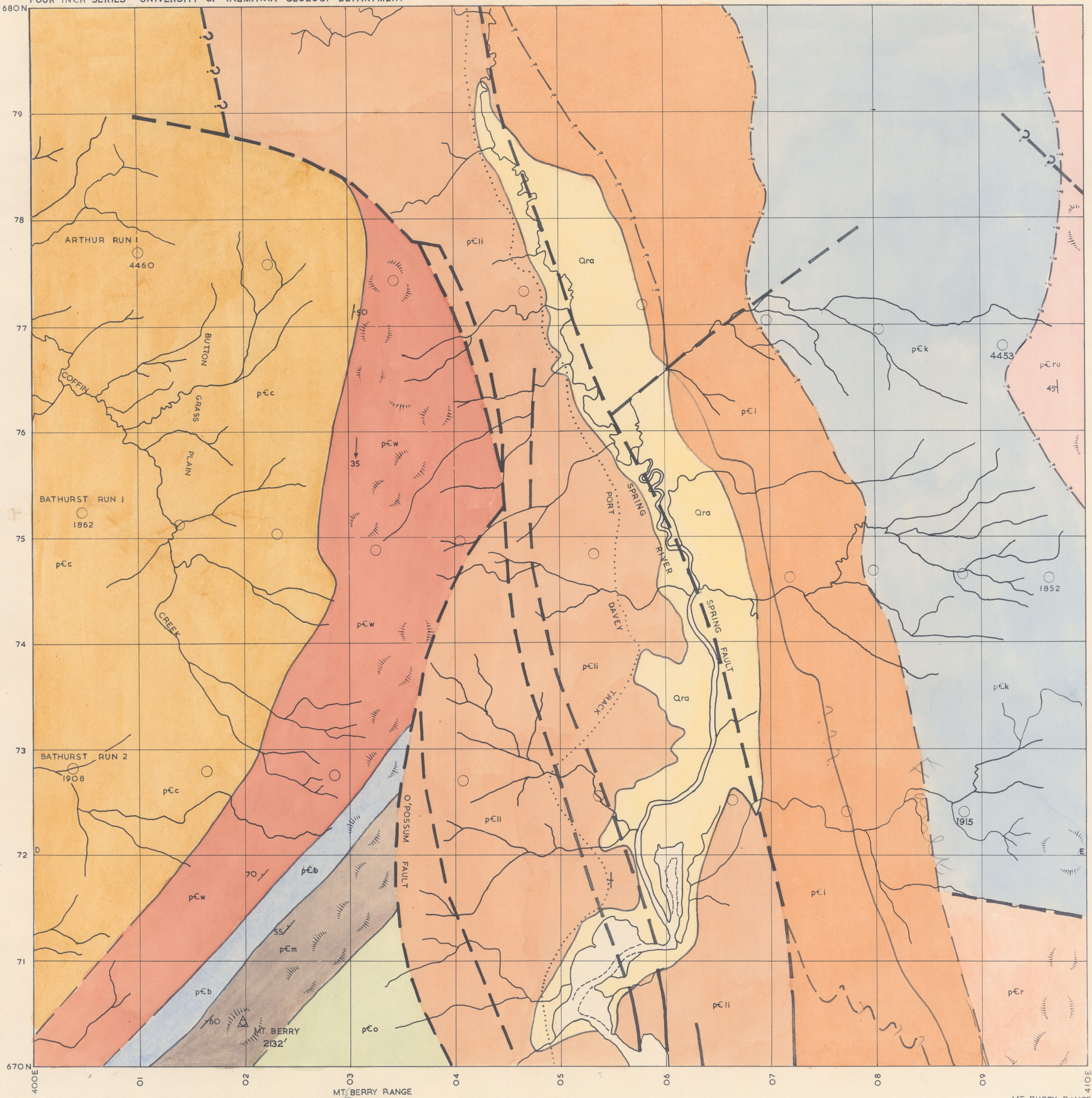


GEOLOGY OF TASMANIA

SPRING RIVER

4067

FOUR INCH SERIES UNIVERSITY OF TASMANIA GEOLOGY DEPARTMENT



- FAULT
- - - FAULT POSITION APPROX.
- ? - FAULT INFERRED
- FORMATION BOUNDARY
- - - FORMATION BOUNDARY APPROX.
- ? - FORMATION BOUNDARY INFERRED
- STRIKE & DIP
- ← DIRECTION & PLUNGE OF LINEATION
- STRIKE & DIP OF CLEAVAGE
- TRACK

- Qra ALLUVIUM
- Davey Group
- pCc COFFIN QUARTZITE
- pCw WESTERN QUARTZITE
- pCb BERRY QUARTZITE
- pEm MACKENZIE CONGLOMERATE
- pCo O'POSSUM CONGLOMERATE
- pEi LONG BAY SHALE
- pEli LINDSAY QUARTZITE

- pEi ILA QUARTZITE & CONGLOMERATE
- pEr RUGBY CONGLOMERATE & BRECCIA
- pEba BATHURST SHALE
- pEk KING QUARTZITE
- pEru RUGGED QUARTZITE
- pEol OLD RIVER QUARTZITE & META-PELITE
- Precambrian - Position not known
- pEbr BRAMBLE QUARTZITE & META-PELITE
- pEn NORTH QUARTZITE

Compilation from Aerial Photographs.
Trigonometric Station Control by courtesy of Depts. of Lands and Surveys and the Navy. Origin of co-ordinates 400,000 yds. West and 1,800,000 yds. South of True Origin of Zone 7.

MAPPED AND COMPILED BY
W.E. BAKER - 1956/57.

