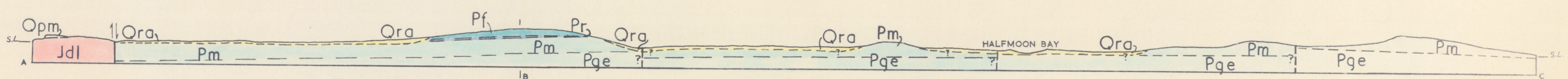
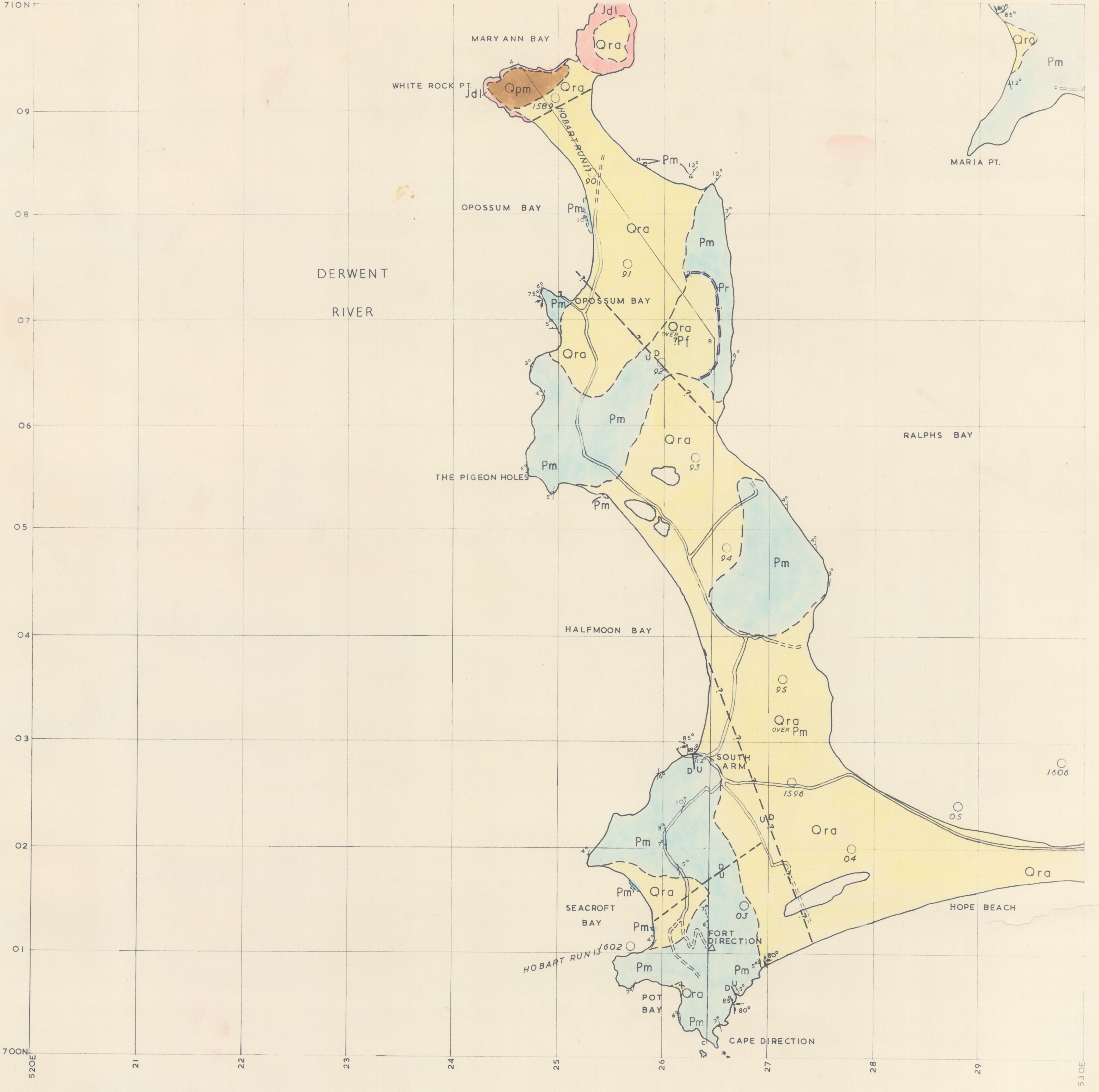


GEOLOGY OF TASMANIA

SOUTH ARM

5270

ONE INCH SERIES — UNIVERSITY OF TASMANIA, GEOLOGY DEPARTMENT

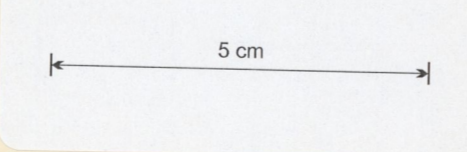


LEGEND

- FAULT CONCEALED
- FAULT-DOWNTHROWN SIDE INDICATED
- - - FAULT-POSITION APPROXIMATE
- ? - FAULT INFERRED
- FORMATION BOUNDARY
- - - FORMATION BOUNDARY-POSITION APPROXIMATE
- VERTICAL JOINTS
- 75° DIP AND STRIKE OF JOINTS
- 12° DIP AND STRIKE OF STRATA
- == ROAD
- ==== VEHICULAR TRACK

- Quaternary System
- RECENT SERIES
- Ora ALLUVIUM
- PLEISTOCENE? SERIES
- Qpm MARY ANN BAY SANDSTONE
- Permian System
- Pf FERN TREE FORMATION
- Pr RISDON SANDSTONE
- Pm MALBINA SILTSTONE AND SANDSTONE
- IGNEOUS ROCKS
- Jurassic? System
- Jdl DOLERITE

Compilation from Aerial Photographs
Trigonometrical Station Control in part
by courtesy of the Department of Lands
and Surveys Hobart.
Origin of co-ordinates 400,000yds. West
and 1,800,000yds. South of True Origin of
Zone 7 of the International Grid.



MAPPED AND COMPILED BY D.C.GREEN, 1959

