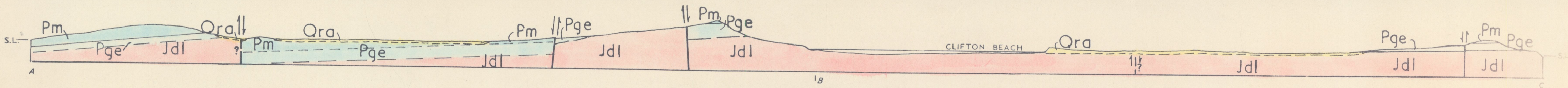
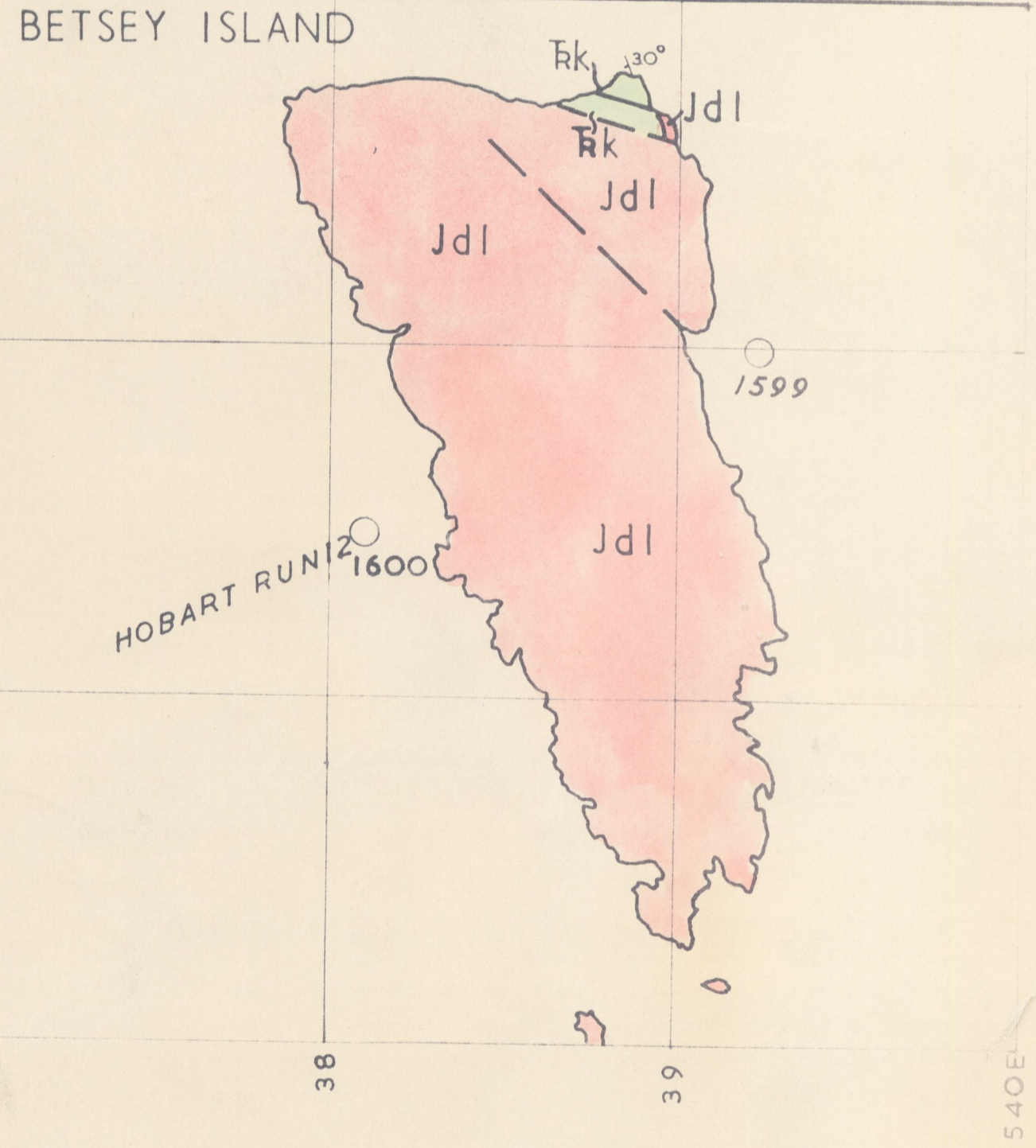
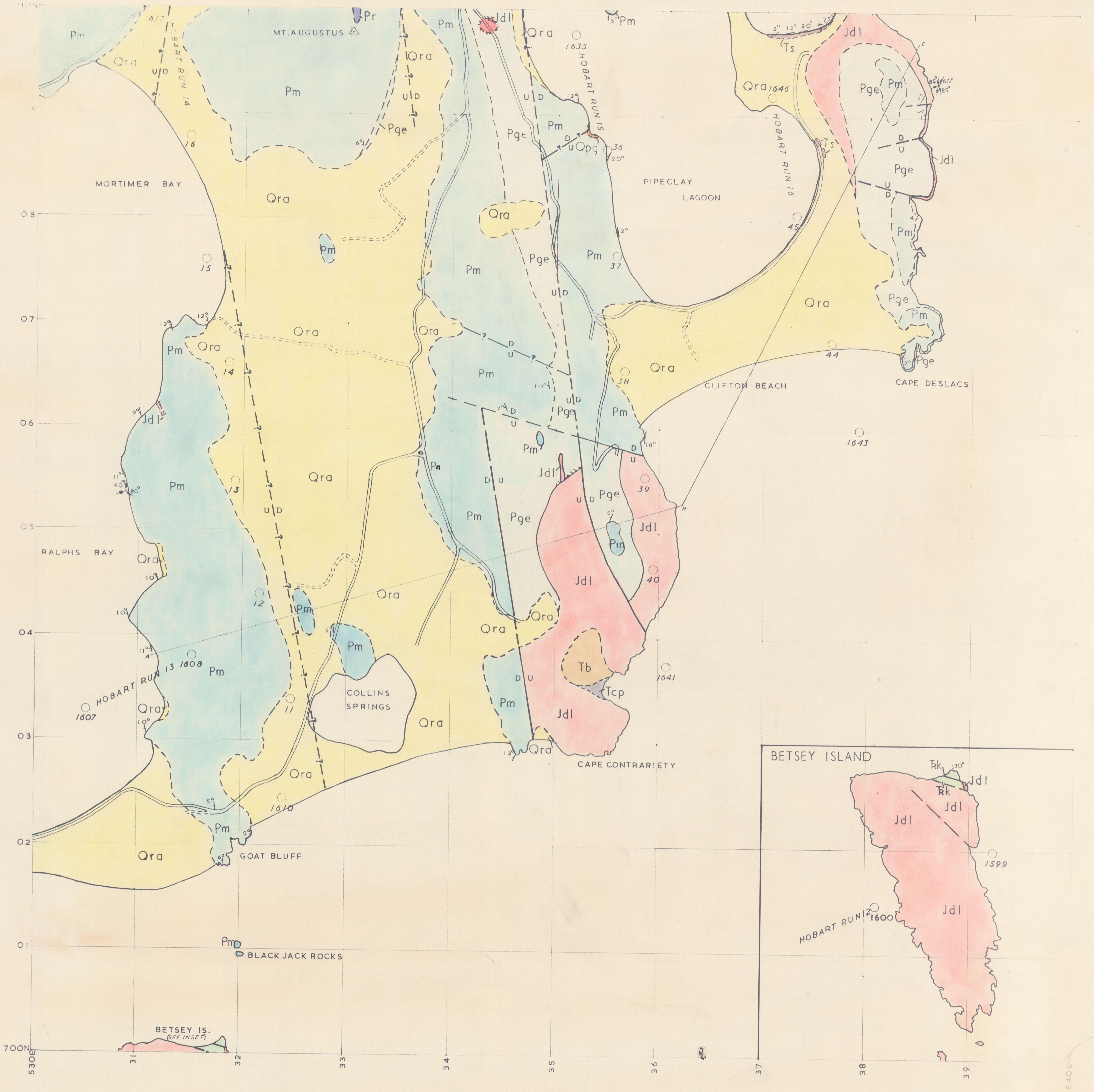


GEOLOGY OF TASMANIA

CLIFTON BEACH

5370

THE HULL SERIES — UNIVERSITY OF TASMANIA, GEOLOGY DEPARTMENT



LEGEND

- FAULT CONCEALED
- FAULT-DOWNTHROWN SIDE INDICATED
- - - FAULT-POSITION APPROXIMATE
- ? - FAULT INFERRED
- FORMATION BOUNDARY
- - - FORMATION BOUNDARY-POSITION APPROXIMATE
- Dolerite Boundaries
- CONCORDANT SILL
- ||||| DISCORDANT INTRUSIVE BOUNDARY
- VERTICAL JOINTS
- 75° DIP AND STRIKE OF JOINTS
- 12° DIP AND STRIKE OF STRATA
- == ROAD
- ==== VEHICULAR TRACK

- Quaternary System
- RECENT SERIES
- Ora ALLUVIUM
- PLEISTOCENE SERIES
- Opg SANDS AND GRAVELS
- Tertiary System
- Ts PIPECLAY LAGOON SANDS AND CLAYS
- Triassic System
- Rk KNOCKLOFTY FORMATION
- Permian System
- Pr RISDON SANDSTONE
- Pm MALBINA SILTSTONE AND SANDSTONE
- Pge GRANGE MUDSTONE
- IGNEOUS ROCKS
- Tertiary System
- Tb BASALT
- Tcp CAPE CONTRARIETY PYROCLASTICS
- Jurassic System
- Jdl DOLERITE

Compilation from Aerial Photographs  
Trigonometrical Station Control in part  
by courtesy of the Department of Lands  
and Surveys Hobart.  
Origin of co-ordinates 400000yds. West  
and 1800000yds. South of True Origin of  
Zone 7 of the International Grid.

