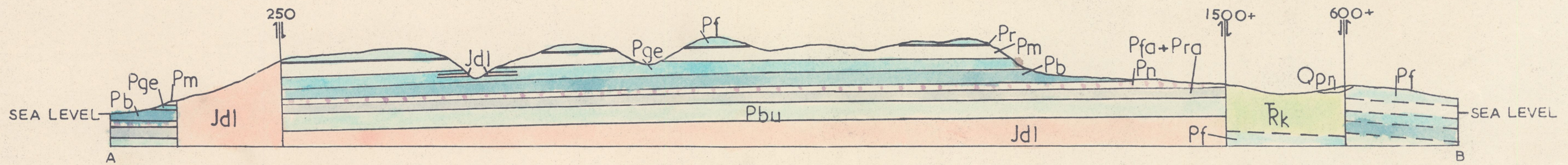
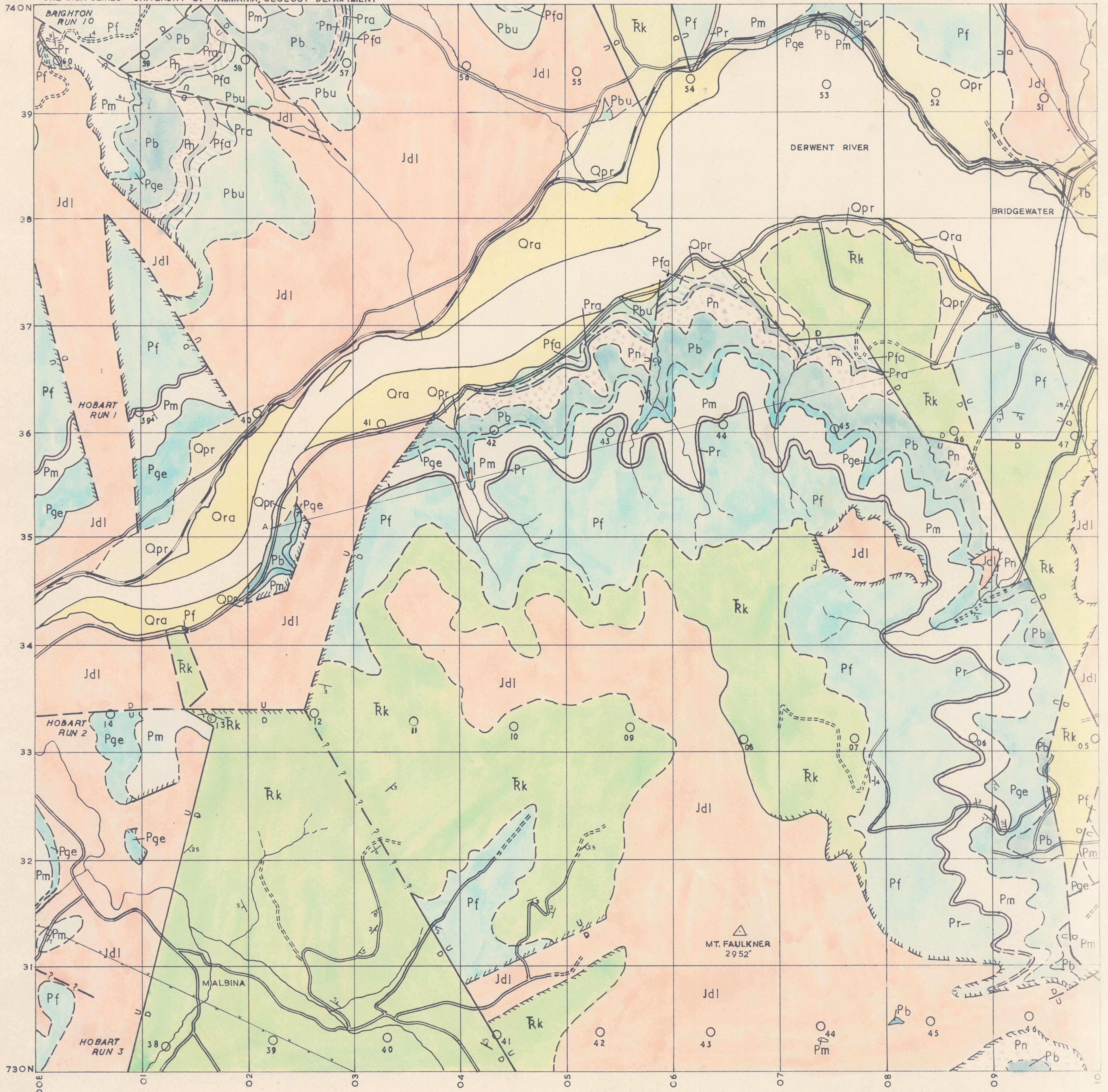


BRIDGEWATER

5073

GEOLOGY OF TASMANIA

ONE INCH SERIES UNIVERSITY OF TASMANIA, GEOLOGY DEPARTMENT



LEGEND

- FAULT WITH DOWNTHROWN SIDE INDICATED
- FAULT POSITION APPROXIMATE
- FAULT INFERRED
- FORMATION BOUNDARY
- FORMATION BOUNDARY POSITION APPROXIMATE
- Dolerite Boundaries**
- CONCORDANT SILL
- DISCORDANT INTRUSIVE BOUNDARIES
- STRIKE AND DIP OF STRATA
- ROAD
- RAILWAY LINE
- VEHICULAR TRACK
- TRANSMISSION LINE

- Quaternary System**
- RECENT SERIES**
- ALLUVIUM
- PLEISTOCENE SERIES**
- RIVER GRAVELS
- Triassic System**
- KNOCKLOFTY FORMATION
- Permian System**
- FERNTREE MUDSTONE
- RISDON SANDSTONE
- MALBINA SILTSTONE & SANDSTONE
- GRANGE MUDSTONE
- BERRIEDALE LIMESTONE
- NASSAU SILTSTONE
- RAYNER SANDSTONE
- FAULKNER GROUP

- IGNEOUS ROCKS**
- Tertiary System**
- BASALT
- Jurassic ? System**
- DOLERITE

Compilation from aerial photographs.
Trigonometric Station Control by courtesy of the Department of Lands and Surveys, Hobart.
Origin of co ordinates 400,000 yds. West and 1,800,000 yds. South of the True Origin of Zone 7 of the International Grid.

MAPPED AND COMPILED
BY D. E. READ 1959.

