

GEOLOGY OF TASMANIA

SANDFLY

5070

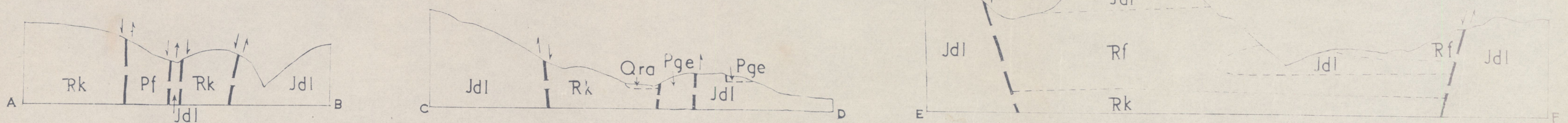
ONE INCH SERIES - UNIVERSITY OF TASMANIA - GEOLOGY DEPT



Corrections by I. McDouall Feb. 1958

Rusden Sandstone difficult to recognize in the field even though outcrop is very good. However its position must be approx. as shown, otherwise the thickness of Pw becomes excessive (or else a fault is present).

V/H APPROX. 3



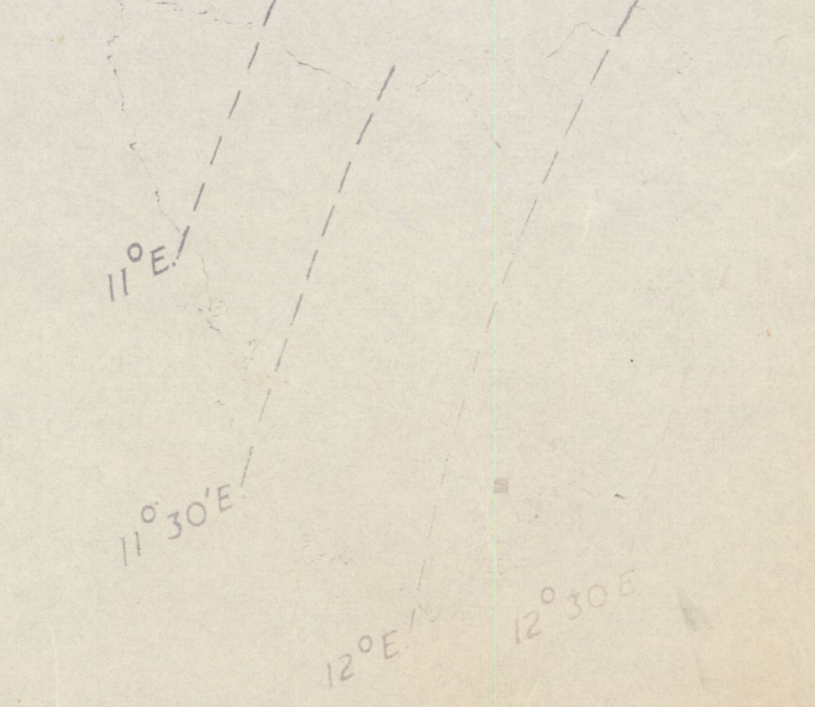
LEGEND

- FORMATION BOUNDARY
- - - FORMATION BOUNDARY - POSITION APPROX.
- ? - FORMATION BOUNDARY - INFERRED
- ? - FAULT - INFERRED
- Dolerite Boundaries
- CONCORDANT SILL
- /// DISCORDANT INTRUSIVE BOUNDARY
- + STRIKE AND DIP
- + HORIZONTAL DIP
- ROAD
- == VEHICULAR TRACK
- - - TRACK
- △ TRIGONOMETRICAL STATION
- PHOTO CENTRE
- - - TRANSMISSION LINE
- ADIT

- Quaternary System
- RECENT SERIES
- Ora ALLUVIUM
- Triassic System
- Rf FELDSPATHIC SANDSTONE
- Rk KNOCKLOFTY SANDSTONE AND SHALE
- Permian System
- Pf FERN TREE MUDSTONE
- Pw WOODBRIDGE GLACIAL FORMATION
- Pge GRANGE MUDSTONE
- IGNEOUS ROCKS
- Tertiary System
- Tb PLIOCENE(?) BASALT
- Jurassic(?) System
- Jdl DOLERITE

Compilation from Aerial Photographs.  
Trigonometric Station Control by courtesy Lands and Survey Department.  
Origin of coordinates 400,000 yds. West and 1,000,000 yds. South of True Origin of Zone 7 of the International Grid

KEY MAP SHOWING MAGNETIC DECLINATIONS  
SECULAR VARIATION 7 MINS. P.A.



MAPPED AND COMPILED BY  
T.H. RODGER 1952

