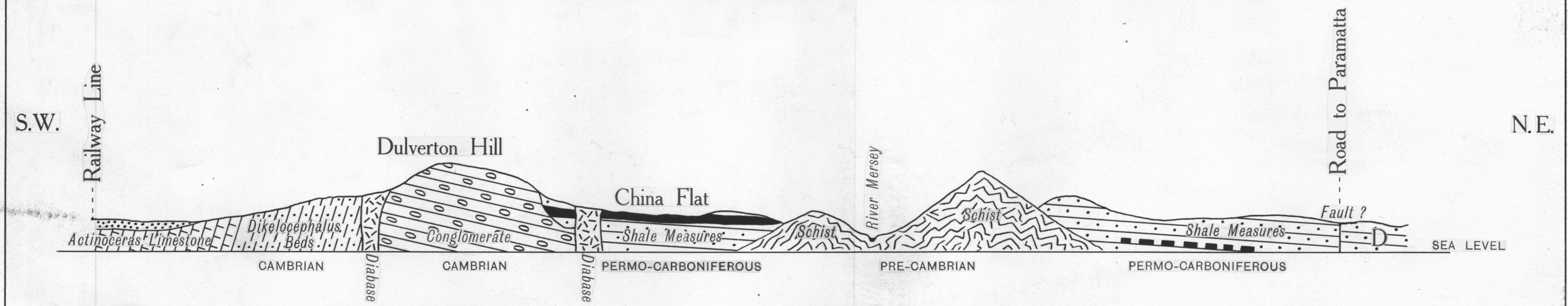


SKETCH GEOLOGICAL SECTION FROM DULVERTON TO ~~PARAMATTA~~  
SAGGERS HILL



——— Seam of Tasmanite  
 - - - Probable Seam  
 D - - Doubtful Country : faulted or seam tails out

VERTICAL SCALE 0 400 800 FEET  
 HORIZONTAL SCALE 0 15 30 CHAINS

W. H. Twelvetrees  
 Government Geologist  
 28. 12. 11.

W.H.R.

328

84H

5 cm

To be reduced until base line measures 16 inches

84H/37