

West

ROCKY CAPE NUCLEUS

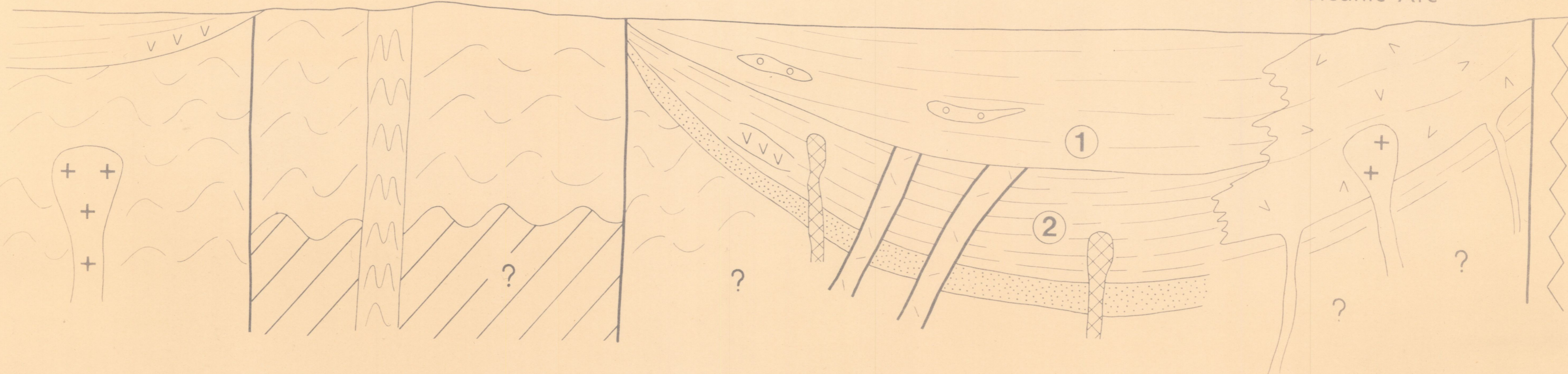
DUNDAS TROUGH

Smithton-King Island

Arthur Lineament

5 cm

Mt. Read Volcanic Arc



East

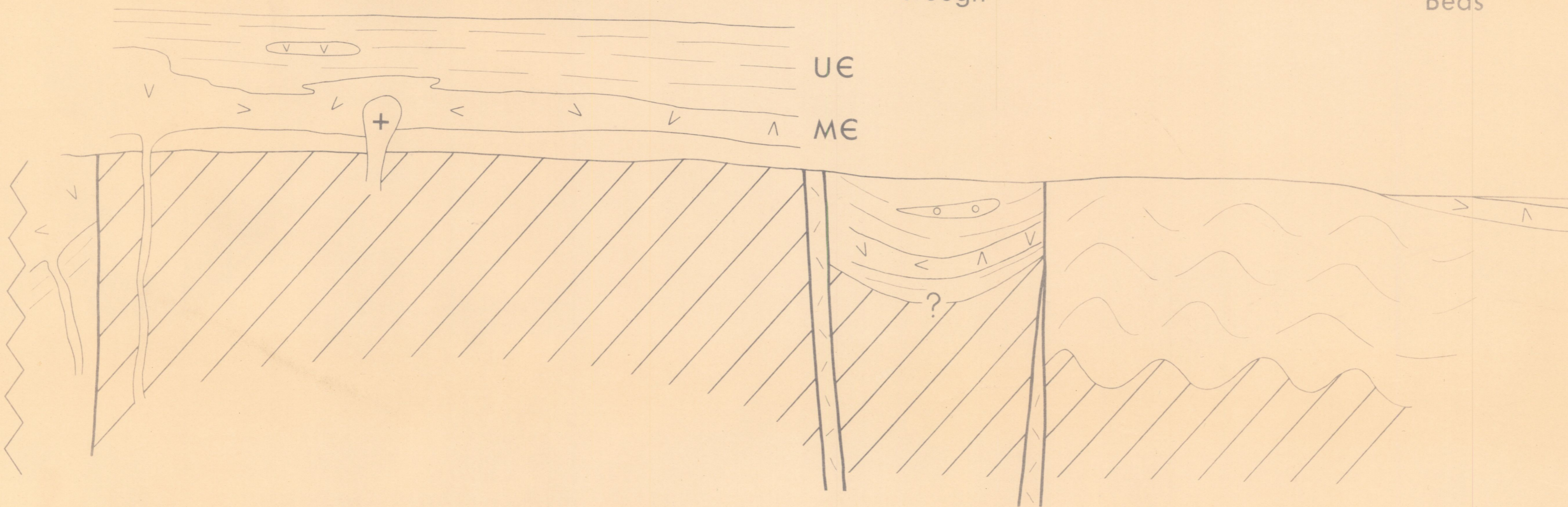
TYENNAN NUCLEUS

Northern Tasmania (projected)

Adamsfield Trough

Jubilee Block

Mathinna Beds



Cambrian

Shales, greywackes with basic volcanics conglomerates

Success Creek Group

Ophiolite or ultramafite

Gabbro

+ Granite pluton

Proterozoic

Younger Precambrian

Older Precambrian

① Dundas Group

② Crimson Creek Argillite

UE Upper Cambrian

ME Middle Cambrian

5