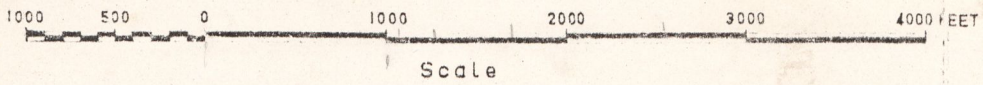


GEOLOGY OF THE TULLAH AREA 1:12,500



QUATERNARY

Qw Reworked Glacials & Alluvium

PROTEROZOIC

Oo Middle-Upper Owen Conglomerate (Sandstone, Conglomerate, Shale)

Ool Lower Owen Conglomerate

Oj Jukes Conglomerate (?)

CAMBRIAN

Crs Rhyolite with minor Sediments

Csr Scree & Vegetation Covered Equivalent of Crs

Cq Quartz Keratophyre

Cok Quartz Keratophyre - Keratophyre

Ck Keratophyre

Cst Tuff - sheared

Ca Altered (?) Volcanics, Slata, Tuff

Co Conglomerate

Cst Slate, Tuff & Tuffaceous Sandstone

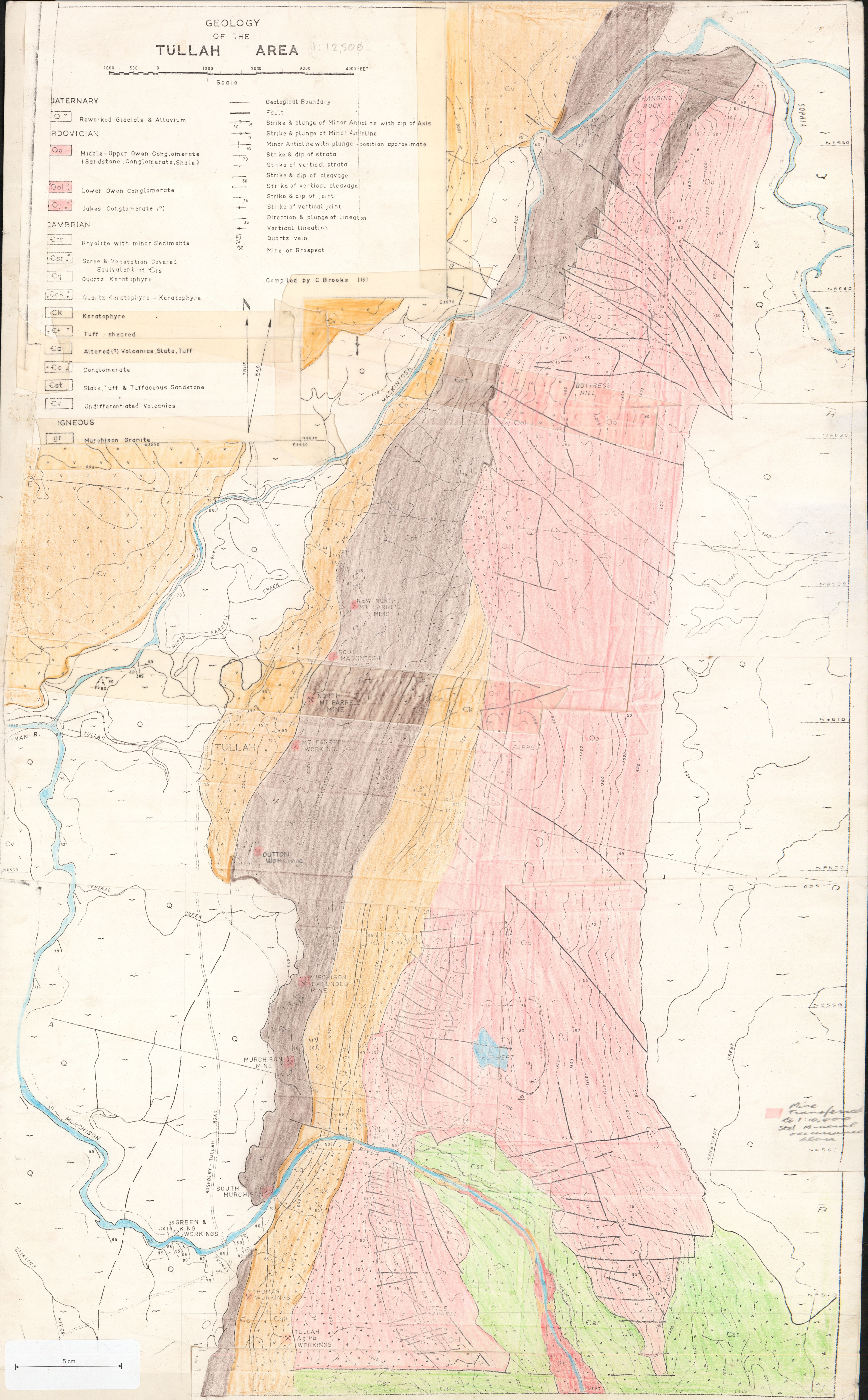
Cv Undifferentiated Volcanics

IGNEOUS

gr Murchison Granite

- Geological Boundary
- Fault
- Strike & plunge of Minor Anticline with dip of Axis
- Strike & plunge of Minor Anticline
- Minor Anticline with plunge - position approximate
- Strike & dip of strata
- Strike of vertical strata
- Strike & dip of cleavage
- Strike of vertical cleavage
- Strike & dip of joint
- Strike of vertical joint
- Direction & plunge of Lineation
- Vertical Lineation
- Quartz vein
- Mine or Prospect

Compiled by C Brooks 1961



*Mine transferred
at 10,000
set mineral
occurrence
shown*

