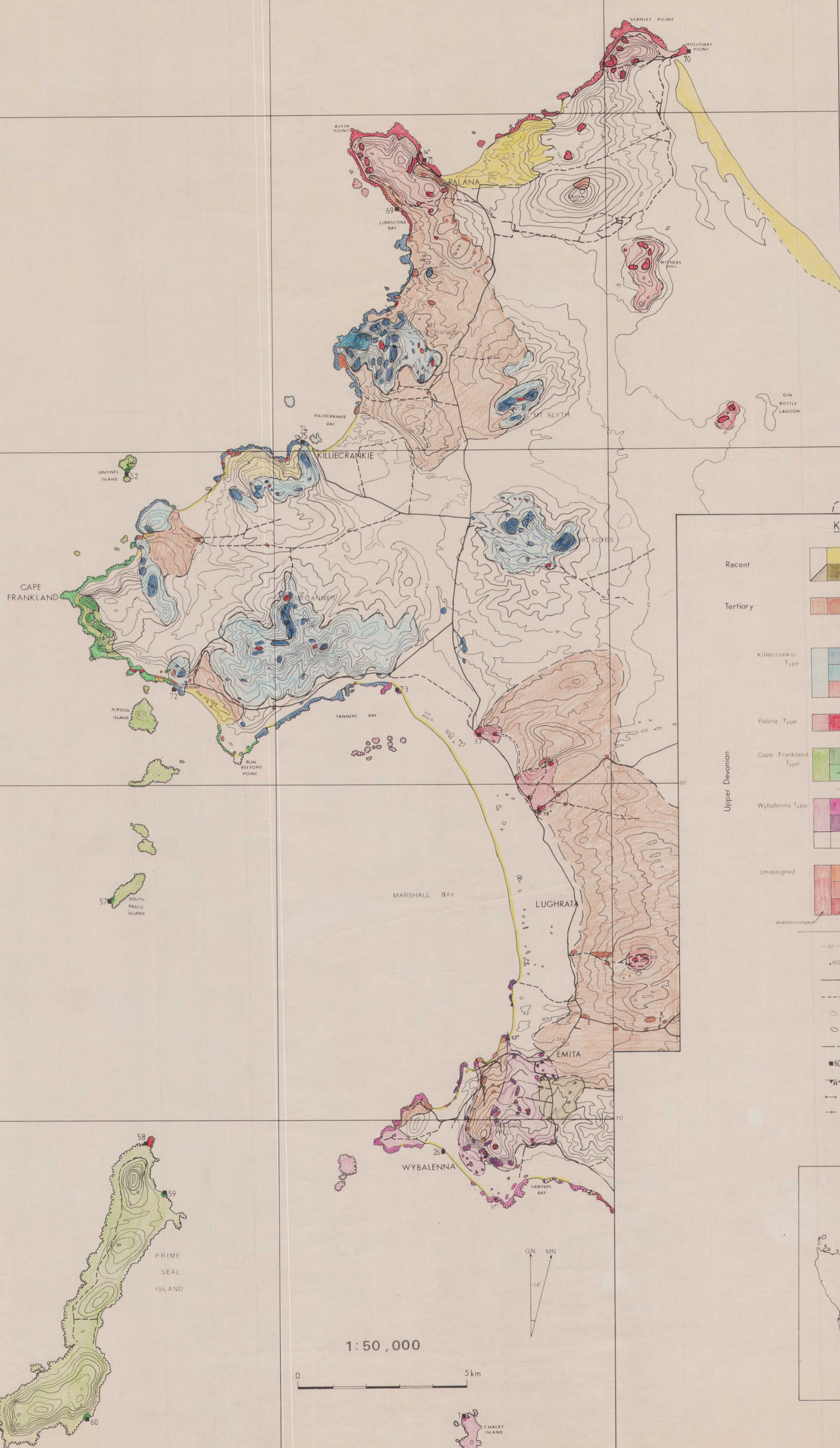
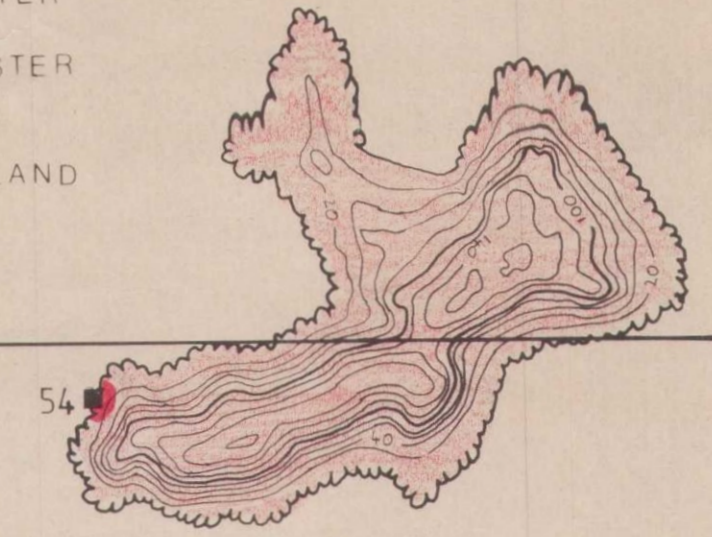
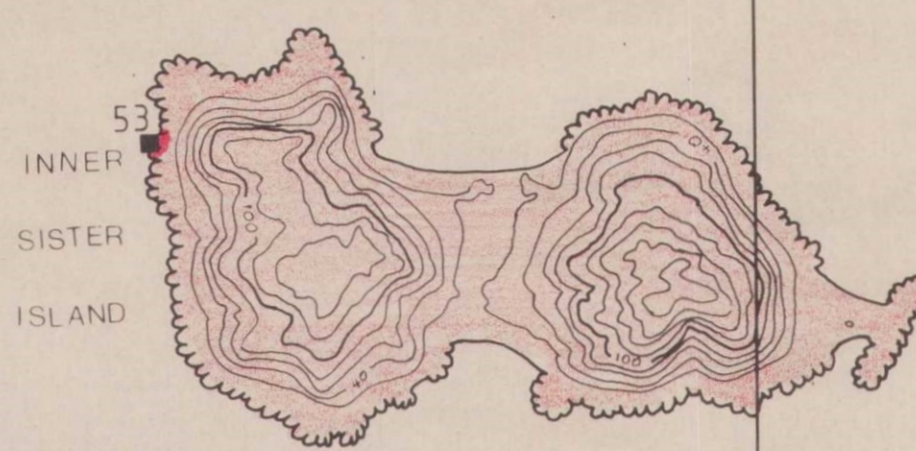
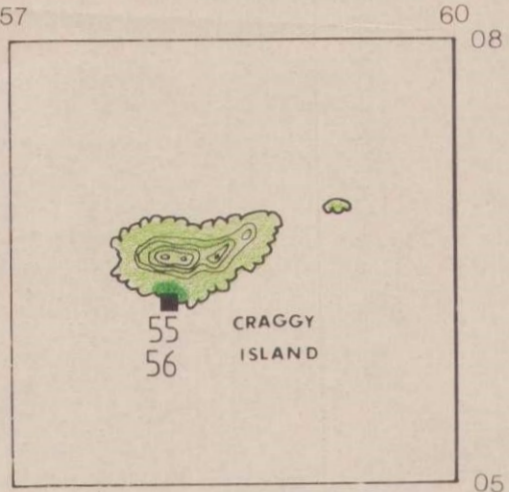


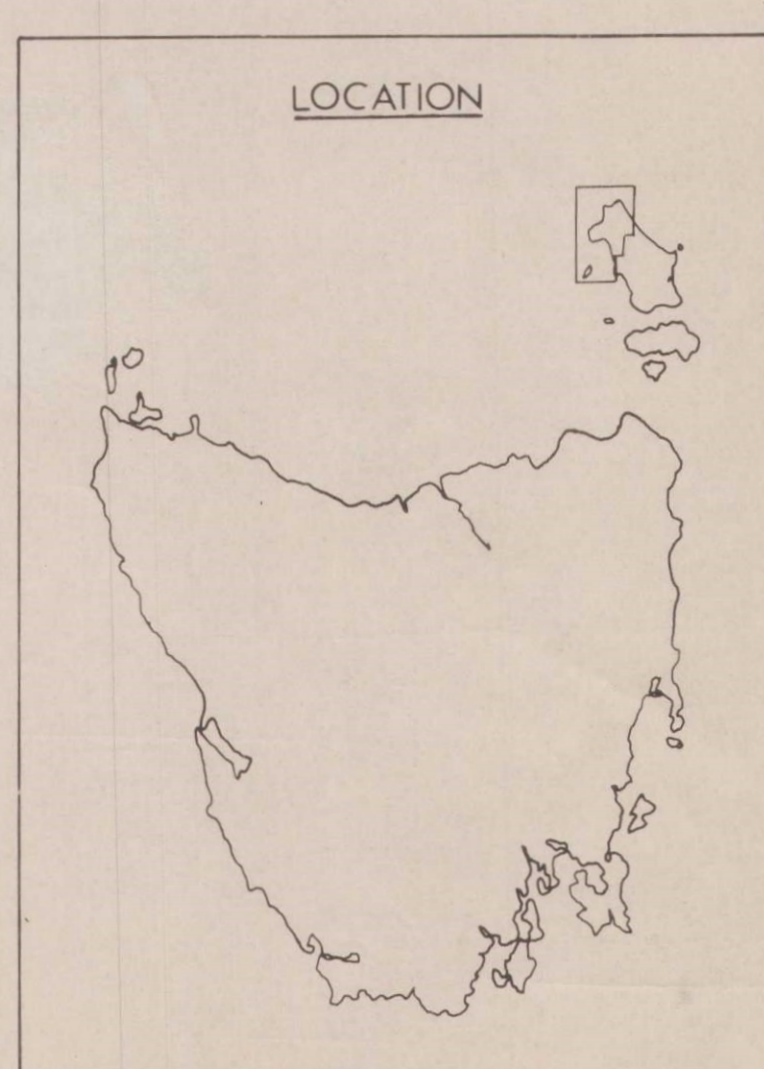
THE GRANITOIDS OF NORTHERN FLINDERS ISLAND

OUTER
SISTER
ISLAND



KEY

Recent		Sand
		Siltstone
Tertiary		Limestone
Killiecrankie Type		Coarse grained alkali feldspar granite
		Medium grained alkali feldspar granite
		Microgranite
Palana Type		Biotite granite
Upper Devonian		Coarse grained biotite-garnet granite Medium to coarse grained biotite cordierite garnet granite (Area of intense hornblende invasion, etc.)
		Hornblende biotite granite Biotite granite
Unassigned		Emita Microgranite
		Quoin Microgranite
		Microgranite
		Undifferentiated
		Outcrop
		Contour (metres)
		Spot height (metres)
		Road
		Track
		Lagoon
		Outcrop
		Geological Boundary (inferred)
		Sample location (eg. FG-60)
		Phenocryst foliation
		Dip (unknown)
		Vertical



1:50,000

