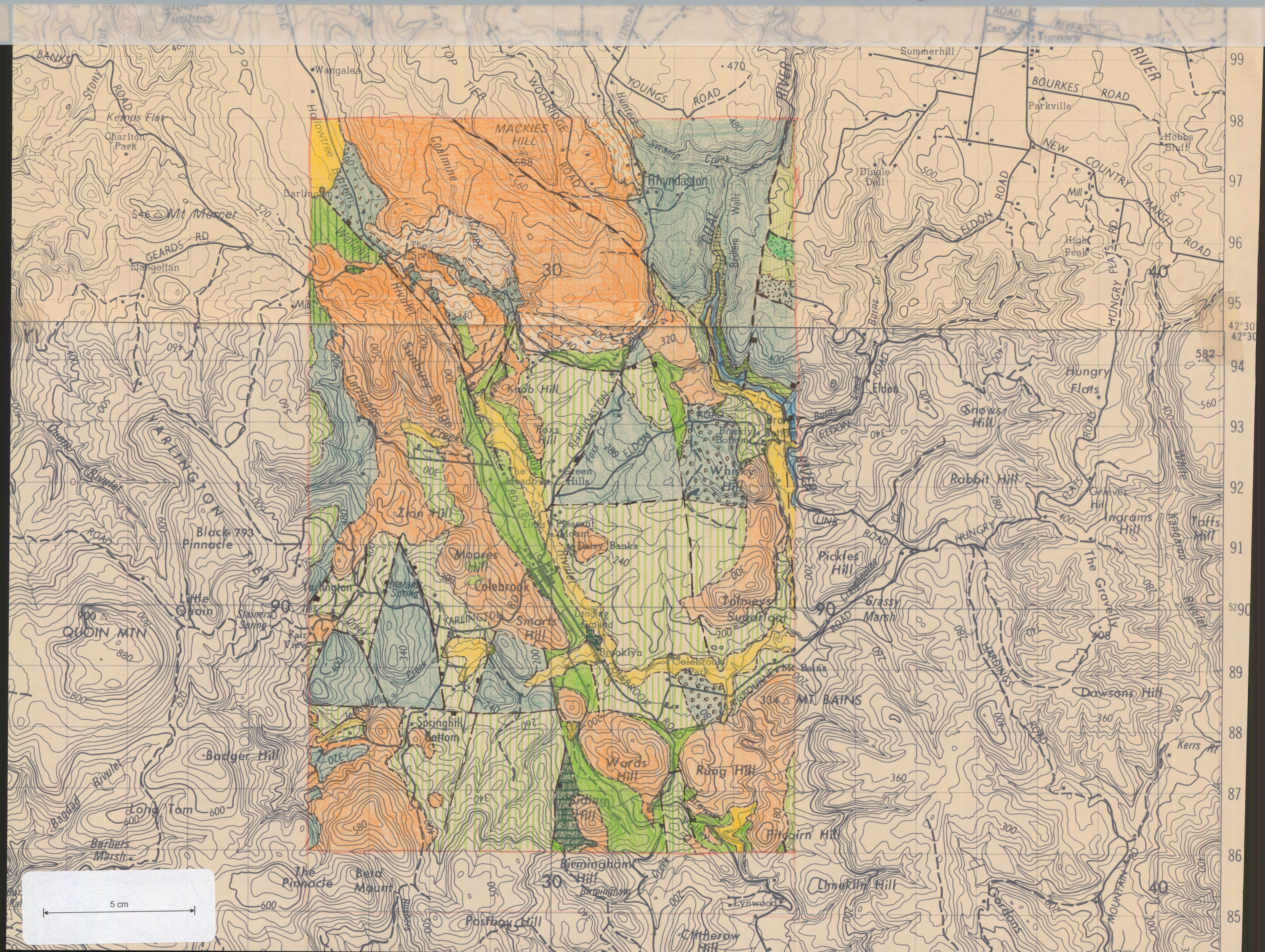
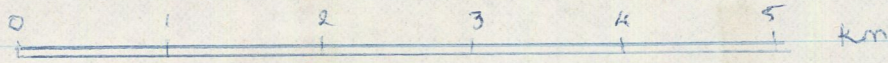


8668



GEOLOGICAL SKETCH MAP


COLEBROOK COALFIELD.




C.A. BACON
 Geology Map - Geological Atlas 1:50,000 series
 Outlands, Brighton.
 CONTOUR INTERVAL 20 m.

LEGEND.

QUATERNARY

 Sands and gravels.

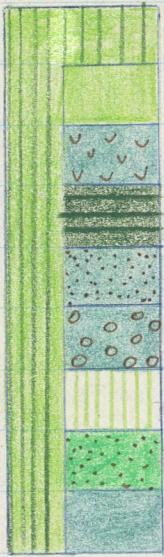
TERTIARY

 Basalt (EN 262 968).

JURASSIC

 Dolerite

TRIASSIC



Undifferentiated.

Upper Triassic lithic arkose and lutite, coal bearing, undifferentiated measures

lithic arkose with volcanic grains, interbedded minor mudstone and coal

Predominantly massive quartz sandstone, occasional beds of lithic sandstone coal siltstone

Feldspathic and quartzose sandstone with interbedded mudstone and graphite

Dominantly medium and fine quartz sandstone, minor mudstone Mech mica + contains clay pellets

Dominantly medium coarse-grained quartz sandstone with minor mudstone, mica, feldspar

Very fine to medium grained quartzose sandstone

Thickly bedded, medium to coarse grained quartz sandstone, very minor usually black shale layers

PERMIAN



Freshwater predominantly feldspathic sandstone with rare coal seams also includes quartz arkose, carbonaceous mudstone rocks. (Correlate in part of Jackey Formation and Cygnet Coal Measures).



Unfossiliferous quartz siltstone (Fern tree Group).

----- Geological boundary - position approximate

-?---?--- Geological boundary - position inferred.

----- Fault - position approximate