

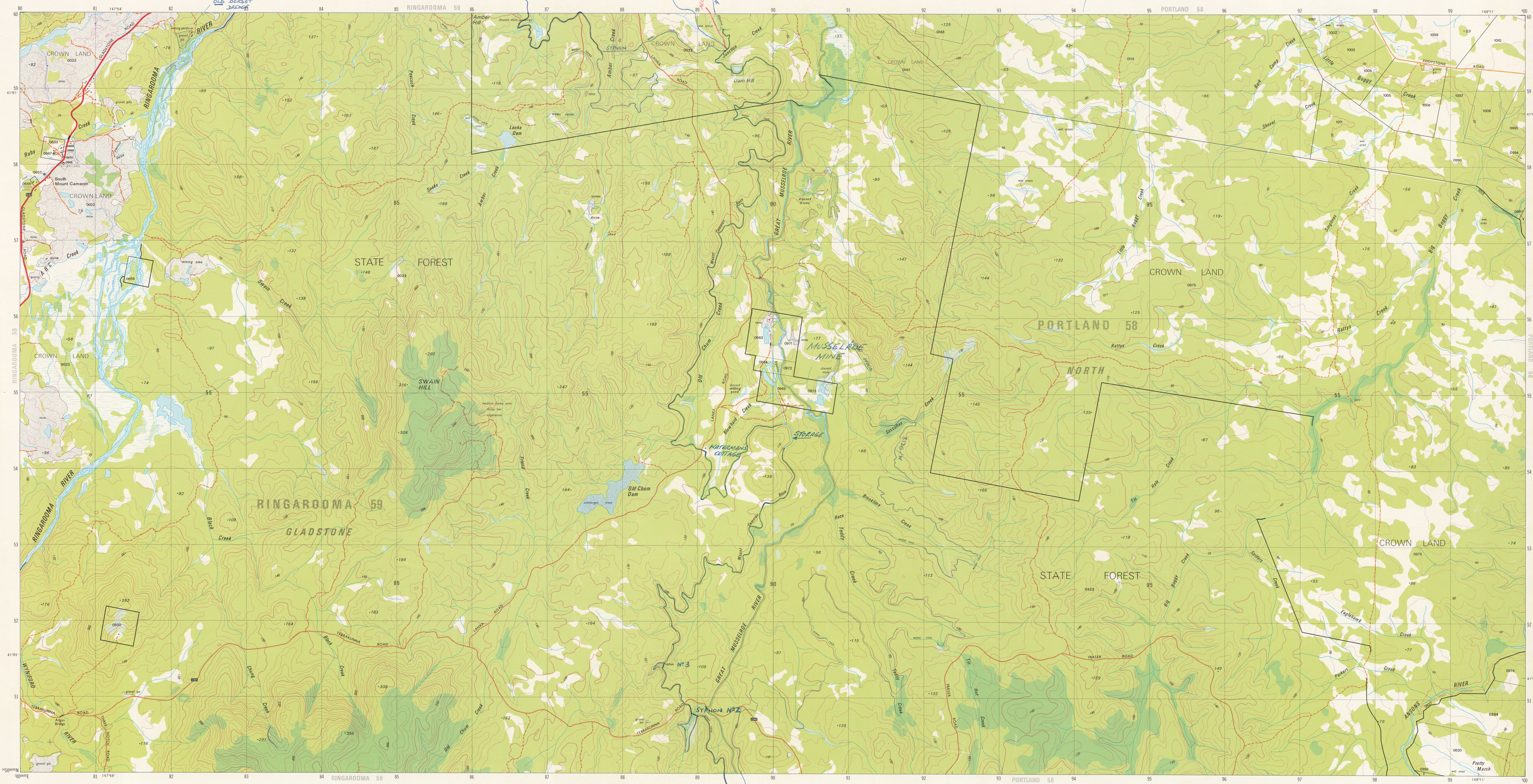
TASMANIA 1:25 000 SERIES

TASMANIA 1:25 000 SERIES



LANKA 5845

DEPT. OF MINES
CARTOGRAPHIC SECTION
PLEASE RETURN

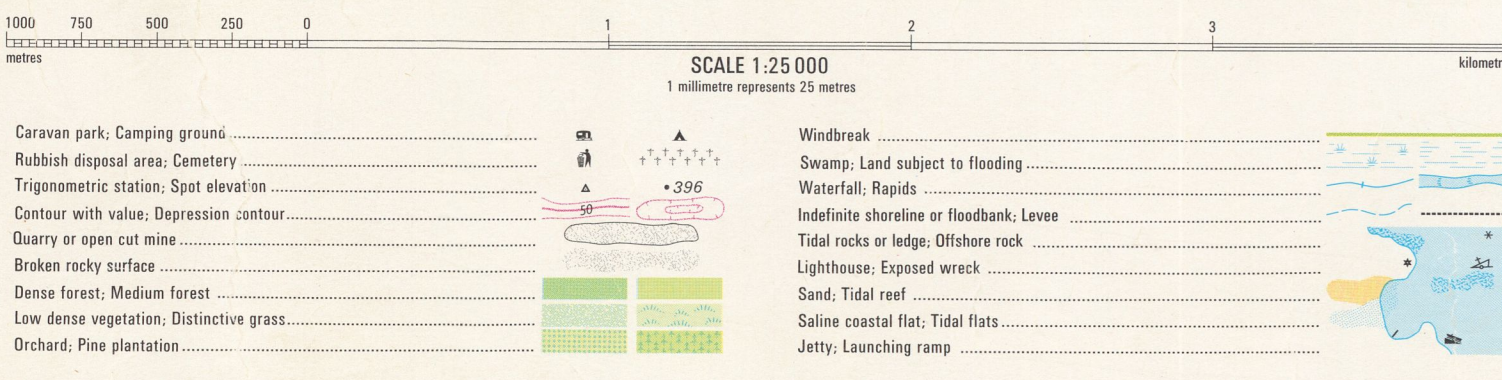


LANKA 5845

PRODUCTION: Mapping Division, Lands Department, Hobart, 1982.
ACCURACY: Horizontal: 50% of well defined detail is within 1.25 metres of true position. Vertical: 90% of elevations are within 5 metres. These accuracies may not be achieved in areas of dense vegetation.
RELIABILITY: Topographic detail compiled from aerial photography flown 1981 with field verification 1982.
NOMENCLATURE: Topographic names have been approved by the Nomenclature Board of Tasmania.
PUBLIC RIGHT OF WAY: Roads or tracks on this map do not necessarily indicate a public right of way.
 To assist in correcting future editions of this map, users noting errors and omissions are invited to write to the Director of Mapping, GPO Box 44A, Hobart, Tasmania, 7001.
 © TASMANIAN GOVERNMENT 1982.

PROJECTION: Universal Transverse Mercator (UTM).
HORIZONTAL DATUM: Australian Geodetic Datum 1986.
VERTICAL DATUM: Australian Height Datum (Tasmania) excepting offshore islands whose datum is mean sea level.
GRID: 1000 metre intervals of the Universal Transverse Mercator Grid, Zone 55 (Australian Map Grid). Australian National Spheroid.
CONTOUR INTERVAL: 10 metres with 50 metre index contours.
WORLD GEODETIC SYSTEM 1972: To convert co-ordinates from this system to Australian Geodetic Datum 1986, increase the value of latitudes by 1.7" and decrease the value of longitudes by 2.2". To obtain heights decrease satellite heights by 2 metres.
MAGNETIC VARIATION: True, Grid and Magnetic North are shown diagrammatically for the centre of this map. Magnetic North is correct for 1982 and moves easterly about 0.1" every two years.

- Built up area with commercial centre
- Roads maintained for continuous public use
 - Primary road, Route number
 - Secondary road, Route number
- Roads of restricted use or access
 - Other roads, Bridge
 - Vehicular track, Gate
- Walking track, Bridge
- Railway, Station
- Light railway
- Power transmission line and pylon positions
- Building: Features of special interest, Ruin, Mine
- Post office, Police station, Fire station, School



BOUNDARIES shown on this map are NOT authoritative. For full particulars please consult the Registrar-General's Department or the Lands Department. Property and land parcel boundaries are shown as at July 1982. Areas within proclaimed towns or less than two hectares are not depicted. To give a land parcel reference, prefix parcel number with municipal number.

Municipality name: LILYDALE
Municipality number: 55
Municipality boundary: [Symbol]
Ward name: JETSON
Town boundary: [Symbol]
Reserve boundary: [Symbol]
Property boundary: Land parcel boundary and number: 0371

