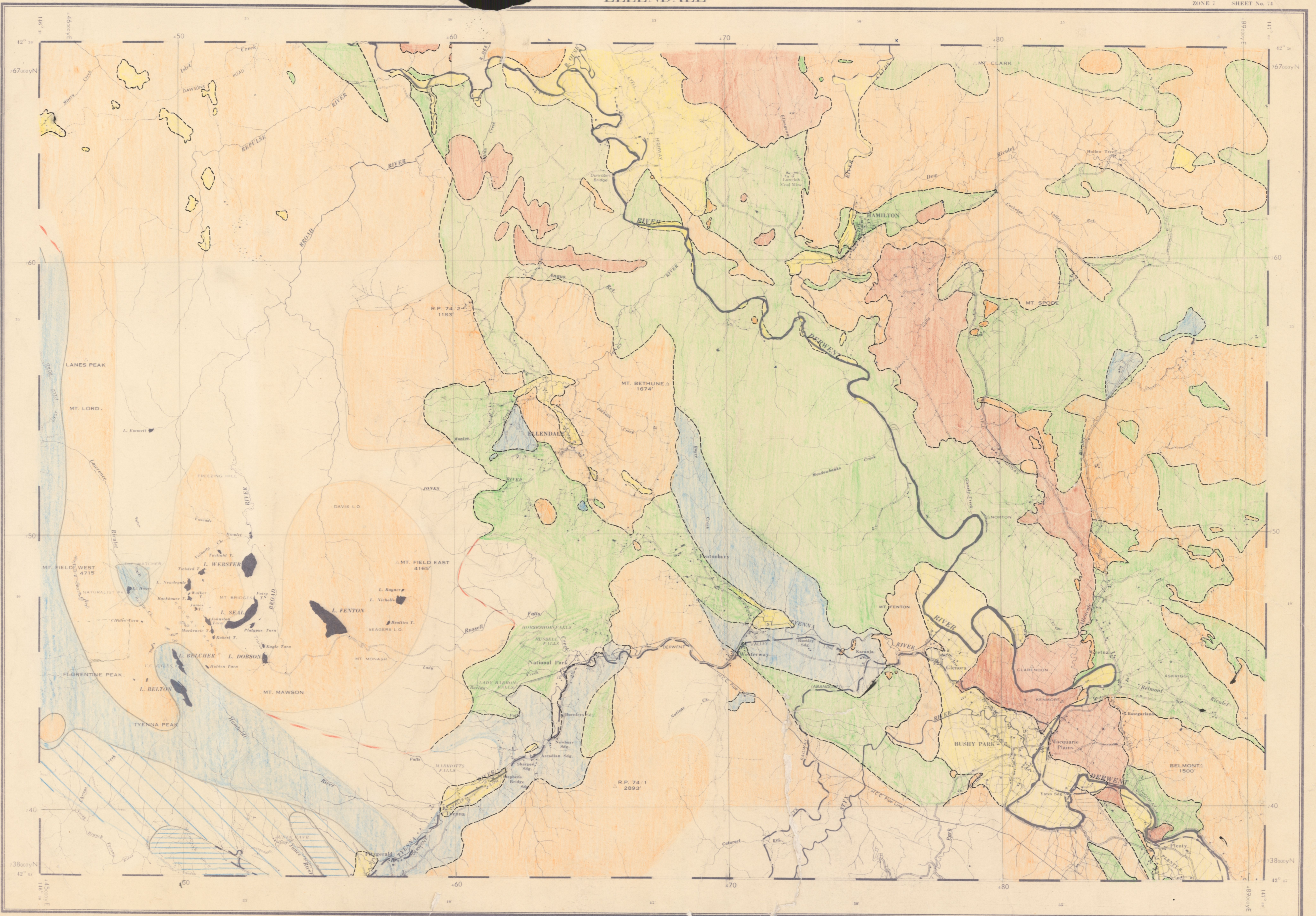


PROVINCE SOIL MAP OF TASMANIA ELLENDALE

AUSTRALIA 1:63360

ZONE 7 SHEET No. 74

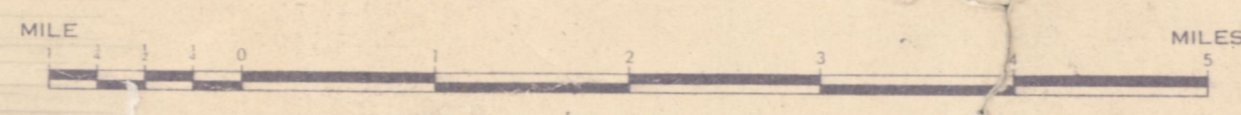


Legend

- Recent
- Triassic
- Permian
- Ordovician Gordon Riv. L. Stone
- " Caroline Ck. Series
- Tertiary Basalt
- Jurassic Dolerite

BASE MAP
Compiled from aerial photographs by Division of Soils, C.S.I.R.O., Hobart, based on slotted lens plate assembly by Division of National Mapping, Department of National Development, Canberra, A.C.T.
DATE OF PHOTOGRAPHY 1946-47
Detail in the western section is revised from maps and aerial photographs supplied by Australian Newsprint Mills Ltd.
DATE OF PHOTOGRAPHY Jan. 1952
Topographic nomenclature on this map, approved by The Nomenclature Board of Tasmania.

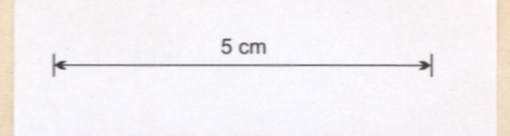
SCALE 1 MILE TO 1 INCH



KEY TO ADJOINING SHEETS

KING WILLIAM	OUSE	OATLANDS
HUNTLEY	ELLENDALE	BRIGHTON
PEDDER	STYX	HOBART

Highway or Main Road
Other Roads
Track
Watercourse with Falls
Swamp or Marsh
Lake or Tarn, Bridge, Dam
Drain
Trig. Station with Altitude, Building, Quarry
Fence, Logging Tramway
Railway with Station and Siding
Electric Transmission Line
Cliffs, Waterhole



27
371