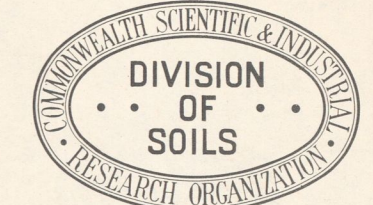


RECONNAISSANCE SOIL MAP OF TASMANIA

OATLANDS

AUSTRALIA 1:63360

ZONE 7 SHEET No. 68



DIVISIONAL REPORT 4/59

KEY TO SOILS

Podzolic Soils and Podzols on Sandstone	Pss
Podzolic Soils on Mudstone	Pm
Podzolic Soils on Dolerite	Pd
Brown Soils on Siliceous Sandstone	Bss
Brown Soils on Micaceous Sandstones	Bms
Brown Soils on Feldspathic Sandstone	Bfs
Brown Soils on Dolerite	Bd
Brown Soils on Basalt	Bb
Soils of Alluvial Deposits	A
Yellow-brown Soils on Solifluction Deposits	YBs

SOIL BOUNDARIES

Surveyed	—
Photo-interpreted	- - -

SAMPLING SITES

12124	1188
-------	------

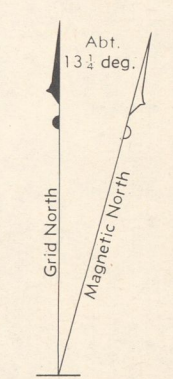
Soils surveyed by J. D. Cowie, 1958-59.
Compiled at Tasmanian Regional Laboratory, C.S.I.R.O., Hobart, 1960. Draftsman: C. J. Smith.

Highway, or Main Road with Sealed Surface	—
Main Road (Gravel surface)	—
Other Roads	—
Vehicular Track	—
Railway and Station	—
Railway (Abandoned)	—
Quarry, Building, Bridge	—
Fence	—
Electric Transmission Line	—
Watercourse (Perennial)	—
Watercourse (Intermittent)	—
Drain	—
Marsh or Swamp	—
Lake	—
Waterhole, Dam	—
Trig. Station with Altitude (2nd Order)	△ 2425'
Trig. Station with Altitude (3rd Order)	○ 1993'
Cliffs	—

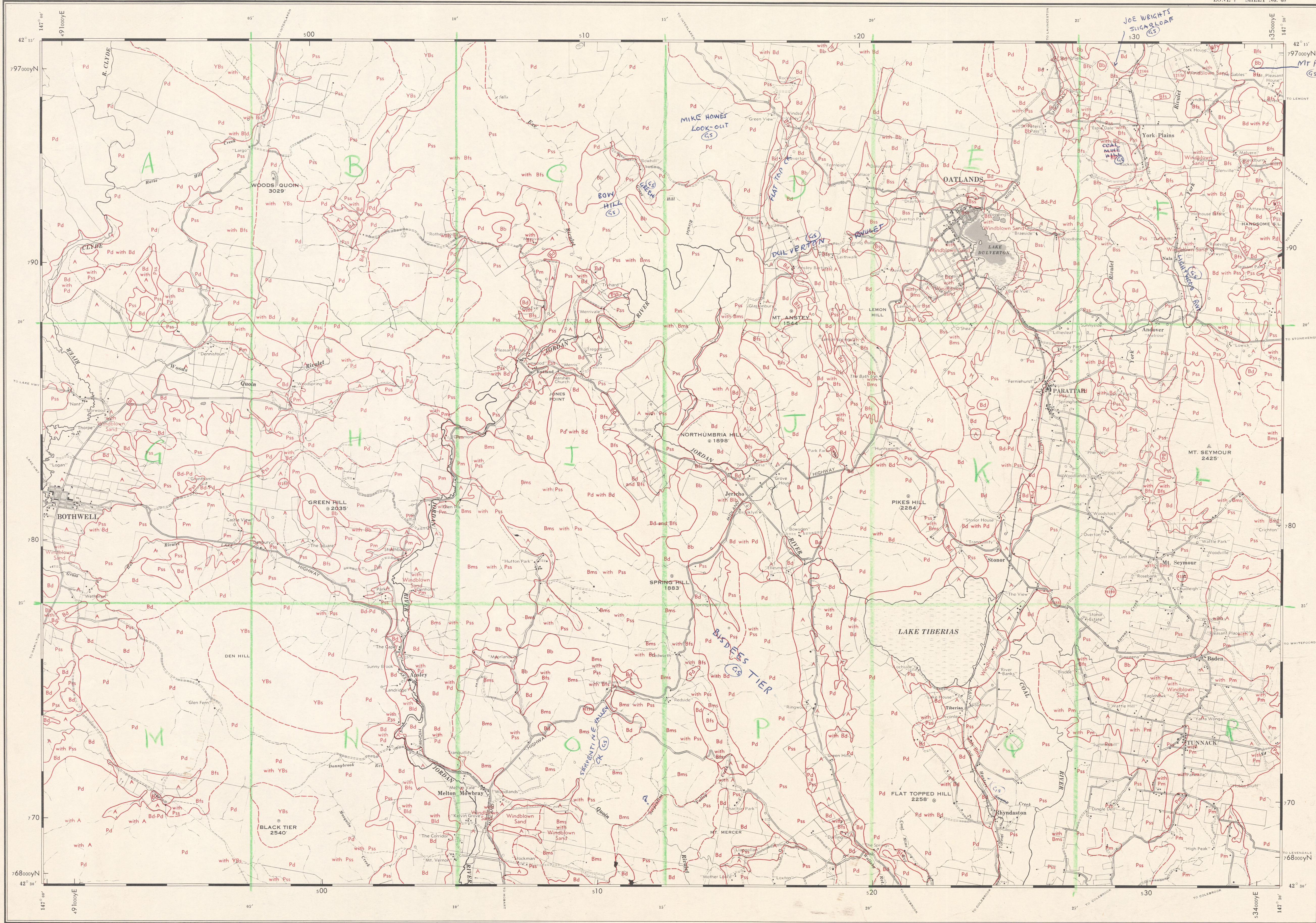
KEY TO ADJOINING SHEETS

LAKE ECHO	INTERLAKEN	TOOMS
OUSE	OATLANDS	SWANSTON
ELLEDALE	BRIGHTON	BUCKLAND

BASE MAP
Compiled from aerial photographs and slotted template assembly, by Division of National Mapping, Department of National Development, Canberra, A.C.T.
DATE OF PHOTOGRAPHY . . . 1958-59



Produced by Division of Soils, C.S.I.R.O., Hobart, 1960



SCALE 1 MILE TO 1 INCH

