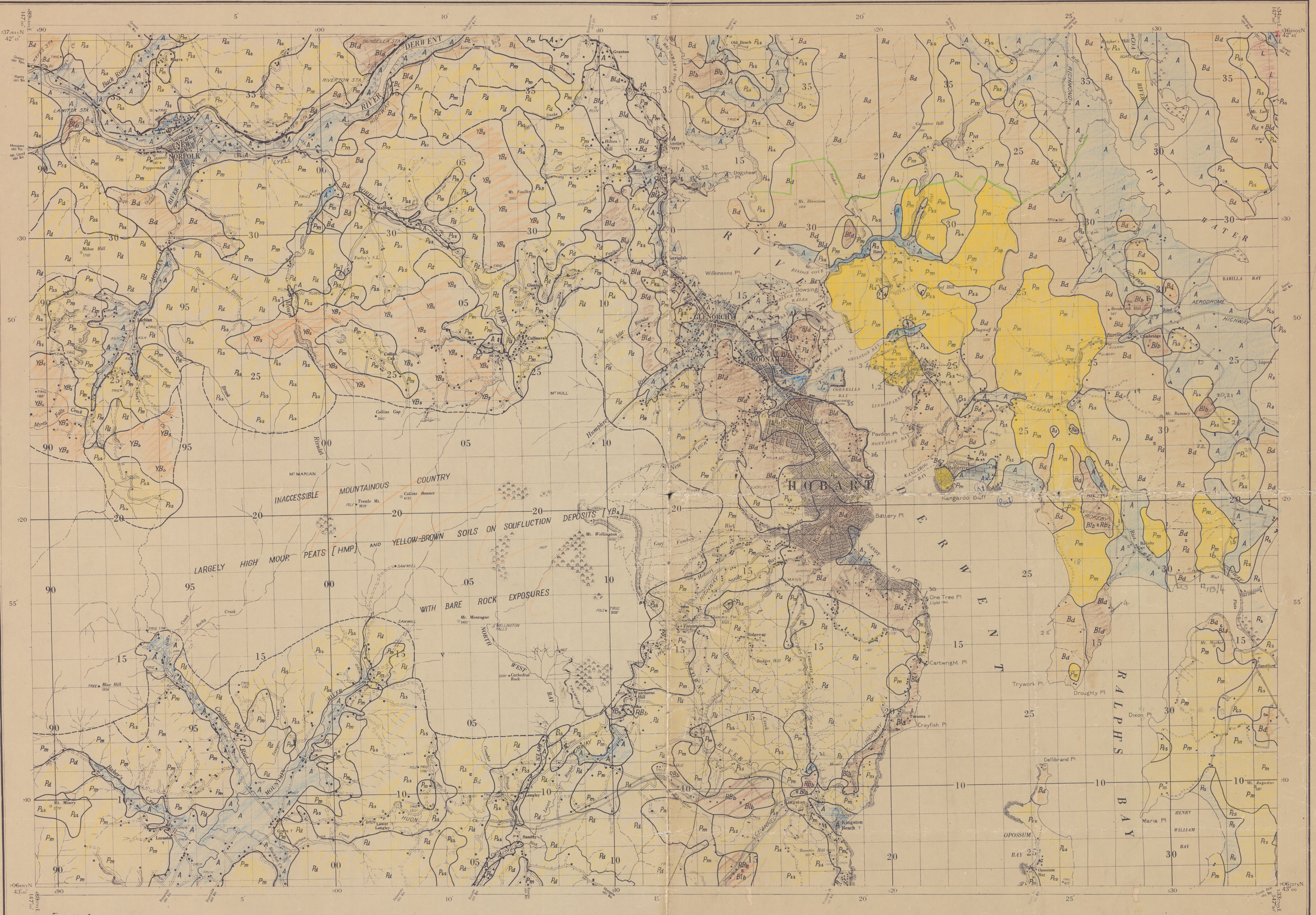


# RECONNAISSANCE SOIL MAP OF TASMANIA

HOBART

ZONE 7  
SHEET SOUTH K 55  
PHI SE SW

AUSTRALIA 1:63,360



**ACKNOWLEDGEMENT**

Soil boundaries and symbols have been superimposed upon a map supplied by Dept of Lands and Surveys, Hobart, showing, with some omissions, the topographic detail of sheet 82, Zone 7, reproduced by IHO (Aust) Cartographic Company, Melbourne, 1942.

INDEX TO ADJOINING SHEETS

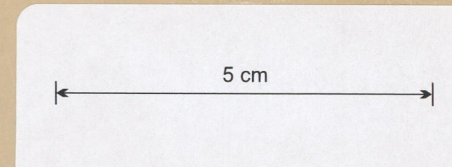
LENDALE	BRIGHTON	BUCKLAND
STEVENS	HOBART	SORRELL
TRICHO	KINGBURN	TASSIAN

NOTE—The coordinates on this map are referred to a false origin 400,000 yds West and 1,000,000 yds South of the True Origin of Zone 7 and are applicable to Maps of Tasmania only.

**KEY TO SOILS**

- PODZOLS ON COVER SANDS
- PODZOLS AND PODZOLIC SOILS ON SANDSTONE
- PODZOLIC SOILS ON MUDSTONE
- PODZOLIC SOILS ON DOLERITE
- RED-BROWN SOILS ON BASALT
- BROWN SOILS ON DOLERITE
- BROWN SOILS ON LIMESTONE
- BLACK SOILS ON BASALT
- BLACK SOILS ON DOLERITE
- SOILS OF ALLUVIAL DEPOSITS
- SOILS OF RECENT SANDS AND SHELL BEDS
- YELLOW-BROWN SOILS ON SOULFLUCTION DEPOSITS
- HIGH MOOR PEATS
- LATERITIC SOILS

Pss
Psa
Pm
Pa
RBb
Rb
Bl
Blb
Blc
A
Ra
YBs
HMP
L



DIVISIONAL REPORT 13/55

Soils surveyed by J. Loveday, 1952-55  
Soil map compiled & drawn at Tasmanian Regional Laboratory, CSIRO, October, 1955.