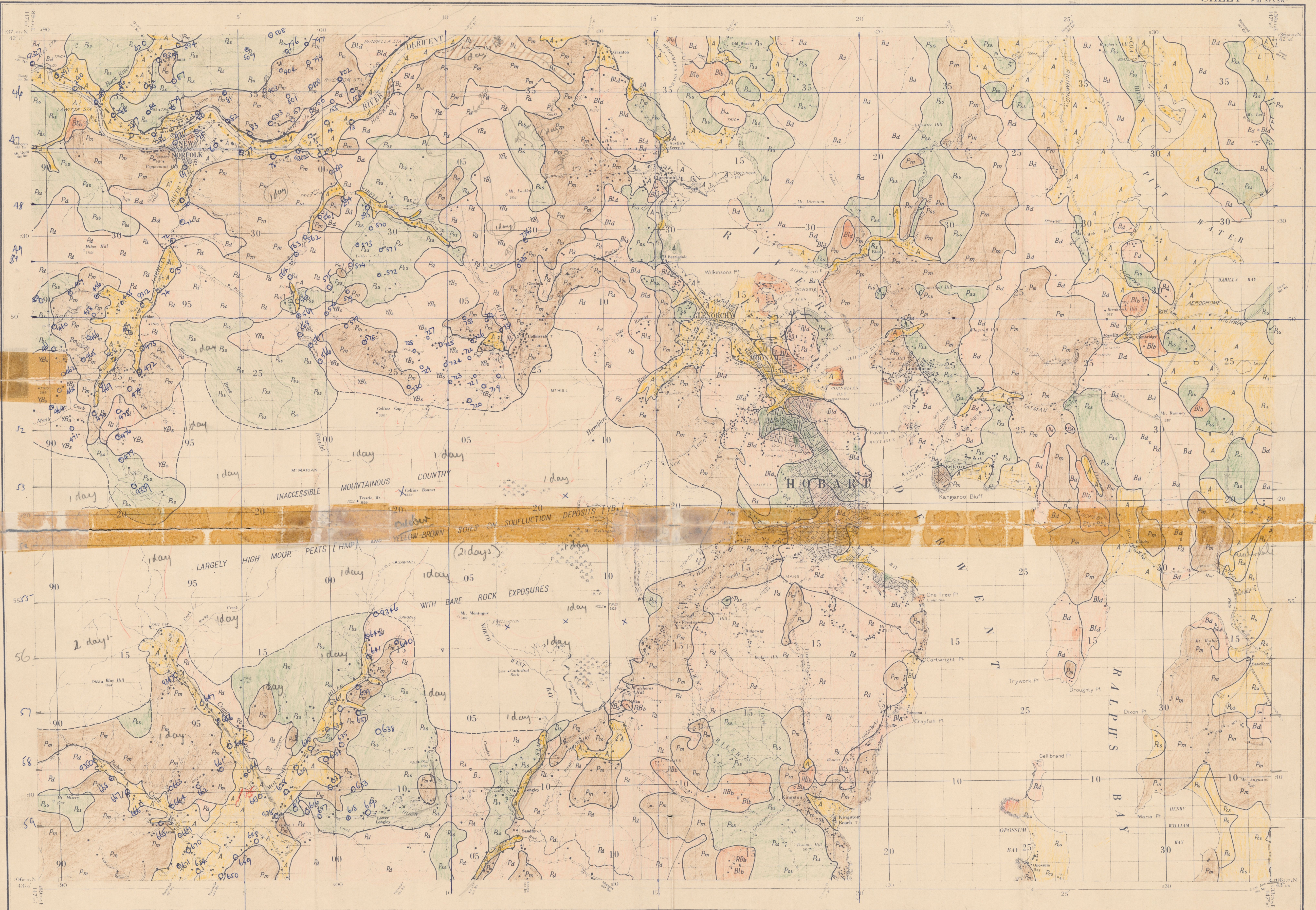


RECONNAISSANCE SOIL MAP OF TASMANIA HOBART

AUSTRALIA 1:63,360

ZONE 7
SHEET SOUTH K 55
P.M. ST. & SW.



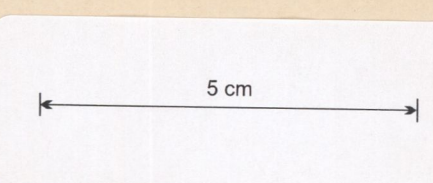
ACKNOWLEDGEMENT
Soil boundaries and symbols have been superimposed upon a map supplied by Dept of Lands and Surveys, Hobart, showing, with some omissions, the topographic details of sheet B2, Zone 7, reproduced by LHQ (Aust) Co. Geographic Company, Melbourne, 1942.

Fenced	—
Roads: Unfenced	—
Impassable in MF in bad weather	—
Track	—
Bridge with load capacity in tons	—
— except where shown in numbers or text	—
Culvert	—
Water Hole	—
Swamp or Marsh	—
River or Creek	—
Watercourse (non perennial)	—
Water Channel	—
Embankment	—
Cutting	—
Railway (double line)	—
Railway (single line)	—
Light Railway	—

House	•
Garage	•
School	•
Hotel	•
Blacksmith Shop (forge)	•
Church	•
Mill or Factory	•
Lighthouse	•
Post Office	•
Post & Telegraph Office in village	•
Telegraph or Telephone line	—
Electric Transmission Lin.	—
Cemetery	•
Wind Pump	•
Altitudes	—
— 420	—
— First Class	Δ 405
— Second "	Δ 402
— Trig Sta. Third "	Δ 398
— & altitude Fourth "	• 396

INDEX TO ADJOINING SHEETS

HELMSDALE	BRIDGE	BUCKLAND
STAS	HOBART	SOWELL
TRICTON	KINGBOROUGH	LASSAN



NOTE—The coordinates on this map are referred to a datum of 1900, which was used in 1900 for the 'South of the Tropic of Tropic' and are applicable to the 'Tropic of Tropic' only.

KEY TO SOILS

PODZOLS ON COVER SANDS
PODZOLS AND PODZOLIC SOILS ON SANDSTONE
PODZOLIC SOILS ON MUDSTONE
PODZOLIC SOILS ON DOLERITE
RED-BROWN SOILS ON BASALT
BROWN SOILS ON DOLERITE
BROWN SOILS ON LIMESTONE
BLACK SOILS ON BASALT
BLACK SOILS ON DOLERITE
SOILS OF ALLUVIAL DEPOSITS
SOILS OF RECENT SANDS AND SHELL BEDS
YELLOW-BROWN SOILS ON SOULFUCTION DEPOSITS
HIGH MOOR PEATS
LATERITIC SOILS

Soil boundaries (Surveyed)
Unsurveyed (Interpreted from aerial photographs)
Limit of accessible country

Rs	CAINOZOIC
Pm	Sandstone (Presumably Triassic)
Pd	PERMIAN Mudstone
RBb	Dolerite
Bd	TERTIARY Basalt
Bl	Dolerite
Blb	PERMIAN Limestone
Blc	TERTIARY Basalt
Bl	Dolerite
A	CAINOZOIC
YB	DOLERITE Soils surveyed by J. Loveday, 1952-55
HMP	CAINOZOIC Soil map compiled, drawn at Tasmanian Regional Laboratory, C.S.I.R.O., October, 1955.



DIVISIONAL REPORT 13/55