

# MOINA MINERAL DISTRICT

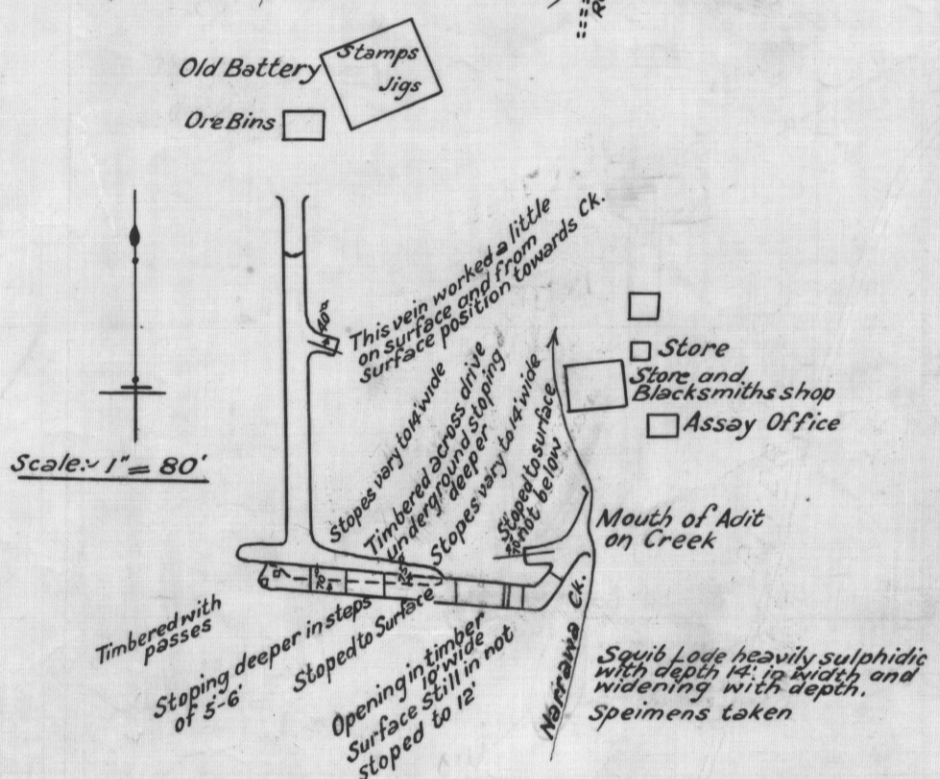
SHOWING MINE WORKINGS IN INSETS  
SCALE: 20 CHAINS TO 1 INCH

### LEGEND

- Tertiary and Quaternary Alluvial
- Silurian Limestone
- Pre-Silurian (Slates Conglomerates & Grits Porphyroids)
- Pre-Silurian Conglomerates & Tubicolour Sandstones
- West Coast Conglomerates
- Tertiary Igneous Lava & Tuffs
- Devonian Tin & Tungsten bearing Granite
- Granite Porphyry & Greisen

### INSET

SHOWING LOWER WORKINGS OF SQUIB MINE (SUNRISE) (ORIGINALLY WORKED FOR GOLD)



### INSET

SULLIVANS (POVEY AND JONES) ADIT

Scale: 1" = 40'

### INSET

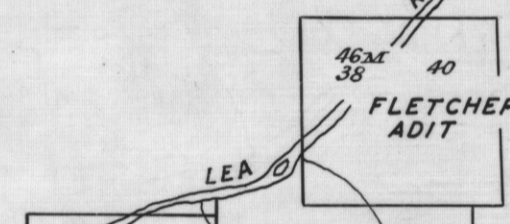
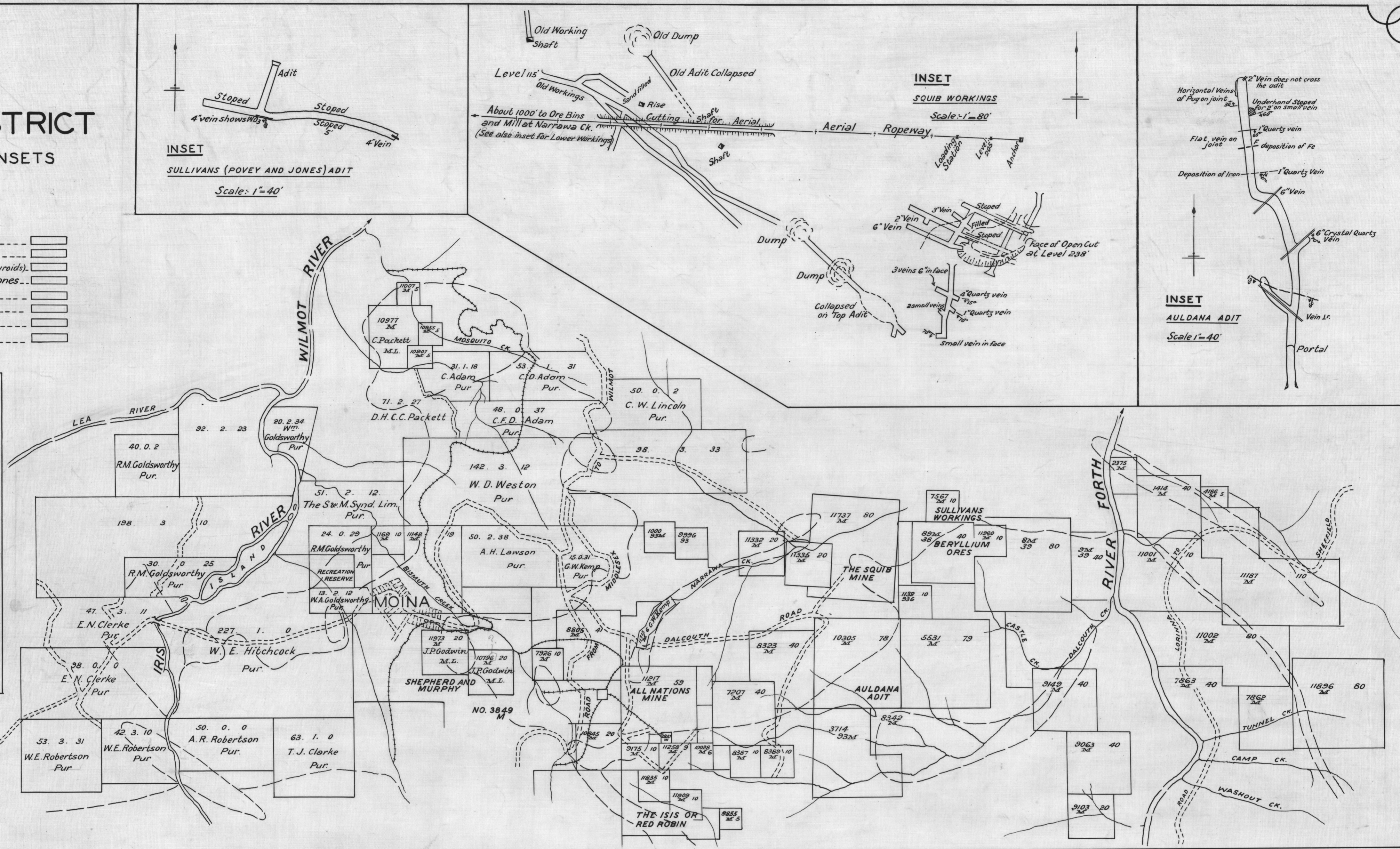
SQUIB WORKINGS

Scale: 1" = 80'

### INSET

AULDANA ADIT

Scale: 1" = 40'



### INSET

STORMONT BISMUTH WORKINGS

Scale: 1" = 100'

### INSET

SHEPHERD AND MURPHY MINE GODWIN'S WORKINGS

Scale: 1" = 400'

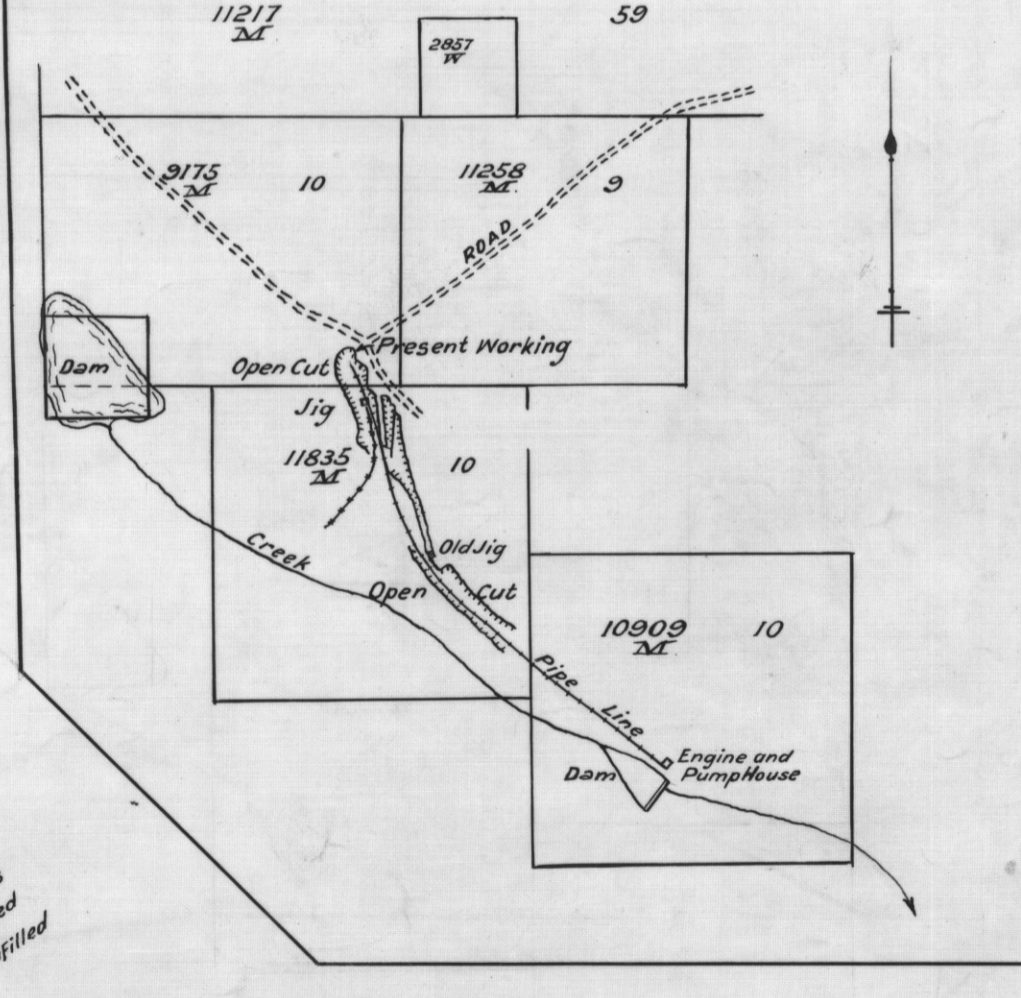
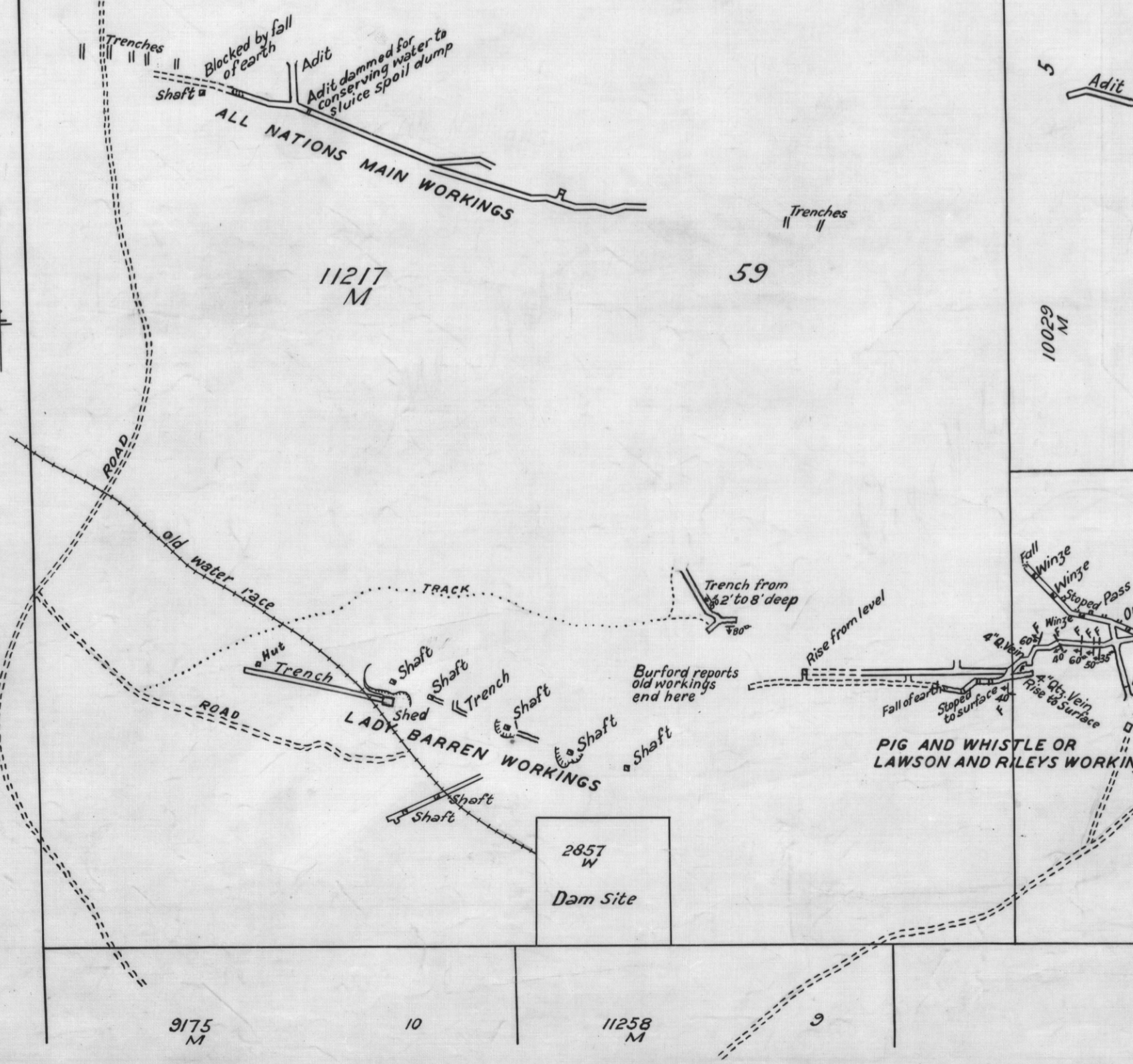
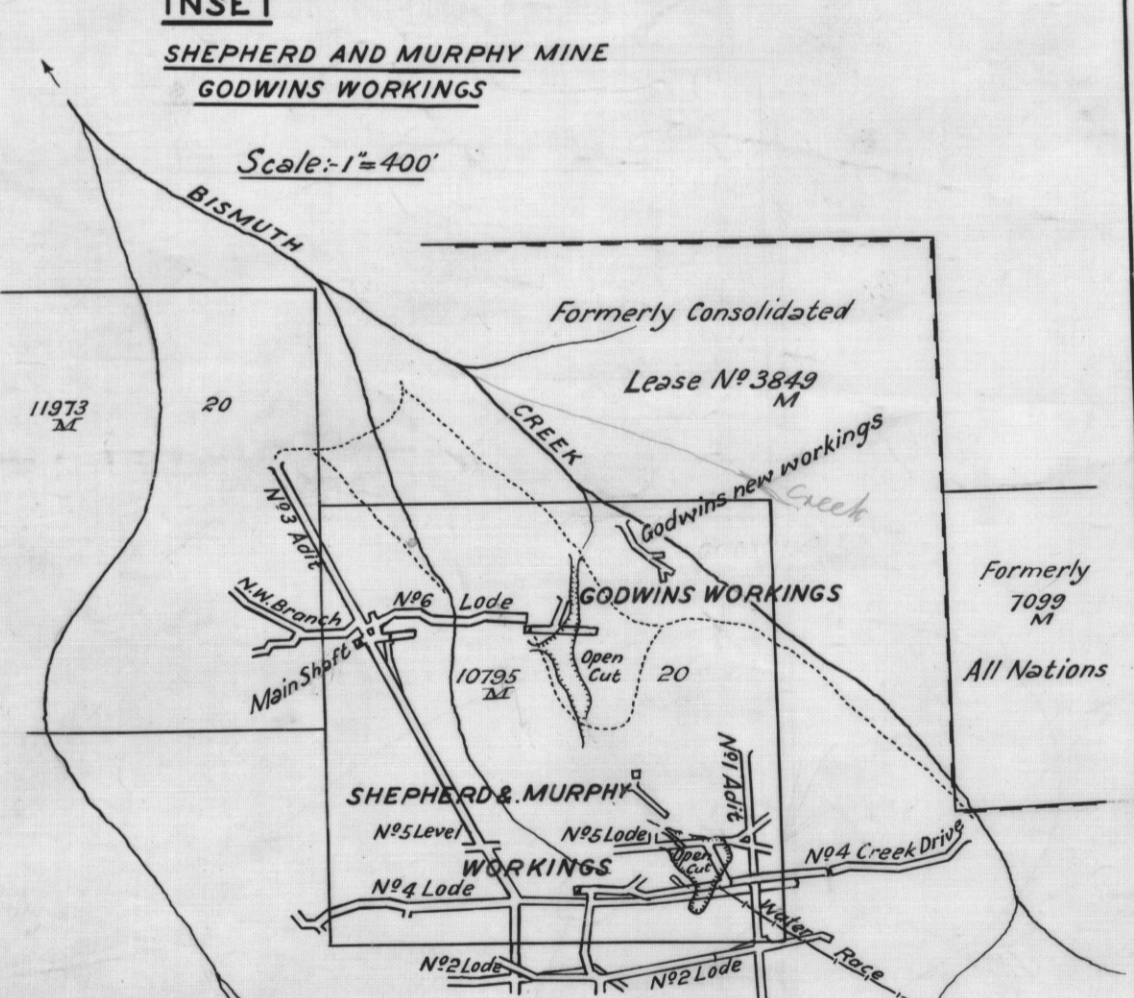
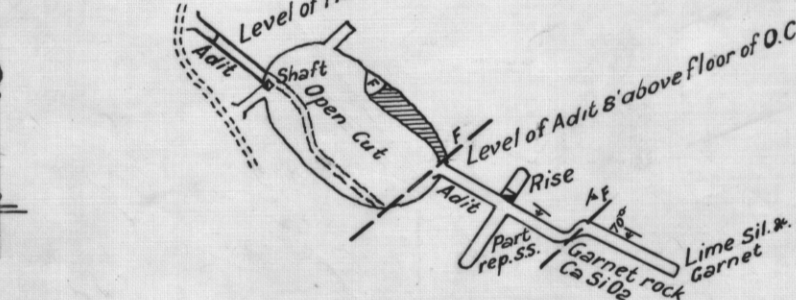
### INSET

ALL NATIONS MINE

Scale: 1" = 200'

### INSET

ISIS MINE (TOWNSEND'S WORKINGS)



DEPARTMENT OF MINES, TASMANIA.		
FIELD WORK	H. S. Keid M.Sc.	GEOLOGIST
PLAN BY	M. R. C.	DRAUGHTSMAN
APPROVED	[Signature]	DIRECTOR OF MINES
DATE	18-10-43	PLAN NO. 9-899