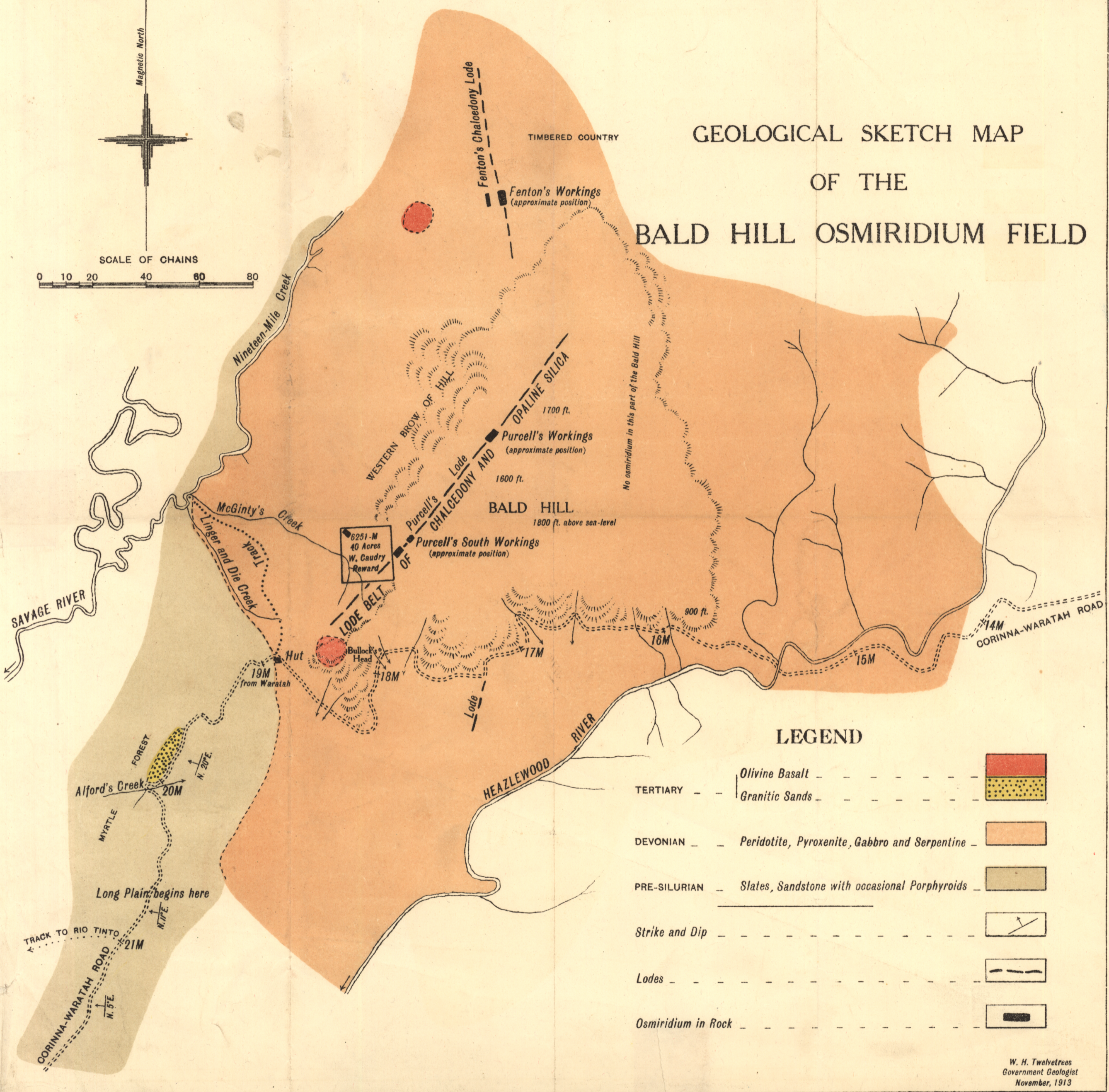
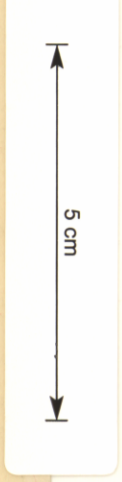
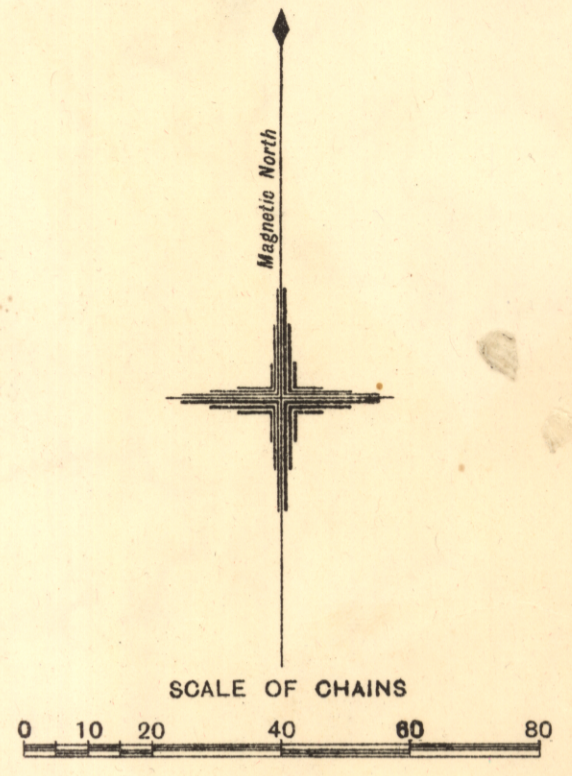


GEOLOGICAL SKETCH MAP OF THE BALD HILL OSMIRIDIUM FIELD



LEGEND

TERTIARY	Olivine Basalt	
	Granitic Sands	
DEVONIAN	Peridotite, Pyroxenite, Gabbro and Serpentine	
PRE-SILURIAN	Slates, Sandstone with occasional Porphyroids	
	Strike and Dip	
	Lodes	
	Osmiridium in Rock	

W. H. Twelvetrees
Government Geologist
November, 1913

2

90A



90/135

177 44

Photo Adapted by John Weil Government Printer, Hobart, Tasmania.