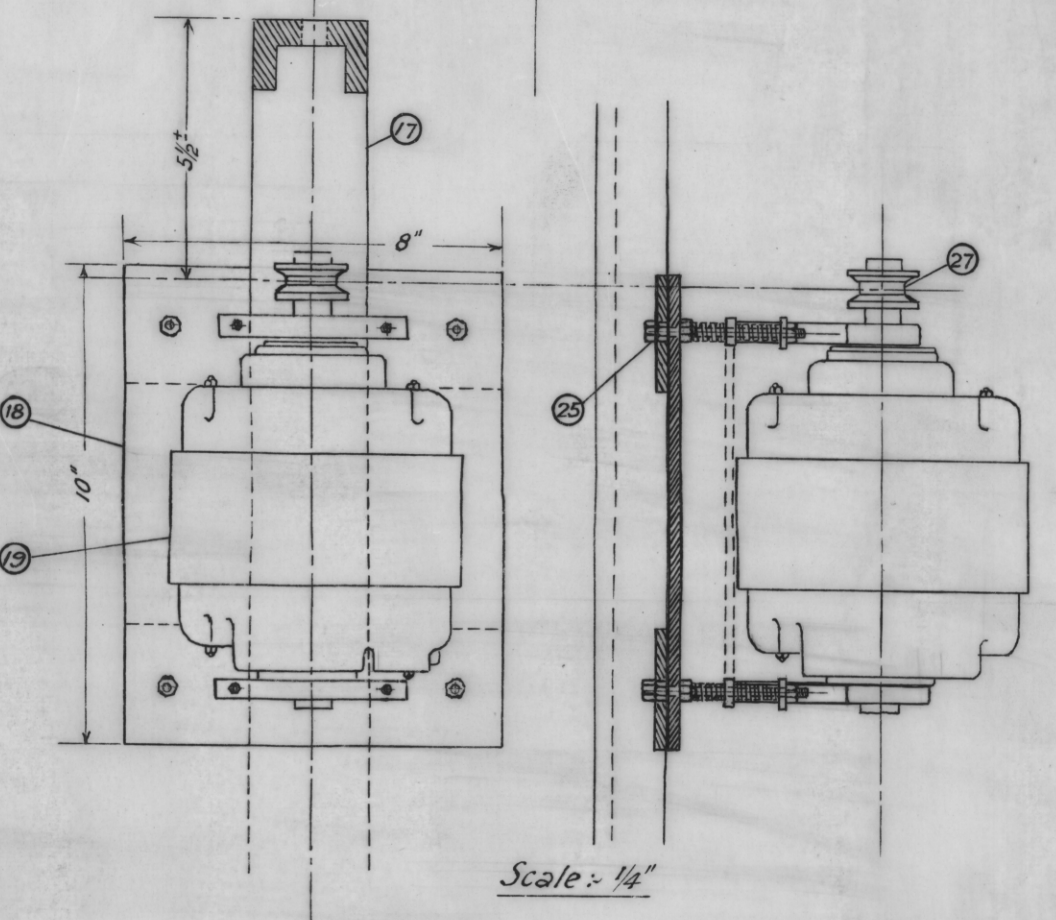
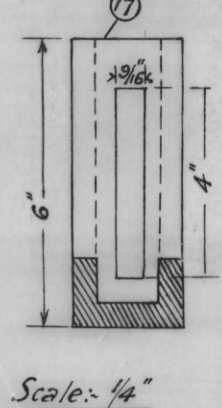
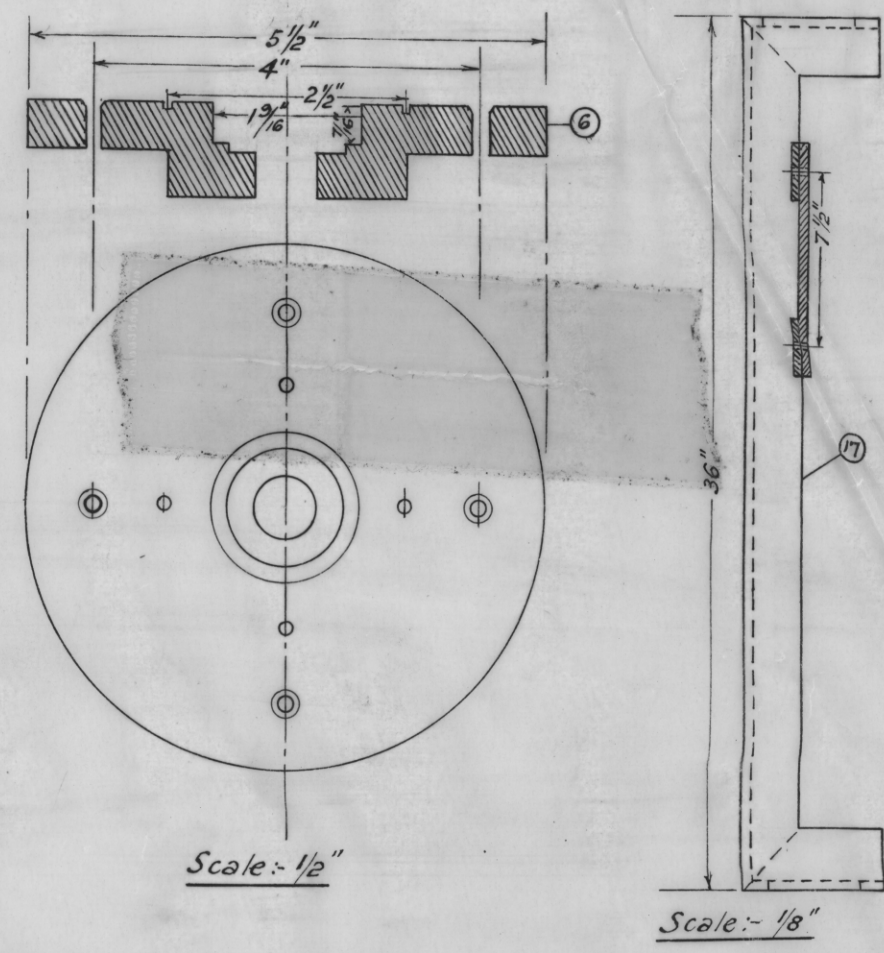
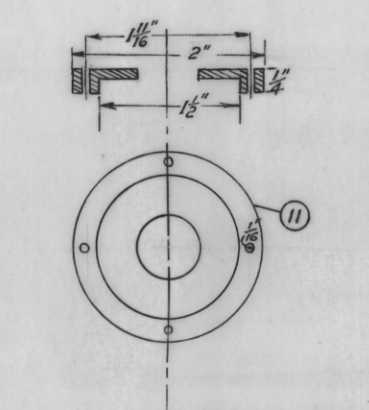
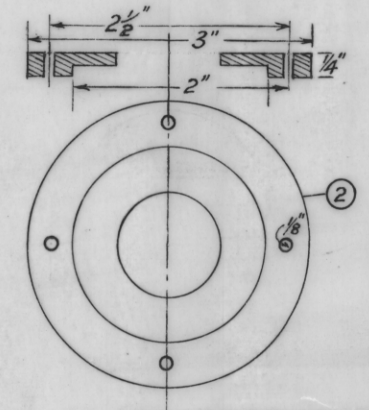
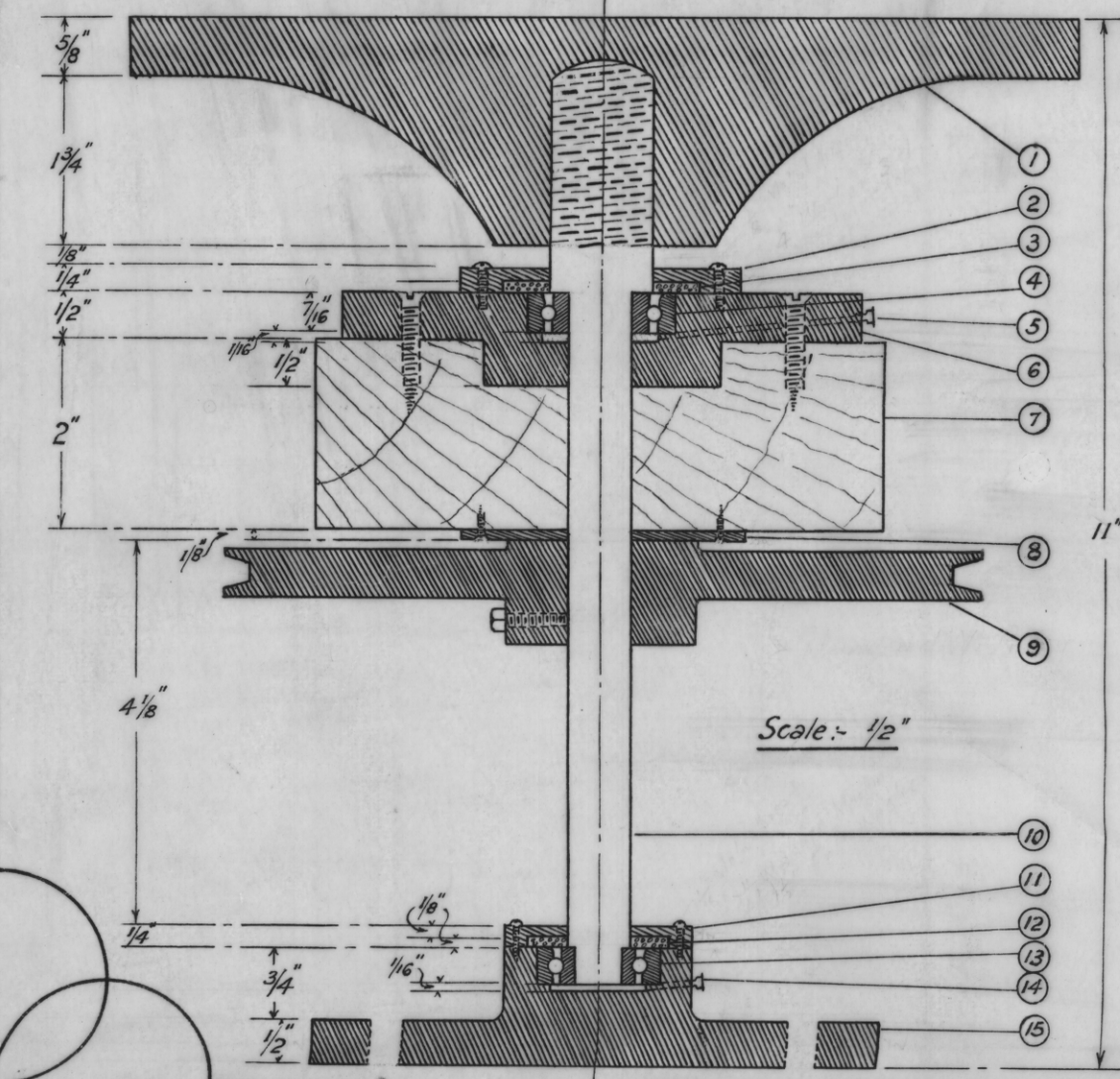
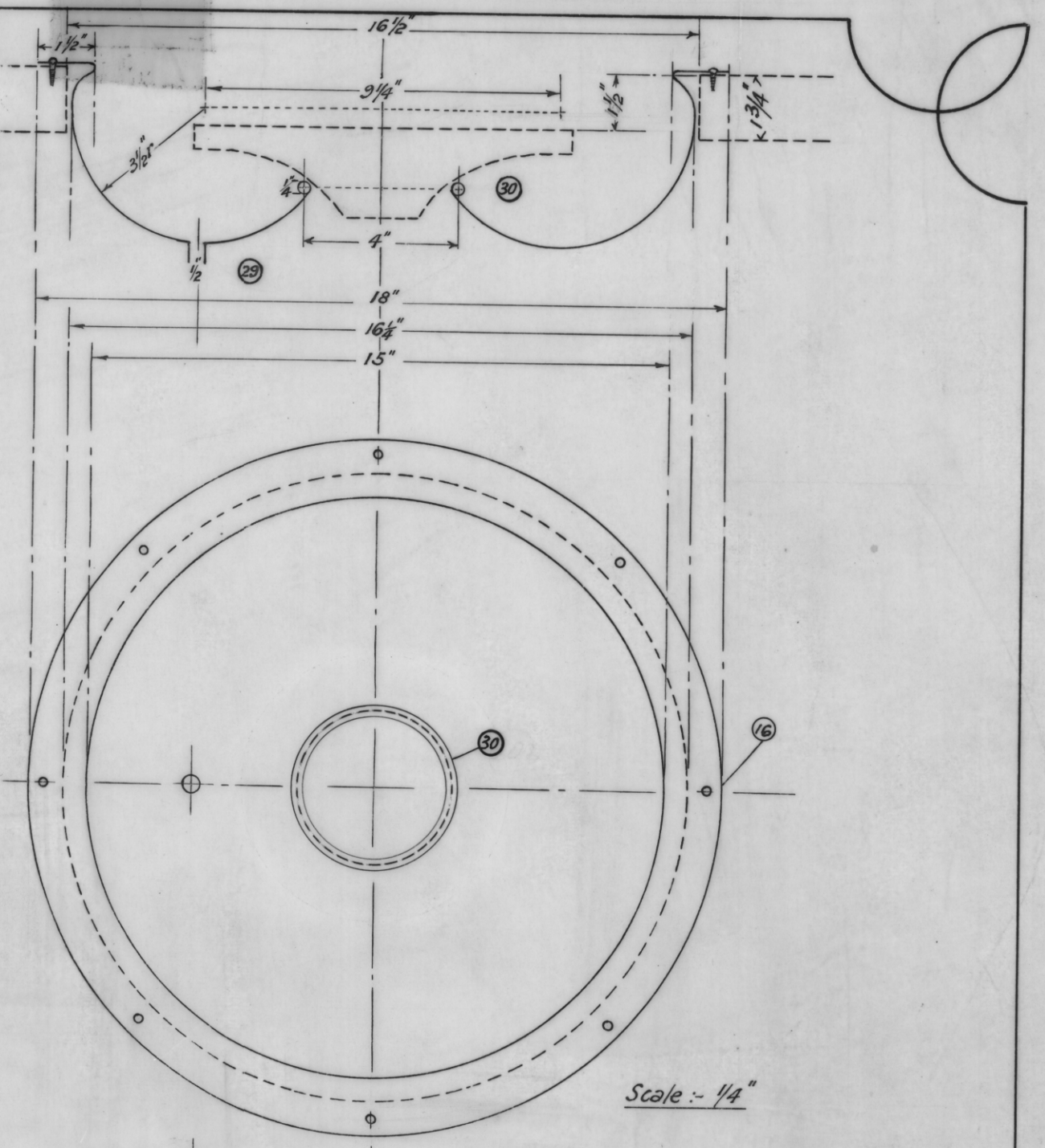
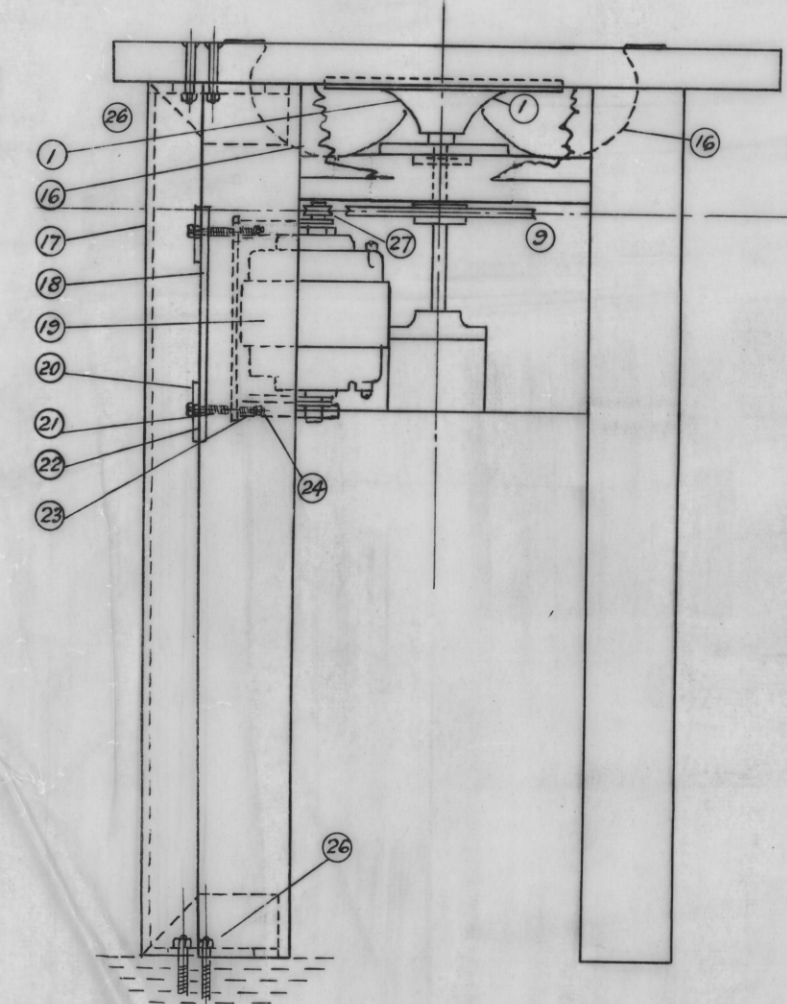
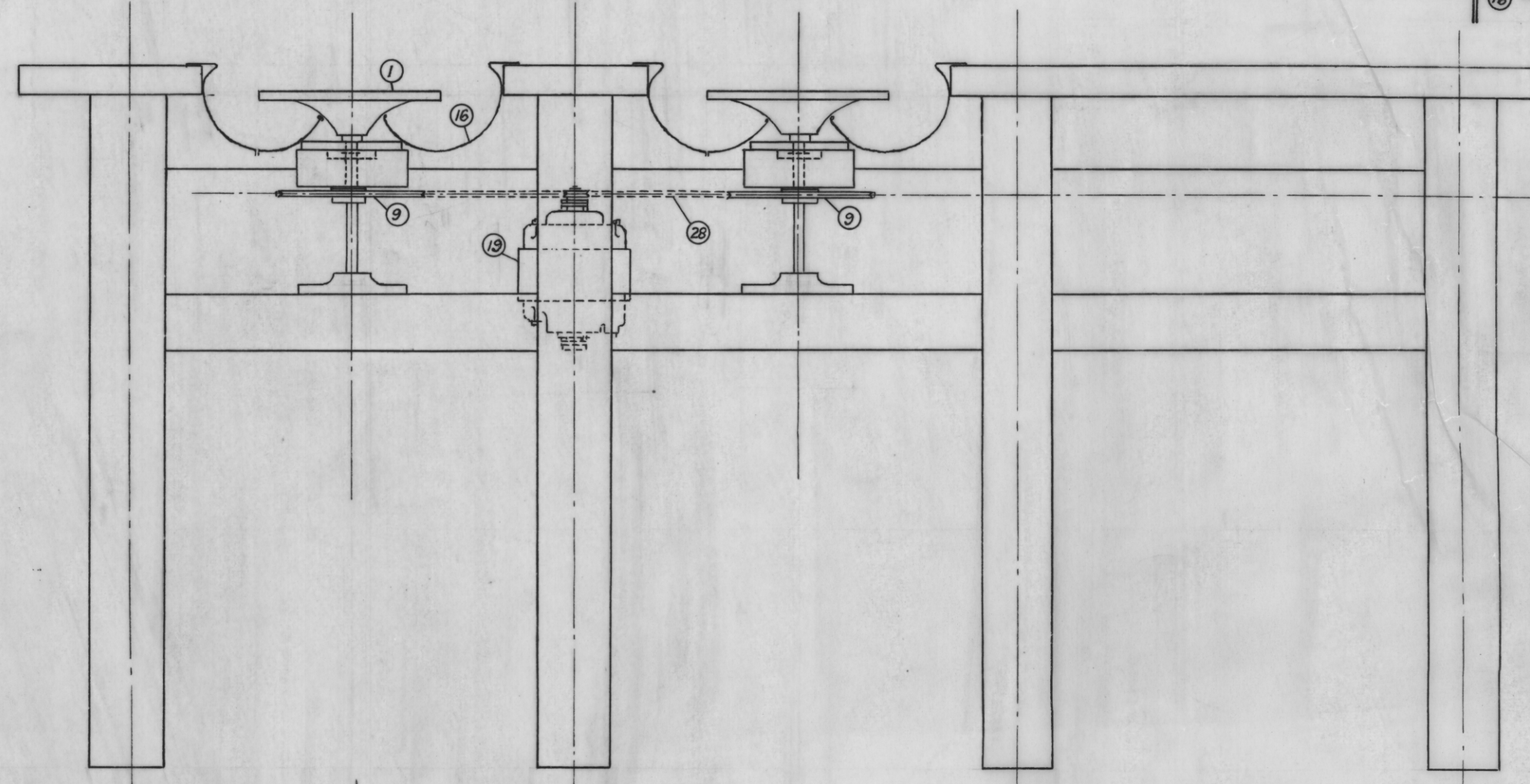


# POWERED LAP MACHINE FOR PREPARING MICROSCOPIC SLIDE SECTIONS

Scale - General Assembly  $\frac{1}{8}$ " Size  
Detail  $\frac{1}{2}$ " and  $\frac{1}{4}$ " Size

Note:- Bench, Laps, Spindles and bearing mountings may be used where possible, essential alterations to present machine are detailed in this drawing

Part	Size	No	Part	Size	No
30	Copper Rod sweated to bottom of Basin	2	15	Bearing Mounting 6" x 4" To be altered	2
29	Copper Pipe sweated in $\frac{1}{2}$ "	2	14	Grease Cap To feed $\frac{1}{16}$ " hole	2
28	(V) Belt Driving both Spindles	1	13	Ball Race (Hoffman) L.S. AC $\frac{1}{16}$ " D $\frac{3}{16}$ " W $\frac{3}{16}$ "	2
27	Drive (V) Pulley D $1\frac{1}{2}$ " Std	1	12	Felt Washer D $1\frac{1}{2}$ " W $\frac{1}{16}$ "	2
26	Bolts holding Chnl. Ir. to floor bench $\frac{1}{2}$ "	4	11	Recess Washer D 2" W $\frac{1}{4}$ "	2
25	Bolts holding $\frac{1}{4}$ " Plate to welded Chnl	4	10	Spindle To be altered to size (Made up)	2
24	Bolts holding down Motor suitable	4	9	Standard V Pulley D 8"	2
23	Strong tension Spring to carry Motor	4	8	Metal Thrust washer D 3" W $\frac{1}{16}$ "	2
22	Motor Base Standard	1	7	Wooden Base bolted to Bench	2
21	Strong tension spring to hold Motor	4	6	Bearing Mounting D $5\frac{1}{2}$ " W 1" Machined	2
20	Plate welded to Chnl. Ir. 8" x $2\frac{1}{2}$ " x $\frac{1}{4}$ "	2	5	Grease Cap To feed $\frac{1}{16}$ " hole	2
19	Motor special Rod & Don. Thrust $\frac{1}{4}$ hp	1	4	Ball Race (Hoffman) L.S. TAC $\frac{5}{16}$ " D $\frac{9}{16}$ " W $\frac{1}{16}$ "	2
18	Iron Plate 10" x 8" x $\frac{1}{4}$ " Detailed	2	3	Felt Washer D 2" W $\frac{1}{16}$ "	2
17	Channel Iron Mtg. to permit Belt Adjust	1	2	Recess Washer D 3" W $\frac{1}{4}$ "	2
16	Copper Basin D 18" $\frac{1}{16}$ " G. Detailed	2	1	Bronze Lap D 10" (Made Up)	2



DEPARTMENT OF MINES, TASMANIA.		
MODIFICATIONS DESIGNED FOR THE MORE EFFICIENT OPERATION OF MACHINE NOW IN USE		
DESIGN BY	<i>Frank Roche</i>	DRAUGHTSMAN
PLAN BY	" " "	" " "
APPROVED		DIRECTOR OF MINES
PLAN NO.	9-914	DATE 26-1-45.

914/M