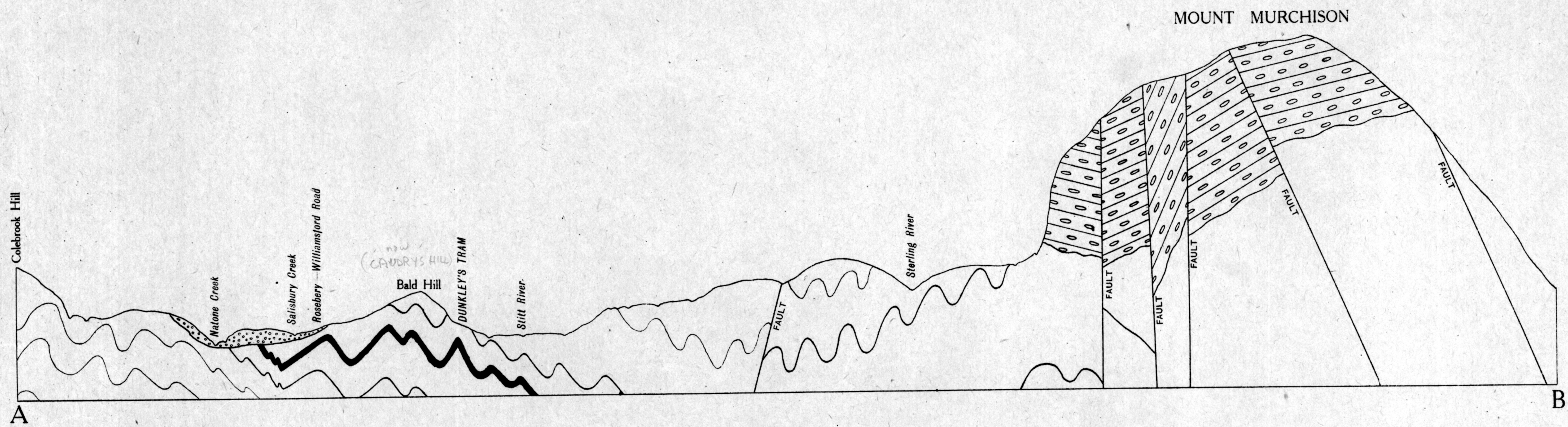


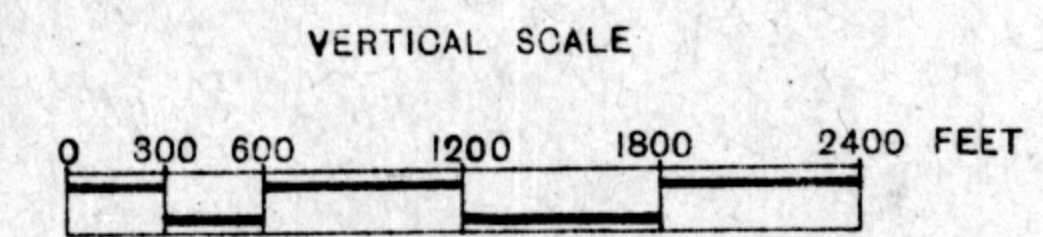
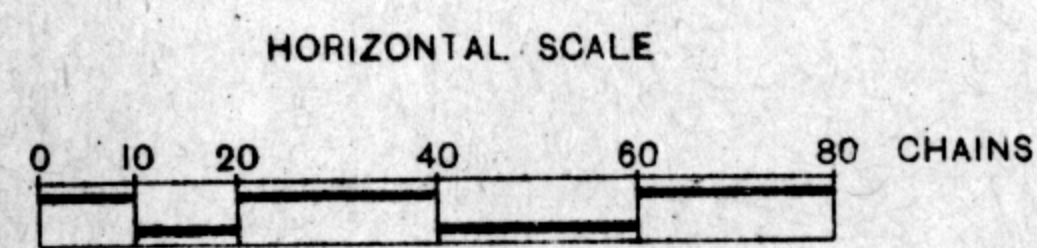
5 cm

SKETCH GEOLOGICAL SECTION ACROSS THE ROSEBERY MINING FIELD ON THE LINE AB.



LEGEND

- Glacio-fluviatile Deposits
- West Coast Range Conglomerate
- Felsite (Keratophyre) and Chloritic Schists
- Read Rosebery Schists
- Dundas Slates and Breccias
- Ore-bearing Horizon



John Hills M.Sc.  
 Assistant Government Geologist  
 30<sup>th</sup> August 1915