

FIG. 1

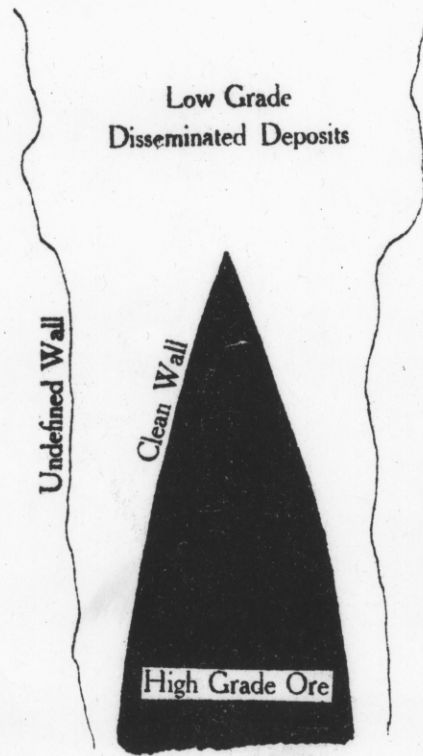


FIG. 2

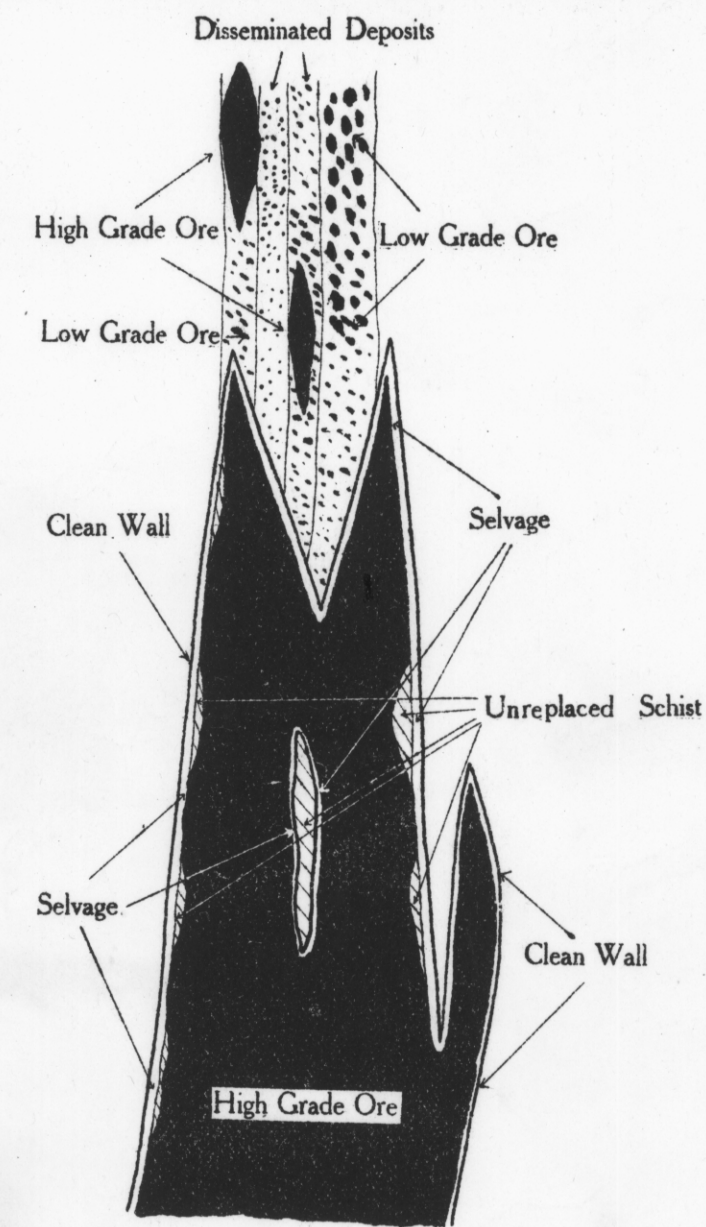


FIG. 3

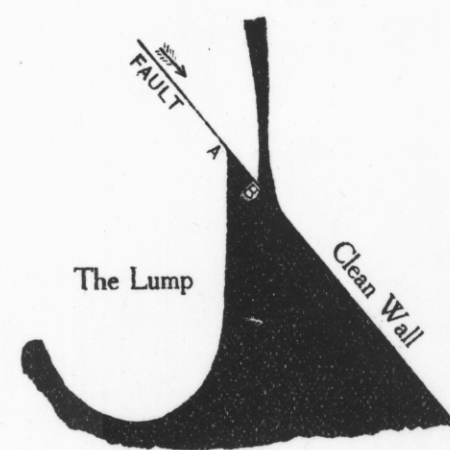


FIG. 4

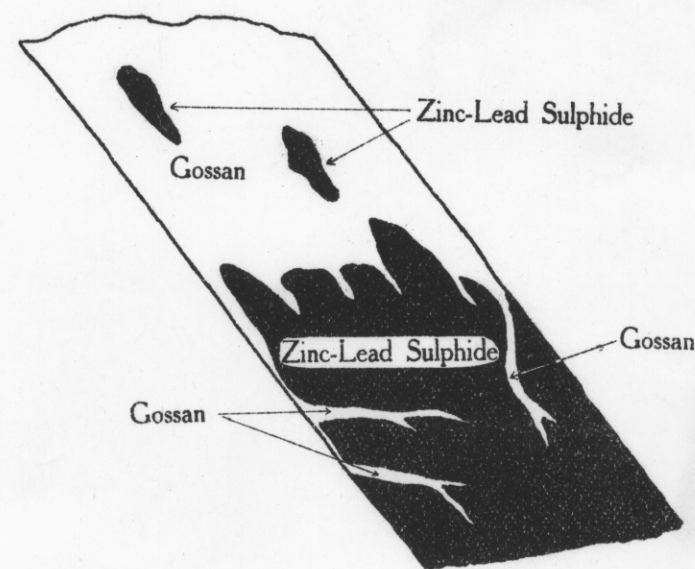


FIG. 5

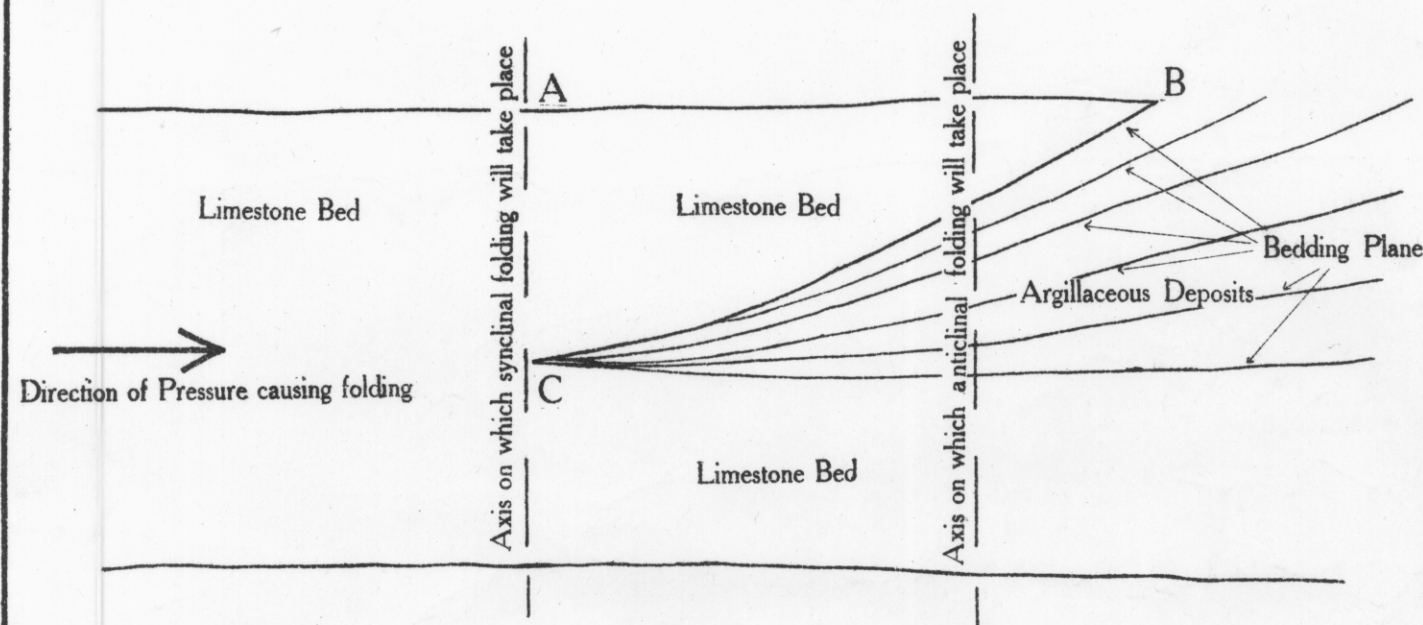


FIG. 6A

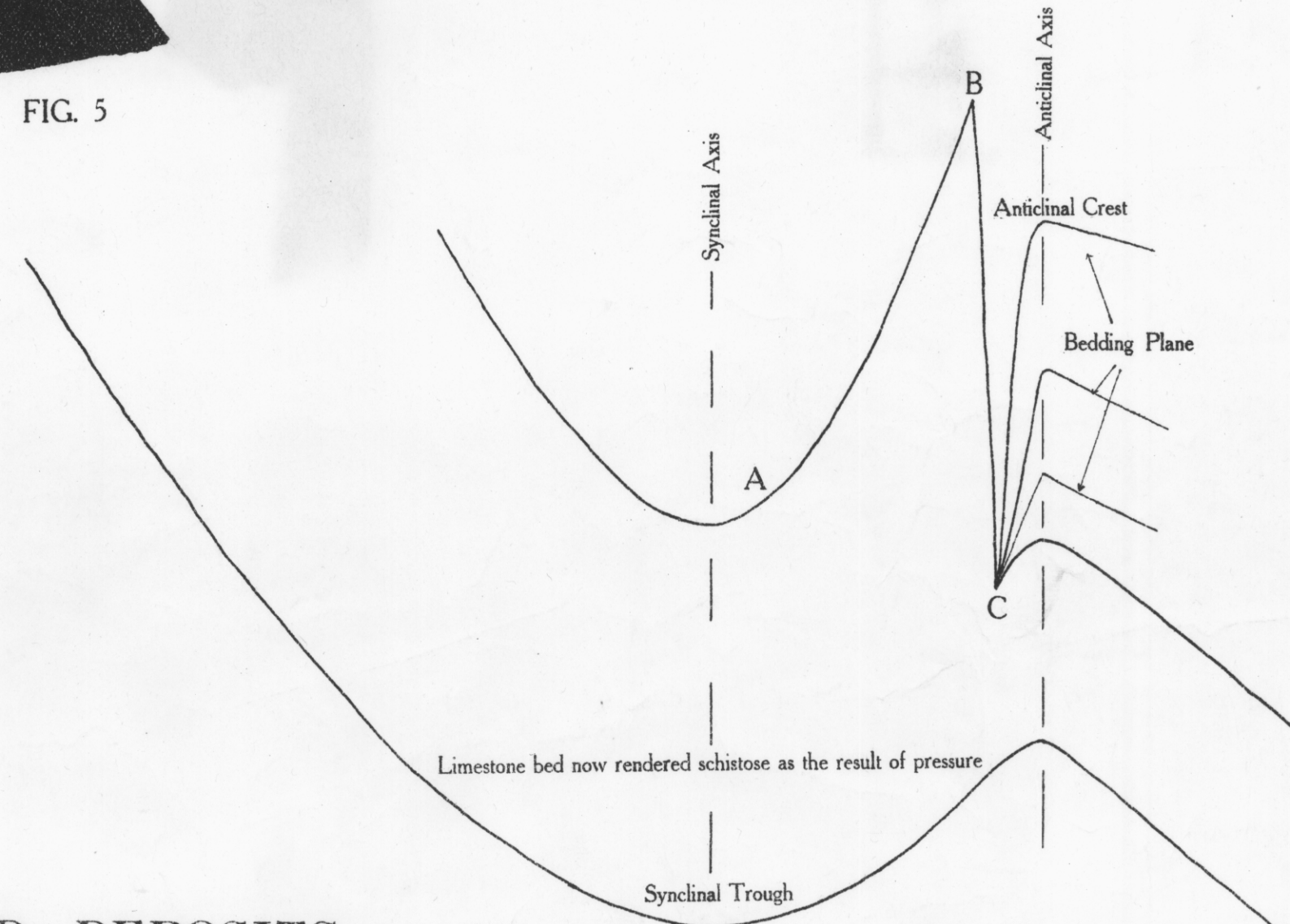


FIG. 6B

DIAGRAMMATIC SECTIONS OF ZINC-LEAD DEPOSITS.

SHOWING STRUCTURAL FEATURES.

5 cm

91M

13

Lofna Stills M.Sc.  
Assistant Government Geologist  
30 Nov. 1944

Photo Allographed by John Hill Government Printer, Hobart, Tasmania.

15/W/51