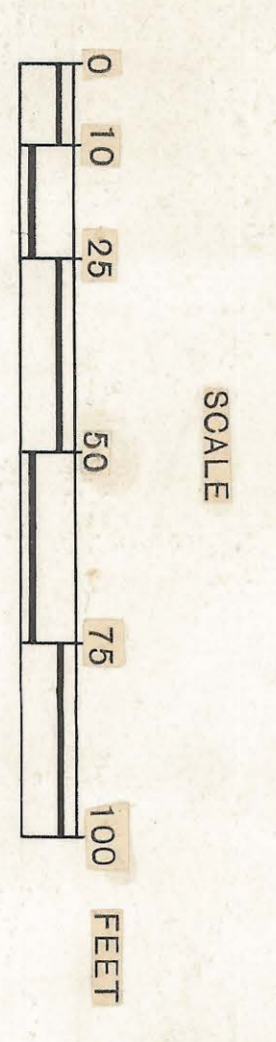
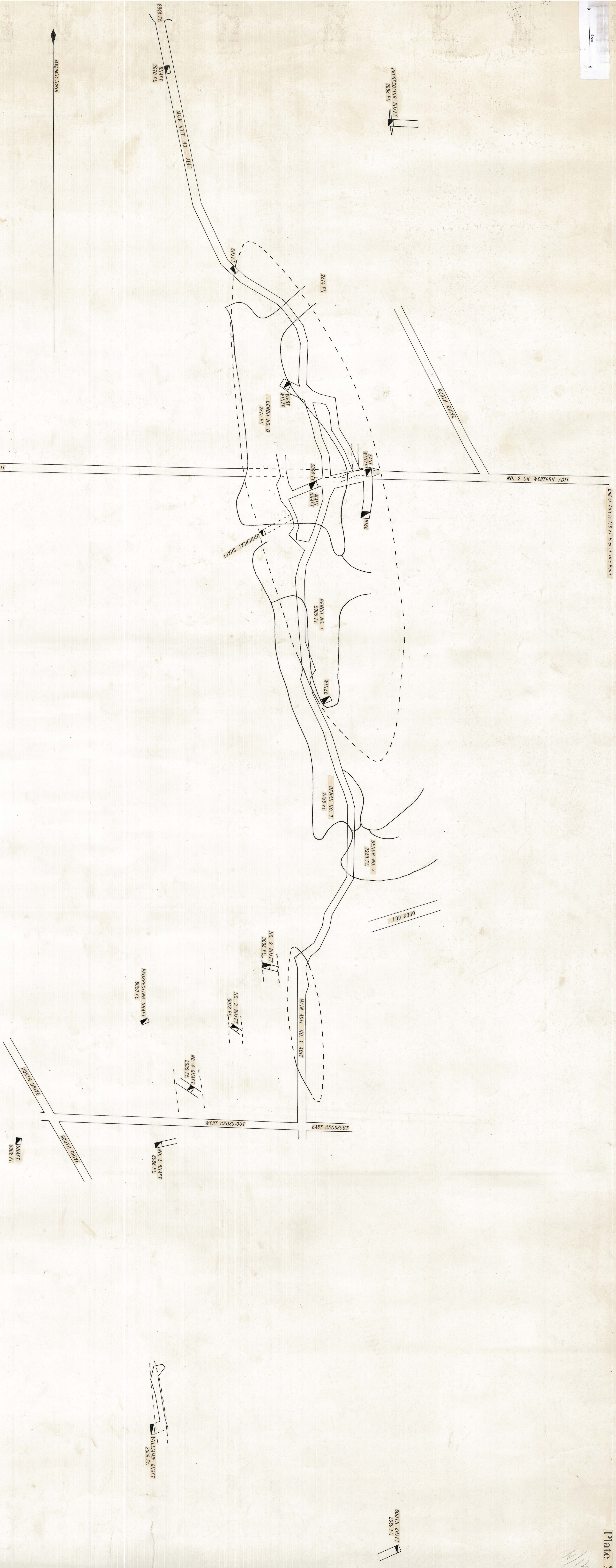
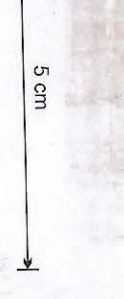


11/19

End of Adit is 278 Ft. East of this Point.



# GENERAL PLAN OF THE MOUNT READ MINE.

## Legend

- Benchmarks or Open-cuts ————
- Main Adit Level ————
- Intermediate Level ————
- Western Adit Level ————
- Walls of Ore-bodies actually visible ————
- Walls of Ore-bodies assumed ————

91N/51

Revised by E. (over 1914)