

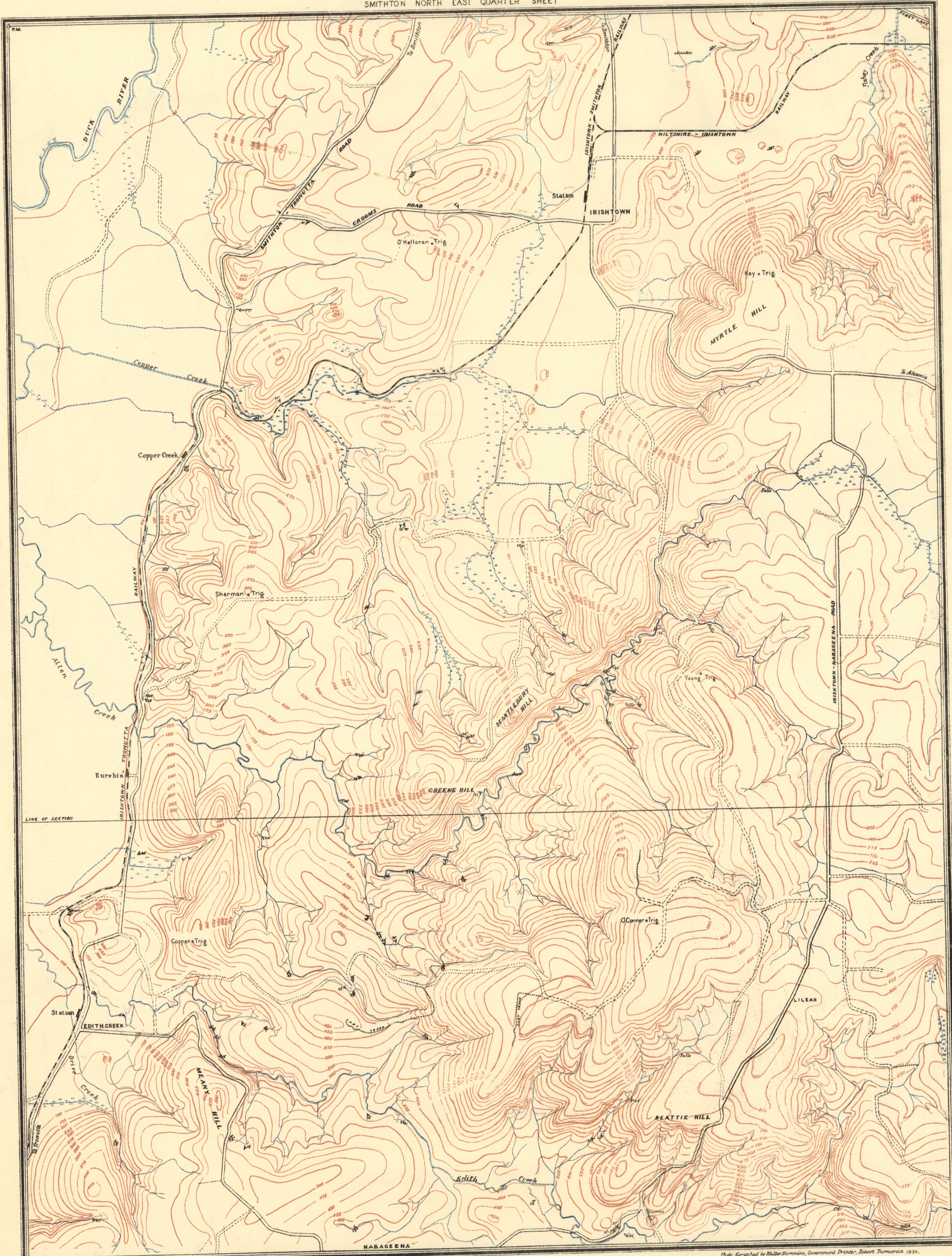
5 cm

958-21

SMITHTON S E QUARTER SHEET

SMITHTON NORTH EAST QUARTER SHEET

DEPARTMENT OF MINES
GEOLOGICAL SURVEY OF TASMANIA



EXPLANATION of Geological Signs and Colours

QUATERNARY PLATEAUCENE RECENT	Alluvium etc.	
	Marine Sands, gravels etc.	
TERTIARY	Sandstone, clays, lignites, conglomerates, grits, etc.	
PALAEOZOIC CARBONIFEROUS PERMIAN	Dolerite stage	
	Slates, breccias & limestone stage	
	Cherts, slates etc. substage	
	Dolerite substage	
IGNEOUS DEVONIAN TERTIARY	Basalt	
	Dolerite	
	Strike and dip	

LEGEND

First class Roads shown	
Metalled do do	
Unmetalled do do	
Triangulation & Permanent Marks shown	



Leveling, Triangulation and Theodolite survey by R.M. Barrison. District Surveyor.
Topography and Geology by F. Blake and N. Finlayson B.Sc. Field Geologist.
Surveyed on 100,000 scale.
Drafting by F. Blake

Scale One Inch to 20 Chains

Contour Interval - 25 Feet
Public Works Division - Maps and Land Robert

Photo Engraved by Muller & Co., Government Printer, Hobart, Tasmania, 1926.